





*Park Pride staff and interns explore Delano Line Park.*

# Acknowledgements

*This vision plan would not have been possible without the concerted effort of a devoted group of people with a deep love of their community.*

*We thank you from the bottom of our hearts,  
-Andrew White, Director of Park Visioning  
-Nick Voravong, Park Designer, Park Visioning*

## Special Thanks to:

### Steering Committee Members

- Denise Carter
- Caitlin King
- Joe Leonhardt
- Vivian Moore
- Jon Reese
- Miriam Van Dyke
- Matt Weilbacher

### Dekalb County Representatives

- Nicole Messiah  
*District 3 Commissioner*
- Dr. LaDena Bolton  
*District 7 Super Commissioner*
- Isaac White  
*District 3 Constituent Services Manager*

### Dekalb County Recreation, Parks, and Cultural Affairs

- Caleb Wittenmyer  
*Greenspace Manager*

### 2024 Summer Interns

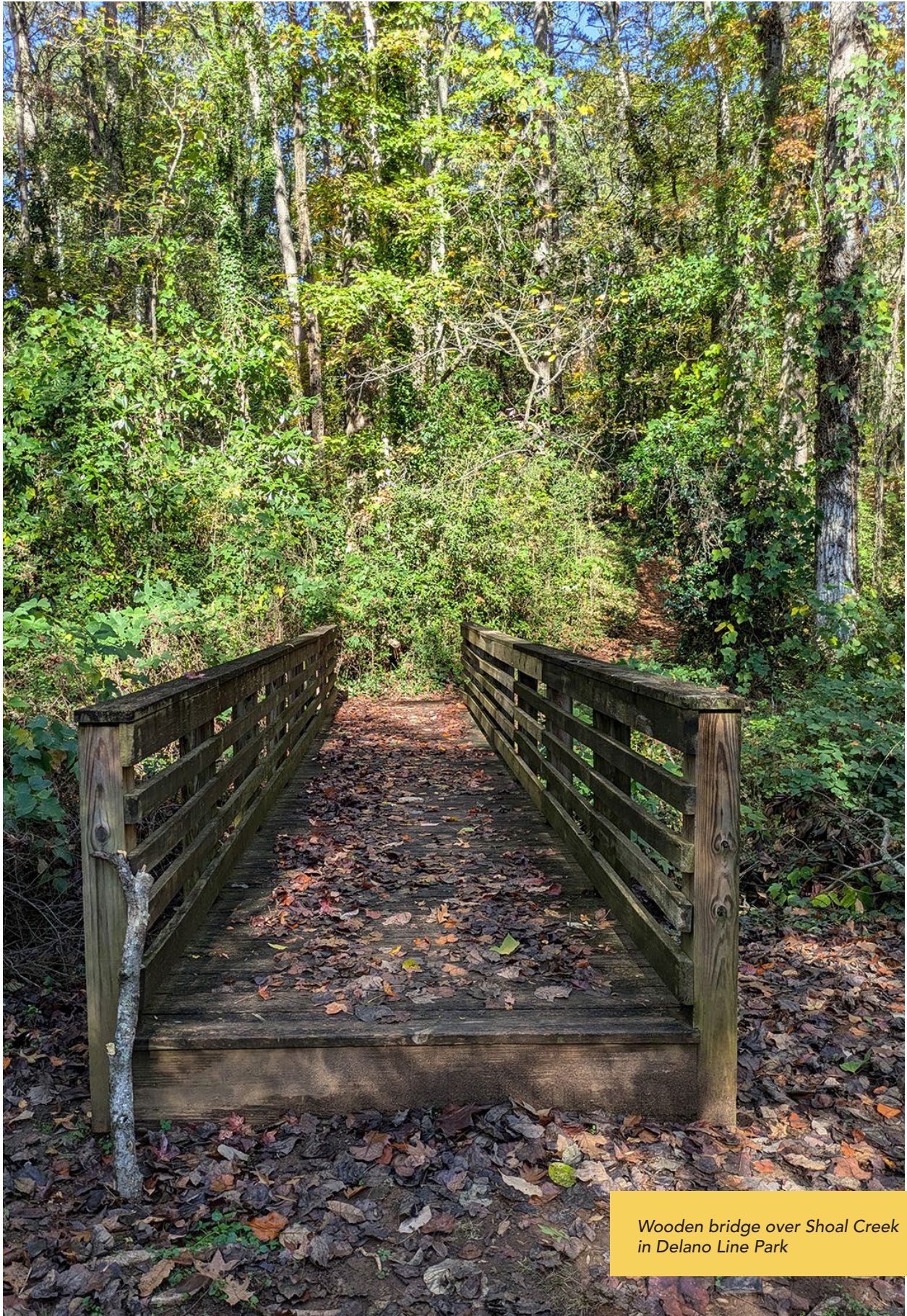
- Lauren Anderson Pirkle
- Mary Flatt
- Joyah Mitchell

### Other Park Pride Staff

- Lauren King Lambert  
*Dekalb Community Services Associate*

### Scott Candler Library Staff

### Jenni's Ice Cream



Wooden bridge over Shoal Creek  
in Delano Line Park

Contents

Acknowledgements	i
Executive Summary	2
Context & History	8
Existing Conditions	16
Community Engagement	22
Preliminary Plans	52 - 59
Vision Plan	60 - 69
Projects & Budget	70
Appendices	76



Existing park sign for Delano Line Park at the corner of Alston Dr and Dusty Ln.



Bordered by White Oak Drive and Line Street the interior of White Oak Park, can provide an opportunity to connect with nature.

# Executive Summary

In the **winter of 2024**, members of the White Oak Hills neighborhood applied for and were awarded a Park Pride Visioning grant to create a vision plan for the White Oak Hills neighborhood parks of Delano Line and White Oak. The visioning process began in August 2024 and completed in April 2025. A Steering Committee of six community members led the effort, which was facilitated by Park Pride. The process followed the key steps below.

## 1. Ask the Community

The visioning team studied the existing conditions of the park and its context via a **site analysis**, a review of historical records, and past master plans.

An online **survey** was used to document the community's needs and desires for the park. Paper versions of the survey were mailed to households within a half-mile of the park.

To provide a central location for information, community input, announcements, survey results, and the public review of concepts and plans, Park Pride designed a **website** to support the park visioning process.

After each meeting, ideas and/or plans were displayed on the visioning website for a **public comment** period. This period is typically 4-6 weeks.

## 2. Establish Guiding Principles

The first public meeting was held on November 16, 2024 at Scott Candler Library. Participants engaged in live electronic polling questions to establish their primary concerns and goals for the park. Based on this feedback, plus data collected through the survey, the Steering Committee established **Guiding Principles** for the future of the parks.

**Park Name:** Delano Line Park

**Acreage:** 19 acres

**Address:** 2536 Dusty Ln

**Parcel numbers:** 15 183 24 050, 15 183 21 019, & 15 183 21 019

**Park Name:** White Oak Park

**Acreage:** 8.57 acres

**Address:** 1650 Line Street

**Parcel numbers:** 15 184 01 107, 15 184 01 045, 15 184 01 099, & 15 184 19 027

**Property Owner:** DeKalb County,  
Department of Recreation, Parks and  
Cultural Affairs

**Commissioner:** Nicole Messiah

**Super Commissioner:** Dr. LaDena Bolton

## 3. Review and Feedback of Draft Concepts

The second public meeting was held on February 26, 2025. There, two preliminary **design concepts** were offered for review and comment. A survey with a physical and online version was used to encourage participation and collect feedback.

## 4. Agree on a Final Vision Plan

Based on survey feedback and poll results, the preferred elements from each preliminary concept were incorporated into a **final plan**. This plan was then cross-checked with the Guiding Principles and reviewed by the community via a third public meeting held in person on at Delano Line Park April 9, 2025. This plan was also published on the website and distributed electronically to the community.

This document will be archived at the Atlanta History Center.

## Vision Plan Cost Estimates

*\*Costs are based on 2025 pricing for guidance only. More detail can be found in the Projects and Budget chapter. All projects subject to approval by DeKalb County Department of Recreation, Parks & Cultural Affairs. Individual project line items and contingencies can be viewed in the Projects and Budget chapter.*

Delano Line Park	Est. cost
Trails and Pedestrian Bridge	\$1,583,700
Parking, Traffic Calming, and Access Control	\$485,800
New and Upgraded Amenities	\$960,930
Nature and Landscape Enhancements	\$104,000
Signage, Wayfinding, and Trailheads	\$203,500
<b>TOTAL</b>	<b>\$3,337,930</b>
White Oak Park	Est. cost
Trails and Traffic Safety Upgrades	\$953,400
<b>GRAND TOTAL</b>	<b>\$4,291,330</b>

## Guiding Principles

1. Provide a safe, inclusive, and accessible space for respite in nature, environmental stewardship, and neighborhood connection.
2. Establish park identity through highly visible park entrances and a variety of trails with clear signage and trail markings.
3. Promote maintenance practices and neighborhood involvement that preserve natural ecosystems, control invasive plants and protect park infrastructure and amenities.

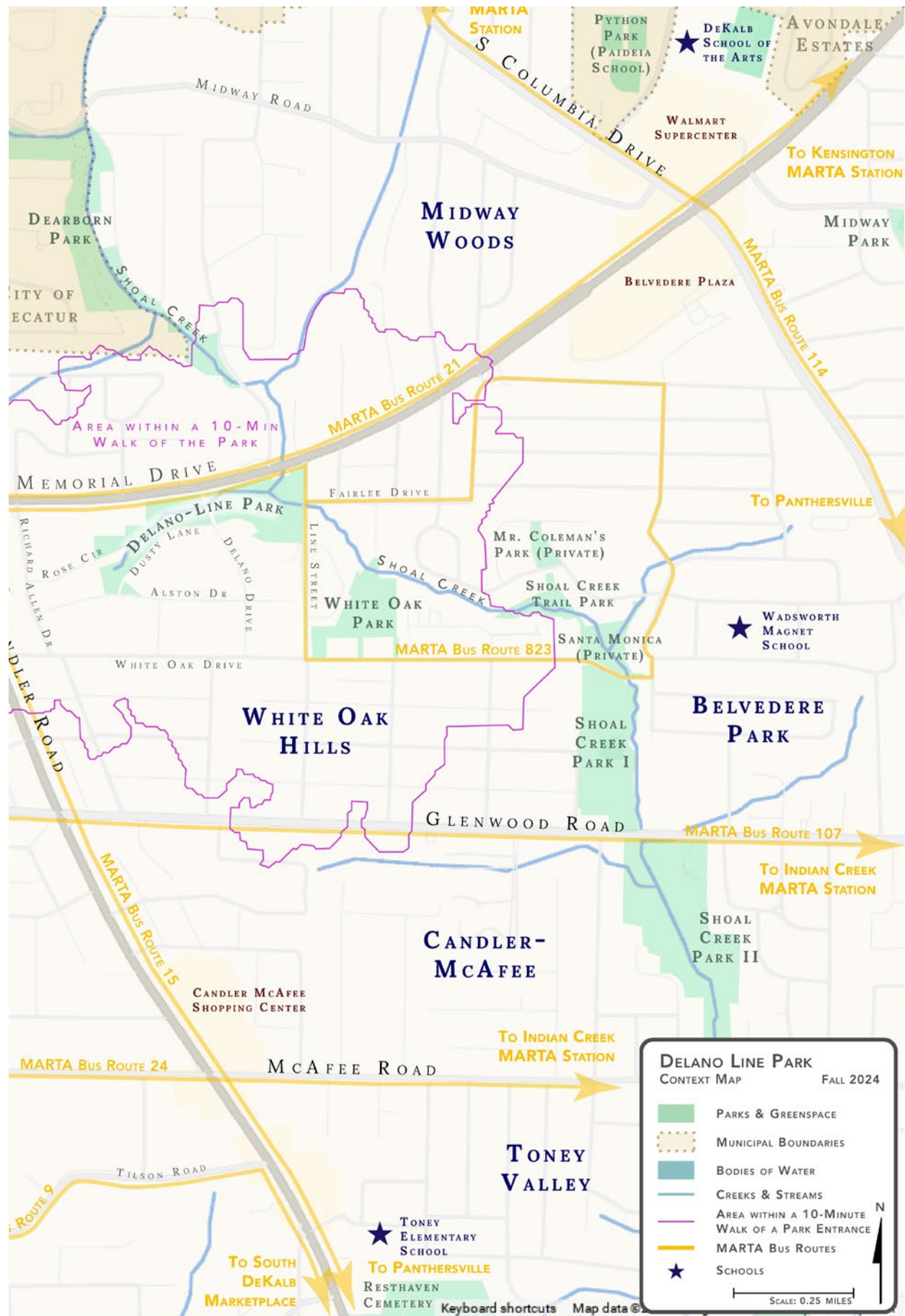








White Oak Park



## Context & History

### Context

Delano Line Park and White Oak Park are found within the White Oak Hills Neighborhood located in unincorporated Dekalb County. The two spaces provide different experiences for visitors.

Delano Line is the larger of the two spaces, covering 19 acres. However, the park is divided into two non-continuous parcels by Delano Drive, separating it into an eastern section of 10.27 acres and a western section of 8.64 acres. It is bordered by Memorial Drive to the north, Alston Drive and Dusty Lane to the south, and Line Street to the east. Memorial Drive is a major arterial road with heavy traffic, while the surrounding streets are quieter, serving primarily as local neighborhood routes. Twenty single-family homes and two apartment complexes are located adjacent to the park, with many more residences just a short walk away.

White Oak Park encompasses 8.57 acres of primarily forested greenspace and is located at the intersection of Line Street and White Oak Drive. An additional piece of the park is on the other side of Shoal Creek, adjacent to Melanie Court. Although the park does not have a designated formal entrance, it can be accessed from White Oak Drive. Residents

of the nearby White Oak at East Lake townhouses also have convenient access to the park.

Marta bus routes 221 and 823 provides that goes by the two parks. Some stops on bus route 15 are within a 10-minute walk to Delano Line Park. The 10-minute walkshed is a key metric in determining a park's accessibility. As 10 minutes or approximately half a mile is the average distance an able-bodied person will walk to get to a destination.

Listed on the next page are some of the parks a short drive away from the White Oak Neighborhood Parks.



MARTA stop along Memorial Drive.

Nearby Parks	Miles Away	Features
Shoal Creek I	1.0	Basketball Court (1) Baseball Fields (4) Pavilions Playground
Dearborn Park	1.5	Hiking Trails Basketball Court (1) Pavilion Playground
Shoal Creek II	1.7	Basketball Courts (2) Tennis Courts (4) Playground Pavilions Walking Trail Restroom
John Evans Legacy Park	2.2	Basketball Court (1) Playground Pavilion Hiking Trail
Barker Bryant Memorial Park	2.4	Fishing Walking Path



The playground at John Evans Legacy Park



## History

While a comprehensive history of the neighborhood falls outside the scope of this vision plan, a brief overview is provided to illustrate how the land has transformed over time.

Before Hernando de Soto's 1550 expedition through the southeastern region of North America, Indigenous peoples had established complex societies here over thousands of years. Archaeological evidence indicates human presence in the area as far back as 10,000 BCE.

As European colonization advanced, groups of Muscogee-speaking peoples formed a loose confederacy to facilitate diplomacy and joint defense. For generations, the Muscogee (Creek) people inhabited what is now Atlanta, along with expansive territories stretching south and east of the Chattahoochee River.

These lands were gradually lost through a series of treaties, culminating in one signed by William McIntosh, a Muscogee leader whose father was a Scottish immigrant. Claiming to represent the entire Muscogee Nation, McIntosh accepted personal compensation in land and money in exchange for ceding Muscogee claims to much of present-day Georgia.

For this betrayal, McIntosh was executed by fellow Muscogee. In 1836, the remaining Muscogee people were forcibly relocated to Oklahoma, as part of the broader forced displacement known as the Trail of Tears.

## Modern Land Uses

Using historical aerials, we can see that the eastern portion of Delano Line Park was once home to an apartment complex. This complex has been around from approximately 1968 –2011.

## Previous Concept Plans

Over the years there have been a few concepts for Delano Line Park. A few of these previous concepts were found in the plan archives at the Dekalb County Parks and Rec office. These plans have trail elements that link amenities together. This approach has also been used in the vision plans shown in upcoming chapters. There are no records of previous concept plans for White Oak Park.

## Preliminary Master Plan

In 2008 the design firm Lose and Associates developed a preliminary master plan. Notable features from this plan are the council circles placed throughout the park with amenities around open lawns placed at the western and eastern most ends. During the development of these plans the multi-family housing on the eastern portion of Delano Line Park were still in use. (Refer to pages 14-15, figures a - c for the Lose preliminary master plan)

## Phase 1 Construction Plans

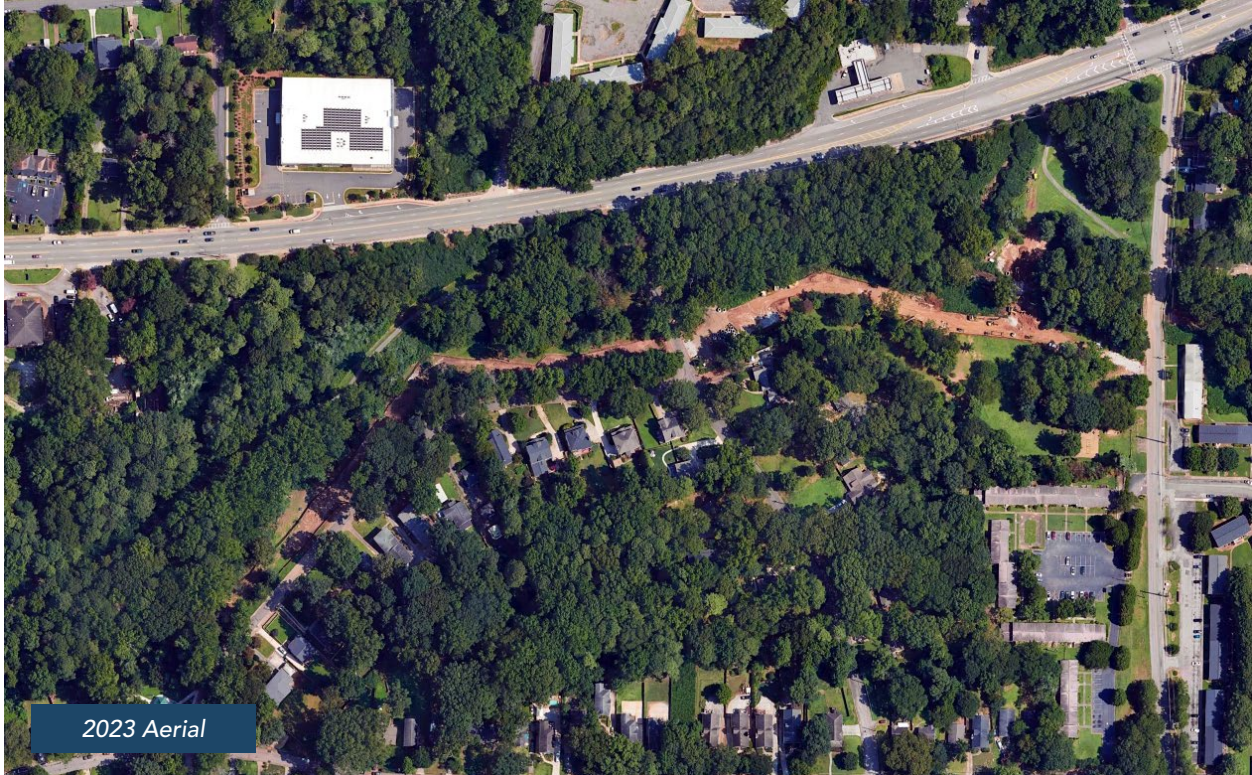
A few years later in 2010 Ecos Environmental Design develop construction plans for the first phase of the master plan implementation. The efforts of this plan can be seen at the intersection of Alston Drive and Dusty Lane when the hexagonal pavilion and surrounding concrete pavement still stands. The second phase was meant to cover the eastern most point of Delano Line Park. Records for that set were not able to be found. Like the preliminary master plan the mixed-use housing was still around at the time the construction documents were drafted.



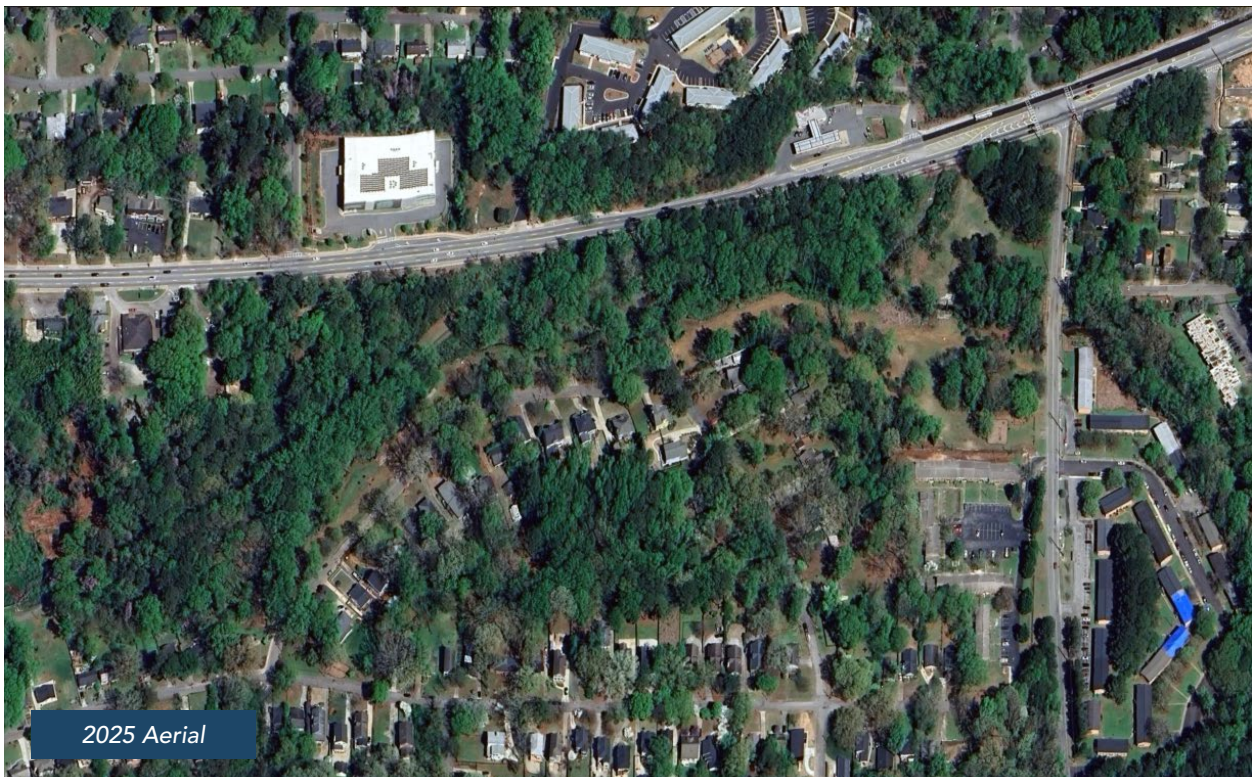
Historical aerial from 1972 shows early version of the apartment complex that was previously in the eastern side of Delano Line Park.



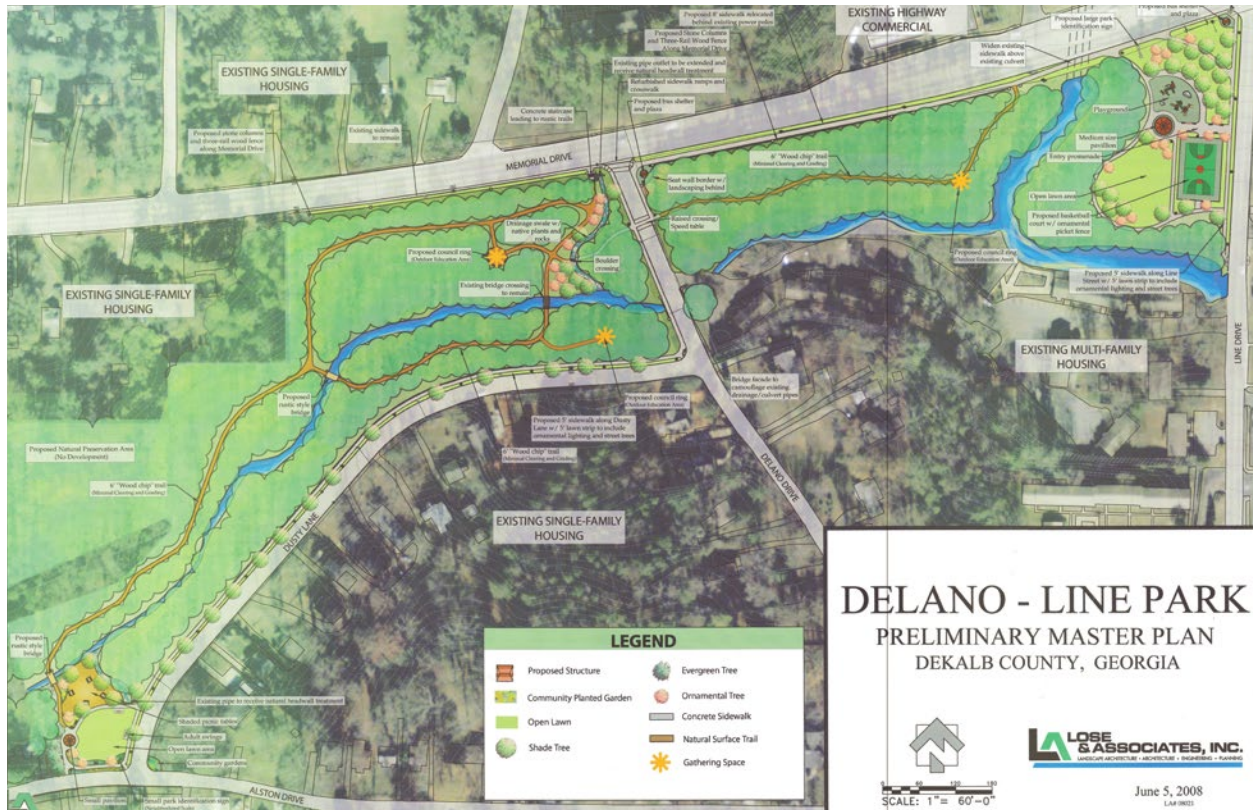
The apartment complex remained in onsite until approximately late 2011.



A sewer and stormwater construction project was undertaken in early 2023 on the same eastern portion as the apartment complex.



The construction project was completed early 2024.



Plan rendering for the Preliminary Master Plan created by Lose & Associates June 5, 2008



### Crossings:

Interaction with water is often rated as the highest user preference within a park. Bridges and engineered waterways should utilize native materials and reflect their setting.



### Streetscape:

Parks do not end at their property lines. Entry features and interactions with surrounding streets and neighborhoods are as important as the elements within the park.



Decorative street lighting and banners identify the park and deter illicit activities.



### Shelters:

Shelters provide park users with valuable shade, create community gathering points, and can become a focal point in a park.



## DELANO - LINE PARK

### PRELIMINARY MASTER PLAN

DEKALB COUNTY, GEORGIA

**LOSE & ASSOCIATES, INC.**  
LANDSCAPE ARCHITECTS

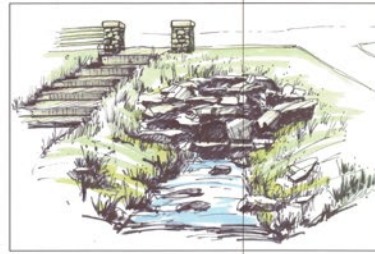
June 5, 2008  
LAP 0001

Inspiration images for the preliminary master plan.

### Outdoor Education:

Children of the digital age have become increasingly alienated from the natural world, with disastrous implications, not only for their physical fitness, but also for their long-term mental and spiritual health.

-Richard Louv



## Natural Drainage Solutions:

Storm water infrastructure is a necessary component of urban environments, but creative solutions can respect natural settings and improve water quality.

## Rustic Trails:

Trails with natural surfaces preserve infiltration rates and complement natural settings.



Council Rings:

Council rings date back to the time of the Native Americans, they are a very American element in the landscape. When a group of people enter, they are equally spread throughout the circle and there is no designated head of the table. These features are traditionally made of stone.

# DELANO - LINE PARK

## PRELIMINARY MASTER PLAN

### DEKALB COUNTY, GEORGIA

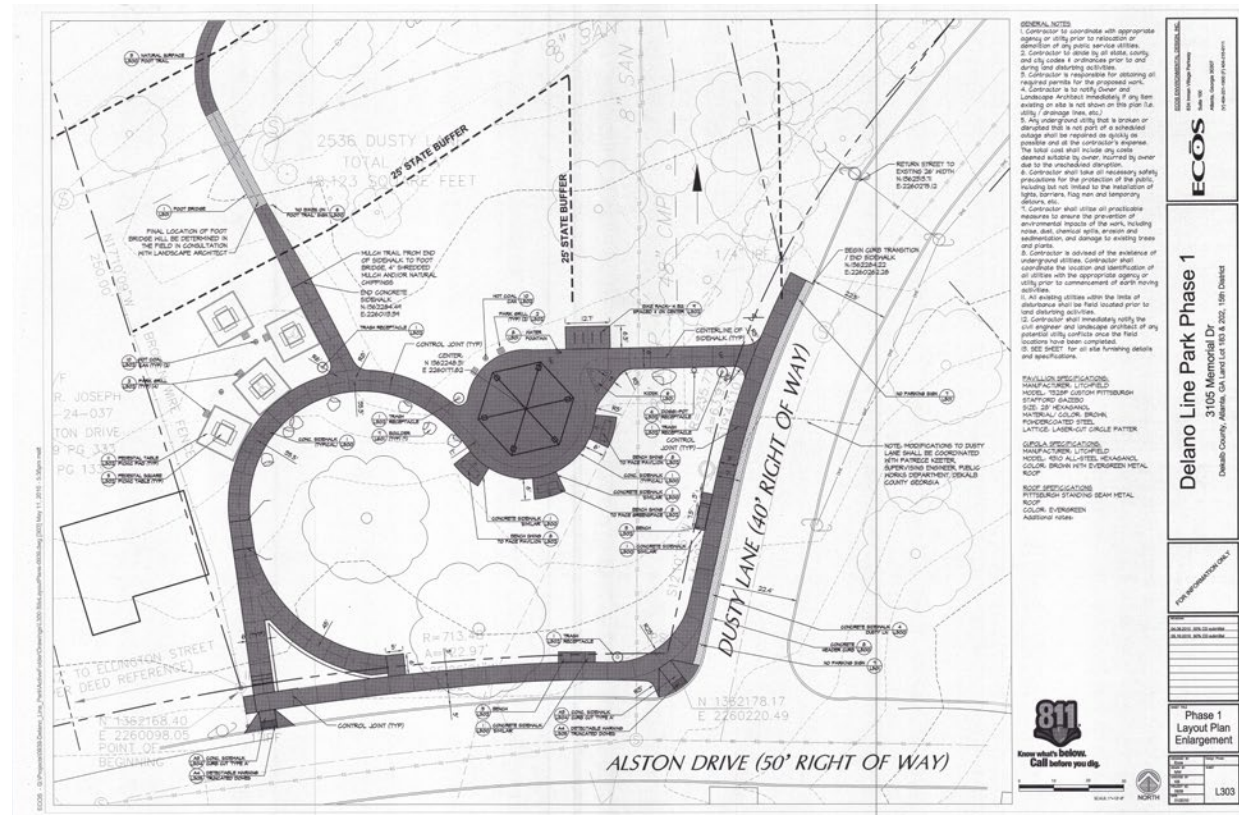


June 5, 2008

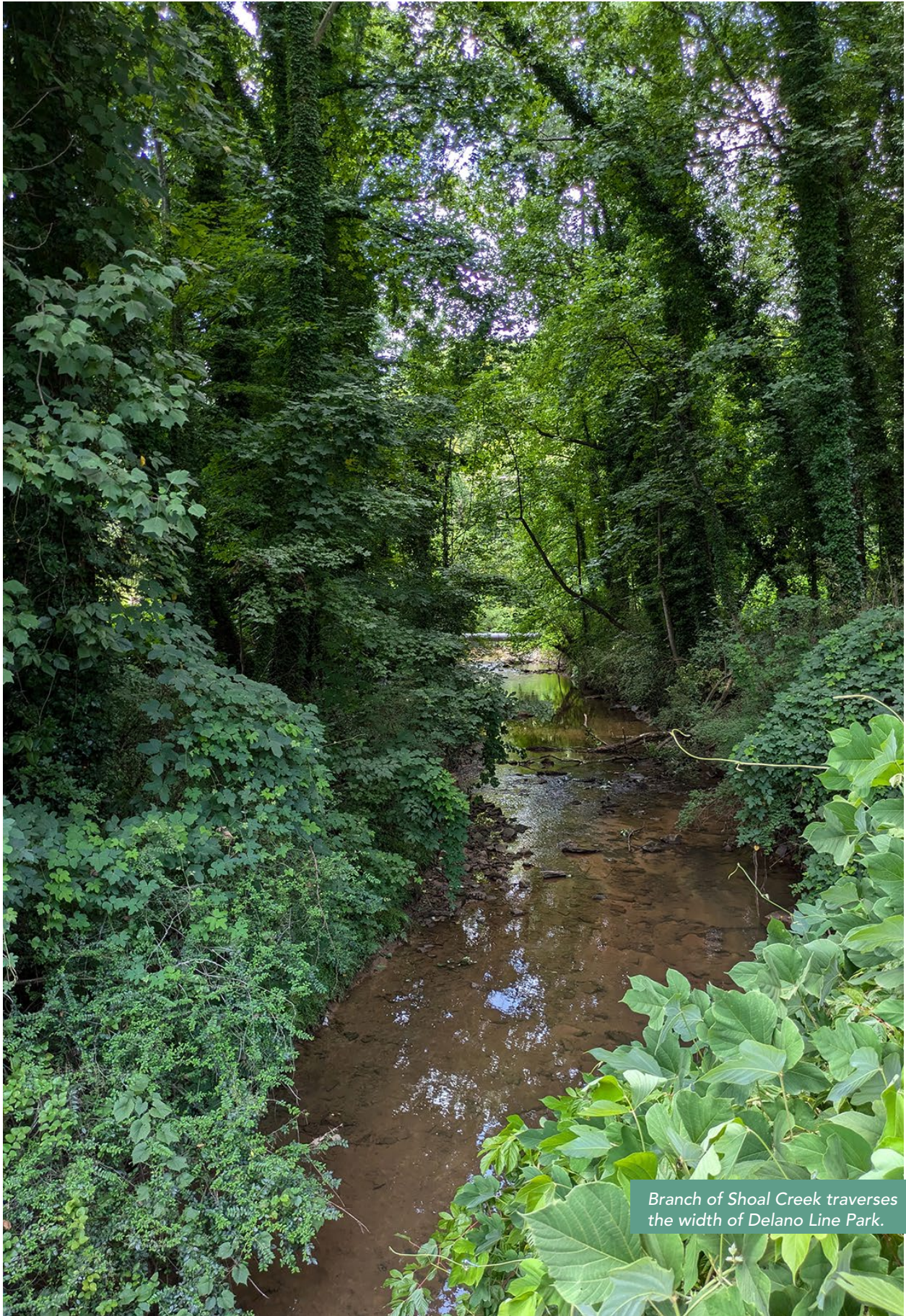


Inspiration images for the preliminary master plan.

## CONTEXT & HISTORY



Construction documents drafted by Ecos Environmental Design for the pavilion and picnic area that still exists today.



Branch of Shoal Creek traverses the width of Delano Line Park.

## Existing Conditions

The two parks that make up the White Oak Hills visioning are just south of Memorial Drive in unincorporated Dekalb County. Both parks provide different experiences with Delano Line having more open spaces and White Oak Park being almost completely covered with a tree canopy. They are both considered to be neighborhood scale parks.

### Delano Line Park

The park is divided into two parts by Delano Drive. 8.64 acres are west of the street while the other 10.27 acres are on the eastern side. This creates two unique experiences for the western and eastern sides of the park. The western side has a long and narrow shape creating more of a linear experience where a typical visitor will travel from one end to the other along either the gravel trail, the grass, or a combination of both. The eastern end has more open lawn space with some flat areas and gentle rolling hills. The

northeastern corner of the park is isolated from the rest of the park. To get there a visitor would have to walk along Line Street or come from Memorial. Shoal Creek cuts off direct access from within the park. Both sides benefit from a strong tree canopy along Memorial Drive. This road being a major traffic route and the trees provide sound dampening for the homes along Alston Drive. Residents on that road have commented on the huge noise difference when the trees have leaves versus when they do not.

### Amenities

Existing amenities are concentrated on the edges of the park. At the intersection of Alston Drive and Dusty Lane is the main gathering space. A pavilion houses a few tables with a grill, trash cans, a water fountain, a bicycle rack, bench swings, and picnic tables placed nearby. From this area



*Collection of amenities around the pavilion at the intersection of Alston Drive and Dusty Lane.*

visitors can go uphill to access the gravel trail via the connector path. This trail is approximately 1,000 feet long and ends with a Shoal Creek stream crossing close to Delano Drive. At the other end of the park near Line Street is a playground around 3,000 square feet in size. Present in the space is a mix of swings, picnic tables, exercise equipment, and smaller things to climb on or ride in. Additional swings are up the hill on Alston Drive across from the pavilion. Currently, off-street parking is not provided. Visitors either park on the street or walk from their residences.

### Hydrology

A branch of Shoal Creek travels through **Delano Line Park** from end to end. The path of the stream also surrounds a portion of the park in the northeast corner. This prevents direct access to that area from within the park. A 75-foot stream buffer associated with the branch is a limiting factor for the areas that can be developed without getting into the variance process. A flood plain is present where the stream branches off. Sewer line upgrades throughout the park have a 20-foot easement associated with them, another limiting factor in where improvements can occur.

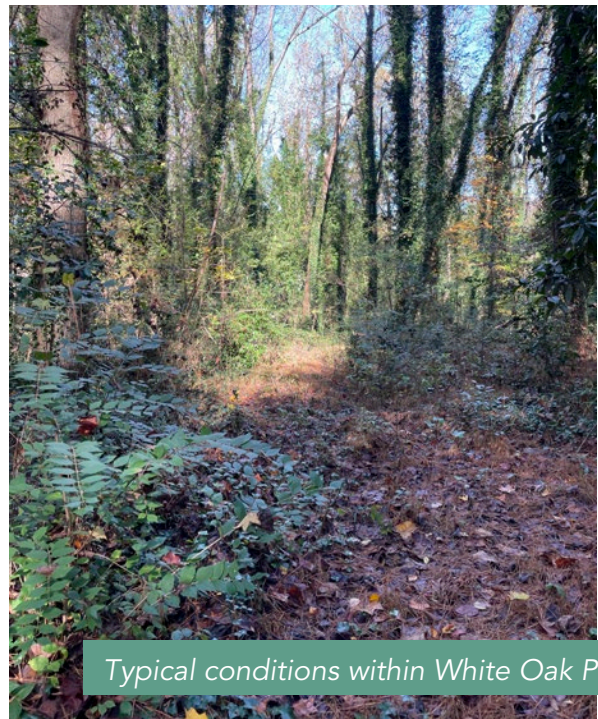


## White Oak Park

Currently, White Oak Park does not have any formal entrances. To access the site, one would have to traverse challenging conditions. This park is predominantly covered in trees. Historical aerial photographs show that the site was once clear cut. So, a lot of the trees that are found within the park are on the younger side of tree succession. Another carryover from the previous development is an old sewer easement that runs through the park towards the northern side. Like Delano Line Park a branch of Shoal Creek runs along the park. The stream cuts off a piece of the park that is at the Melanie Court cul-de-sac. The park is also accessible from the White Oak at East Lake town homes.



*Old sewer easement in White Oak Park*



*Typical conditions within White Oak Park*



Gravel trail from the western portion of **Delano Line Park** and the stream crossing it ends at.



**Delano Line Park** fitness area and play equipment at the playground along Line St.



# Community Engagement

A strong community engagement effort is the foundation of any visioning process. It ensures that any design decisions were rooted in the true desires of the community. The utmost care was taken to ensure that the Vision Plan was an accurate reflection of the community's wants and needs. A wide variety of engagement strategies were used to ensure that as many voices as possible were heard. These ranged from in-person meetings, paper and digital surveys, and a website that shared engagement opportunities and published documents and information related to the process. For the purposes of this neighborhood park, outreach was limited to residents within 1/2 mile, or a 10-minute walk, of the park.

## Steering Committee

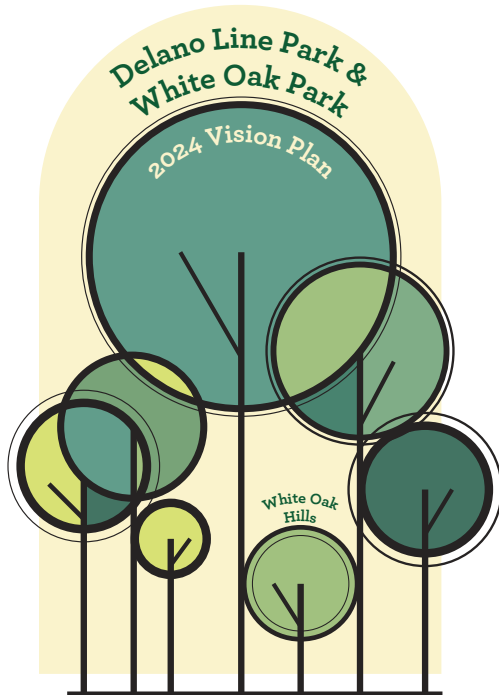
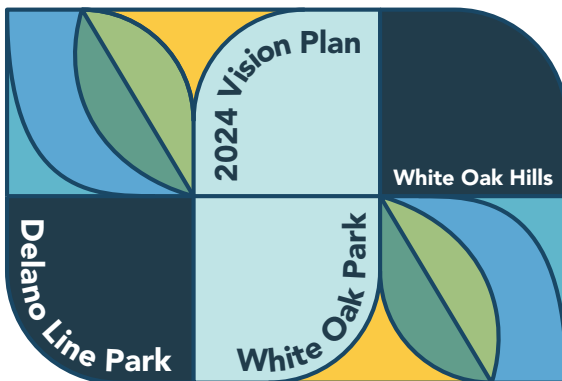
The steering committee assembled for this visioning process included people who have dedicated effort towards the stewardship of the White Oak Hills neighborhood parks of Delano Line and White Oak. The members were self-selected and included Denise Carter, Caitlin King, Joe Leonhardt, Vivian Moore, Jon Reese, Miriam Van Dyke,

and Matt Weilbacher. The committee met monthly from August 2024 to April 2025. This group was the first to see any materials that were presented at public meetings. Their feedback was valuable in ensuring that the Visioning Team's approach to community engagement was useful and relevant.

## Visioning Branding and Website

To clearly identify the public materials and events related to the visioning process, Park Pride created consistent visual branding. Designing a logo was the initial step for branding the visioning process. The branding and color scheme then informed the aesthetics of the website. It hosted progress updates, inventory and analysis information, links to surveys, meeting presentations, and survey results.

To ensure that as many community members were reached as possible yard signs featuring the logo were also developed. These signs were then placed strategically around the neighborhood and park.

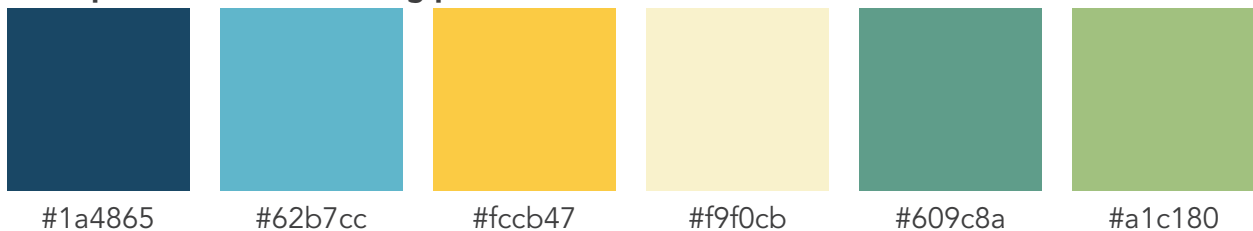


The Initial concepts for the Vision Plan logo played off the extensive canopy that can be found in both parks. At this point each park was referred to separately. Later the name would be combined into "White Oak Hills Neighborhood Parks."



Final version of the logo incorporated the same white oak tree that can be found in the logo for the White Oak Hills Neighborhood Association. The tree was set on a field of green and a stream to represent that natural features of both Delano Line Park and White Oak Park. This logo would go on to be used on any materials that went out during the visioning process, including the website, survey (physical and electronic), concept plans, yard signs, stickers, and more.

#### Color palette for the visioning process





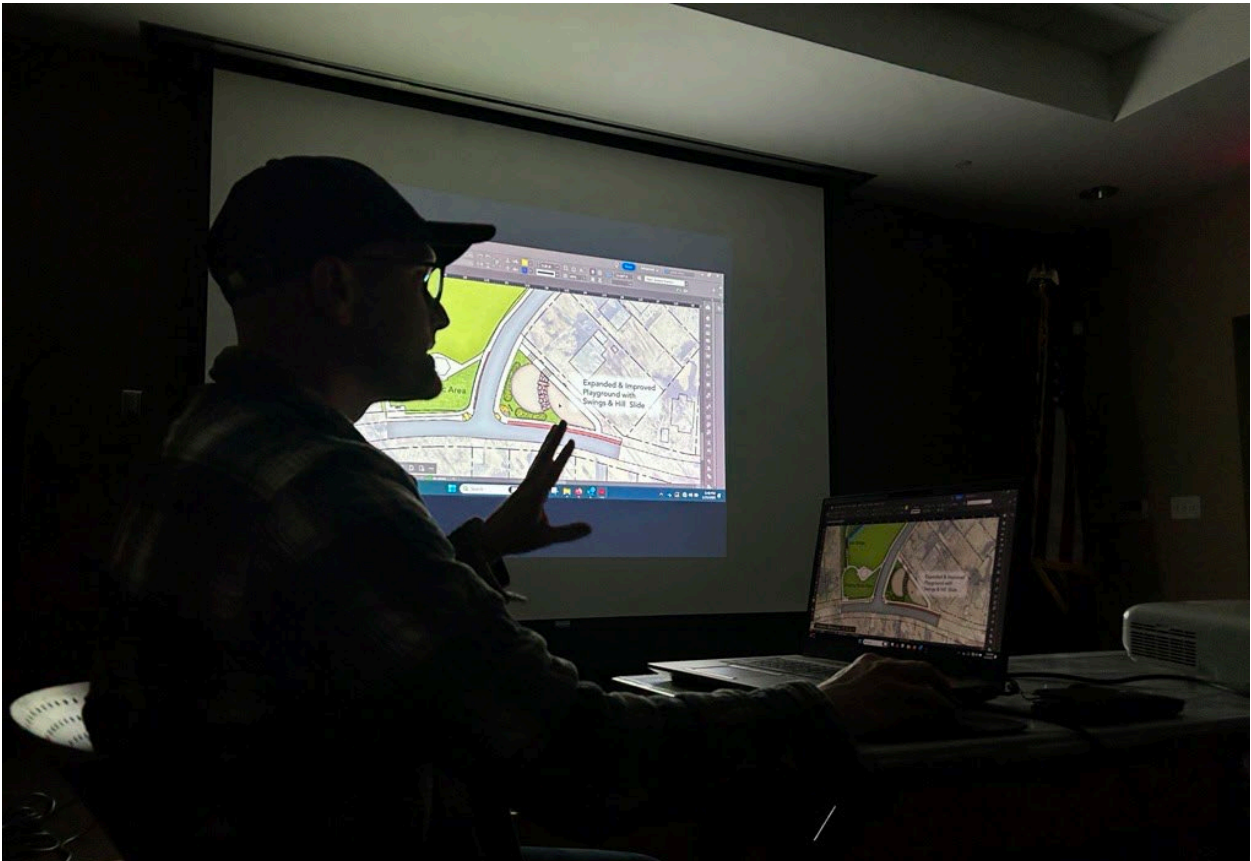
**This Page (Above):** Steering committee members meet for the first time and look over aerials of Delano Line Park.

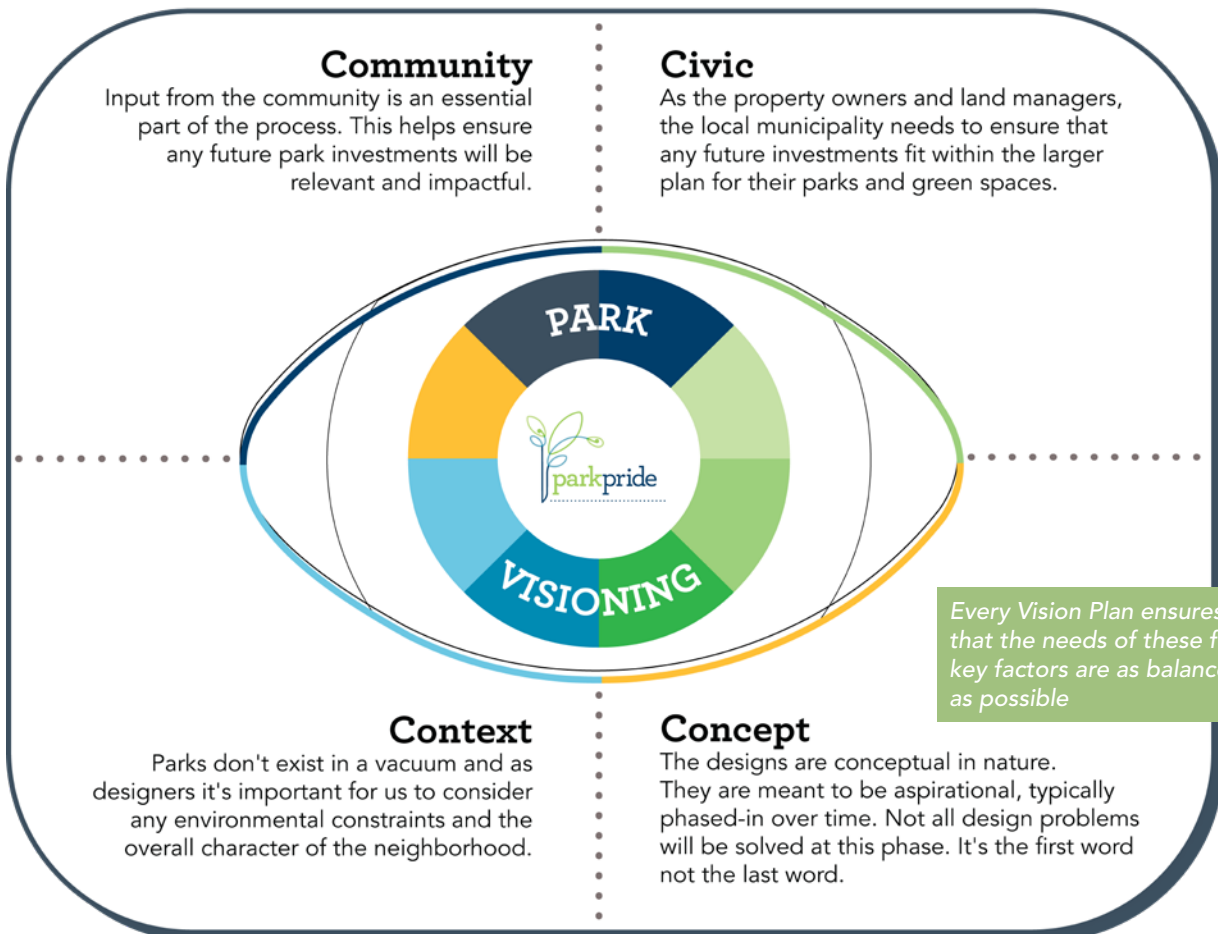
**This Page (Below):** Site visit to White Oak Park during the winter.

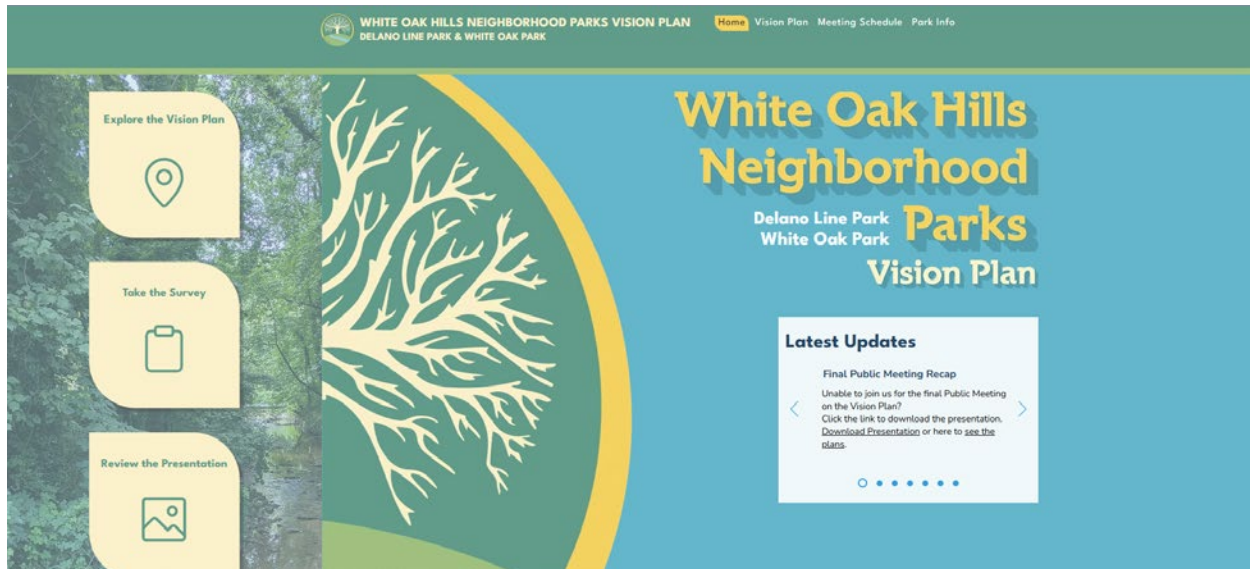


**Next Page (Top Image):** Steering committee members the Park Pride team, and Caleb Wittenmyer (DeKalb County Recreation, Parks, and Cultural Affairs) discuss the Delano Line Park site.

**Next Page (Bottom Image):** Steering committee meeting to review concept plan before they get presented at the second public meeting.







Website for the White Oak Hills Neighborhood Parks Vision Plan was the central location for any information relevant to the project such as concept plans, meeting schedule, and past presentations.

### Community Survey

In partnership with the steering committee community surveys were created to better understand parks users and later for feedback on the concept plans. The surveys were open for around a period of 6-8 weeks. They were available as electronic and physical versions. With the physical version being sent out through the mail with a return envelope to everyone within the outreach area within a half mile from the Delano Line Park. For the electronic versions a QR code was made that linked directly to the website with the survey only a click away. This code could be found on the yard signs and physical surveys. It was also sent out through various networks the neighborhood association had such as a newsletter, slack channel, and Facebook group. All individuals in a household (including children) were encouraged to complete the survey. Data visualization was used to show the results in a way that is easy to understand. Results for each survey can be found in the sections for each public meeting. The full results are available in the appendices at the end of this report.

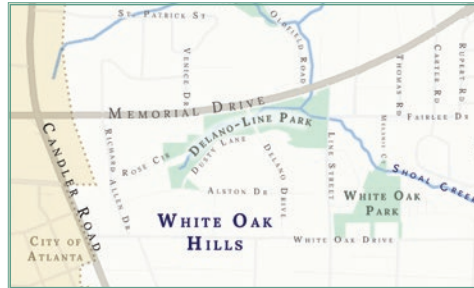
### Public Meetings

The three public meetings serve as major milestones for the Vision Plan process. Each is designed to move the process forward

in stages. All public meetings were held at Scott Candler Library. The first public meeting serves as a brainstorming session where the 'Big Ideas' about the park are established. It also serves as an opportunity for attendees to share their stories about the parks. Participants decide what kind of park they need and want, and what functions are most important for the park to fulfill. Based on the feedback gathered in this meeting plus survey data, a set of guiding principles is created. All future designs and elements must support these principles to be included in the final plan. Using feedback from the meeting and survey data two draft concepts are developed for the park spaces. These concepts are first reviewed by the steering committee, then presented for review at the second public meeting. At this meeting and with a survey after, preferred pieces from both draft concept plans are selected. The preferred components are then combined into a singular concept plan and presented for review at the final public meeting. If possible, the final public meeting will be held in the park receiving the Vision Plan. The community provides feedback on the final conceptual plan as well, which is considered before preparing this report.



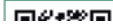
Facilitated By:



## Take part in the Visioning Process!

Return by mail with the included envelope or complete the survey online by scanning the QR Code below

Park Pride is engaged in partnership with DeKalb County



Visit our website or scan the QR code to:

**DeKalb County is considering changing the name of Delano Line Park to better align with community identity. If you have a suggestion for a different park name, kindly share it below.**

Would you like to see Delano Line Park and White Oak Park connected to the county wide multi-use trail system?

☐ Yes

☐ No

What else would you like to share with us about Delano Line Park and/or White Oak Park? Feel free to expand on your previous answers or share something new.

### Delano Line Park Questions

**Delano Line Park** is a 19-acre park that is located on the south side of Memorial Drive from Venice Line Street.

How often do you visit Delano Line Park?

- |  |   |
|--|---|
| <input type="checkbox"/> Often (weekly)                  | <input type="checkbox"/> Frequent                         |
| <input type="checkbox"/> Occasionally (every few months) | <input type="checkbox"/> Seldom (fewer than once a month) |
| <input type="checkbox"/> Rarely (once per year or less)  | <input type="checkbox"/> Don't go                         |

If you have visited, what do you like most about Delano Line Park?


If you haven't visited before or visit infrequently, what would encourage you to visit the park?


### White Oak Park questions

**White Oak Park** is a 9-acre county-owned forest between Line Street, Melanie Court, and White Oak Drive.

Prior to receiving this survey, did you know that White Oak Park is a passive, undeveloped county-owned greenspace?

☐ Yes

☐ No

Would you use nature trails if they were added to White Oak Park?

☐ Yes

☐ No

How might White Oak Park benefit you and/or the community?


How would you feel about White Oak Park being opened for public use?


Who is in your household? (Select all that apply)

- ☐ Adults
- ☐ Infant - 5 years old
- ☐ Children (6-12 years old)
- ☐ Teenagers (13-18 years old)
- ☐ Seniors (65 years and up)
- ☐ Dog owners
- ☐ Persons with mobility challenges

To receive e-mail notifications about the visioning process, provide your name and e-mail address below. Your name will not be published, and all survey responses will be kept anonymous. We do not share your information with third parties without permission.

Please print clearly!

First

Last

Email

☐ I would also like to sign up for the White Oak Hills Neighborhood Association email list.



The White Oak Hills Neighborhood Association is a volunteer group, open to all, that takes an active interest in the stewardship of Delano Line Park and White Oak Park. To stay informed about future volunteer days and current projects consider signing up for the email list.

The goal of the first community survey was to gain a deeper understanding of who used the two White Oak Hills Neighborhood Parks (Delano Line and White Oak) and how they used them. The survey was split into questions relevant to Delano Line and White Oak. A digital version of this survey was also available.

## Concept Feedback

Public Meeting 2 Feb 26th, 2025

The team at Park Pride has developed two draft concepts for the White Oak Hills Neighborhood Parks based on community feedback. We are now asking for your feedback on these drafts, which will guide the vision plan for the park. Preliminary Concepts can be downloaded at <https://parkvisioning.wixsite.com/delano-whiteoak>

**Concept Plans**

Following the presentation of the two draft concepts a survey was released to determine which elements the participants preferred. Like the community survey a digital version was also available to complete. Data gathered from this survey was crucial in developing the final Vision Plan.

### Guiding Principles

How much do you agree with the following goals, or "guiding principles" for the park?

**1** Provide a safe, inclusive, and accessible space for respite in nature, environmental stewardship, and neighborhood connection.

☐ strongly disagree
 ☐ disagree
 ☐ neither agree nor disagree
 ☐ agree
 ☐ strongly agree

**2** Establish park identity through highly visible park entrances and a variety of trails with clear signage and trail markings.

☐ strongly disagree
 ☐ disagree
 ☐ neither agree nor disagree
 ☐ agree
 ☐ strongly agree

**3** Promote maintenance practices and neighborhood involvement that preserve natural ecosystems, control invasive plants, and protect park infrastructure and amenities.

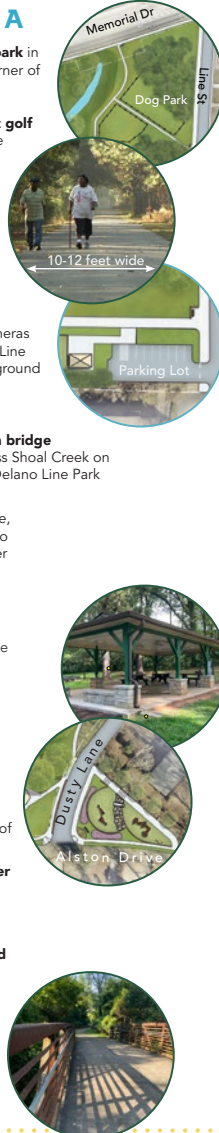
☐ strongly disagree
 ☐ disagree
 ☐ neither agree nor disagree
 ☐ agree
 ☐ strongly agree

### Big Differences

The following are major areas of difference between Concepts A & B. Select the options you prefer. **Features from both concepts can be included in the vision plan.**

#### CONCEPT A

- ☐ Includes a **dog park** in the northeast corner of the park
- ☐ Includes 3-5 **disc golf** holes for practice
- ☐ **Wider paved trail** extends through Delano Line Park
- ☐ **Small off street parking lot** with security cameras proposed along Line Street near playground and pavilion
- ☐ **New pedestrian bridge** connection across Shoal Creek on eastern side of Delano Line Park
- ☐ No short distance, **walking circuit** to complement other paved trails
- ☐ **Covered picnic pavilion** near Line Street
- ☐ **Larger scale playground upgrades** at the corner of Alston Drive and Dusty Lane at the cost of some trees
- ☐ **No Amphitheater**
- ☐ **Off street paved trail** through the park and parallel to Dusty Lane
- ☐ **Bridge over Shoal Creek** to Melanie Court



#### CONCEPT B

- OR
- ☐ **No dog park offered**
  - ☐ **No disc golf offered**
  - ☐ **Narrower paved trail** extends through Delano Line Park.
  - ☐ **No off-street parking lot** offered
  - ☐ **No new pedestrian bridge**
  - ☐ Short distance, **walking circuit** offered along with other paved walking trails
  - ☐ **Uncovered organized picnic areas** near Line Street
  - ☐ **Smaller scale playground upgrades** at the corner of Alston Drive and Dusty Lane with fewer tree impacts
  - ☐ **Amphitheater** built into slope along Dusty Lane
  - ☐ **Sidewalk** along Dusty Lane adjacent to the park
  - ☐ **Boardwalk** over difficult terrain to Line Street



#### The following features Please let us know to what extent!

Unpaved nature trails are proposed in forested area

☐ strongly oppose
 ☐ oppose
 ☐ neither

Asphalt walking trails connect park entrances with neighborhood streets

☐ strongly oppose
 ☐ oppose
 ☐ neither

Updated playground equipment and improved design

☐ strongly oppose
 ☐ oppose
 ☐ neither

Consistent park entrance design to help establish park identity

☐ strongly oppose
 ☐ oppose
 ☐ neither

Safer pedestrian road crossings and traffic calming measures

☐ strongly oppose
 ☐ oppose
 ☐ neither

Invasive plant removal in both parks along with trash removal

☐ strongly oppose
 ☐ oppose
 ☐ neither

Added site furnishings like bike racks, benches, water fountains

☐ strongly oppose
 ☐ oppose
 ☐ neither

Share any additional comments here:

Name \_\_\_\_\_ Email \_\_\_\_\_



## Public Meeting One: Big Ideas

The first public meeting was held on November 20, 2024, at Scott Candler Library. There were around twenty-six attendees. The goal of this meeting was to introduce the visioning process to the community, encourage involvement and participation in the survey, describe the context and history of the site, and establish the guiding principles for the park's design.

### Guiding Principles

Once the visioning process was introduced and all the history and context were presented, the attendees got their chance to share how they felt about the parks. They were asked a series of questions using an interactive polling application called PollEverywhere to prompt qualitative responses from attendees.

They were asked to:


- Describe Delano Line Park Today
- Describe How You Wish Delano Line Park to be Described
- Write a Mission Statement for the Parks

The results of this exercise were used to craft the guiding principles with the steering committee.


### Meeting Activities

The meeting was arranged around the concept of the past, present, and future of the White Oak Hills neighborhood parks. To talk about the past two maps with historical aerials (pgs. 36-37). This gave attendees a quick look at the previous conditions but also allowed legacy residents to share their stories about the park spaces. The three aerials of the existing conditions (as of 2023) were printed and attached to easels. Attendees were encouraged to mark up these plans with any ideas or concerns they had with the parks (pgs. 38-39). The activity for the future was writing a post card to yourself a few years from now. The Visioning Team designed a post card for participants to address their future selves. Some of the responses can be found on pages 40-41. The first survey was opened the same day as the public meeting.

When poll is active respond at [PollEv.com/parkpride703](https://PollEv.com/parkpride703) Send **parkpride703** and your message to **22333**




**In one or two words, tell us how you wish to describe Delano Line Park.**

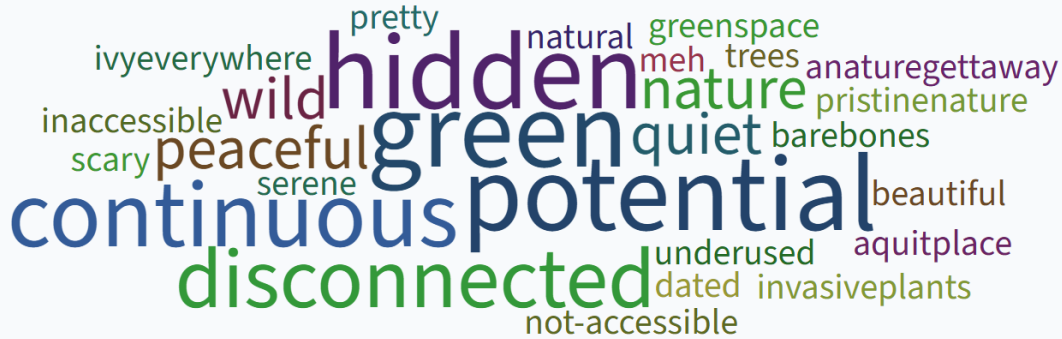


< 2 / 3 > | [Instructions](#) [Responses](#) [Clear responses](#)

When poll is active respond at [PollEv.com/parkpride703](https://PollEv.com/parkpride703) Send **parkpride703** and your message to **22333**



**In one or two words, describe Delano Line Park the way it is today.**



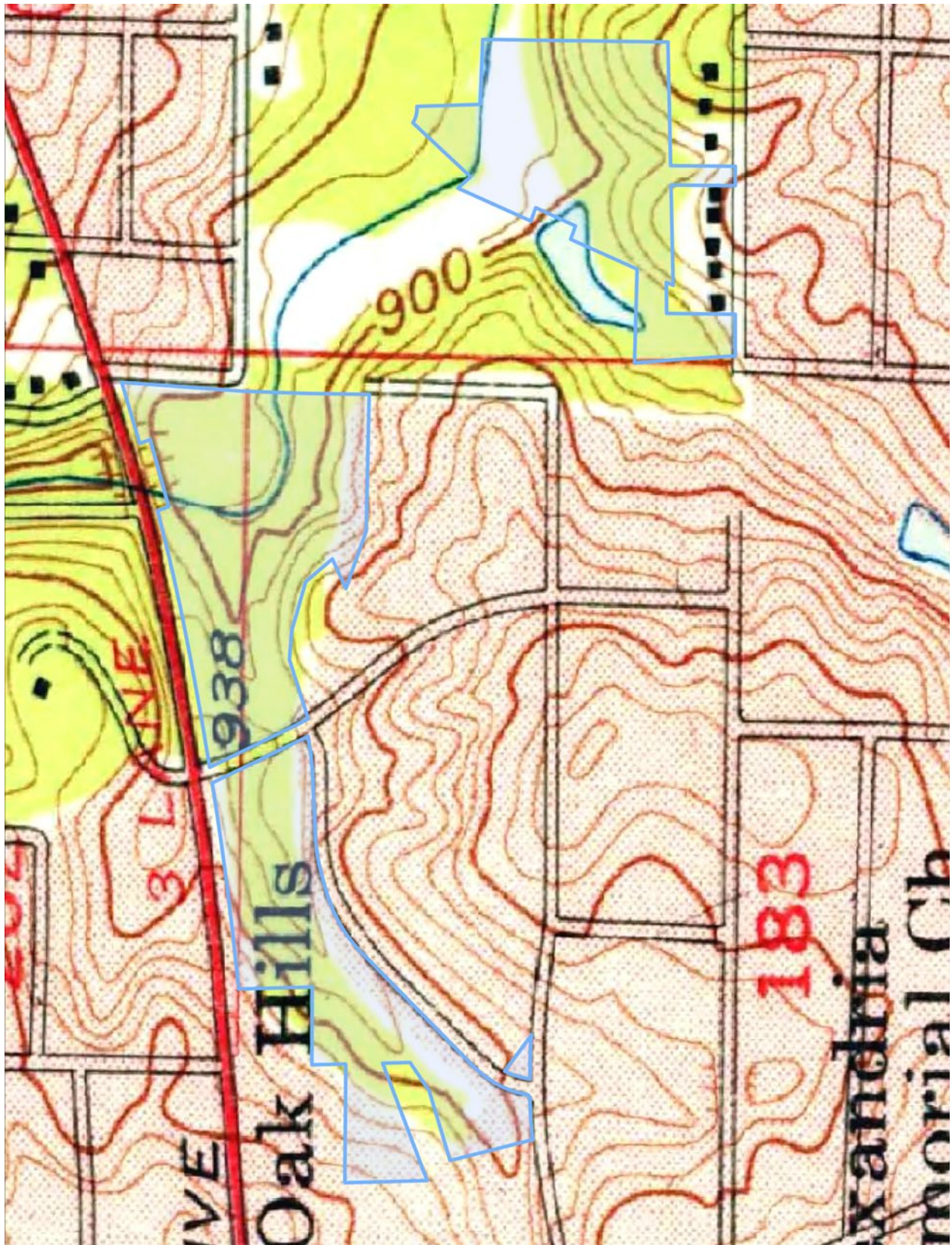
< 1 / 3 > | [Instructions](#) [Responses](#) [Clear responses](#)

Results from the PollEverywhere exercise. As participants sent in their responses, through a text message or the website, a word cloud was dynamically generated.

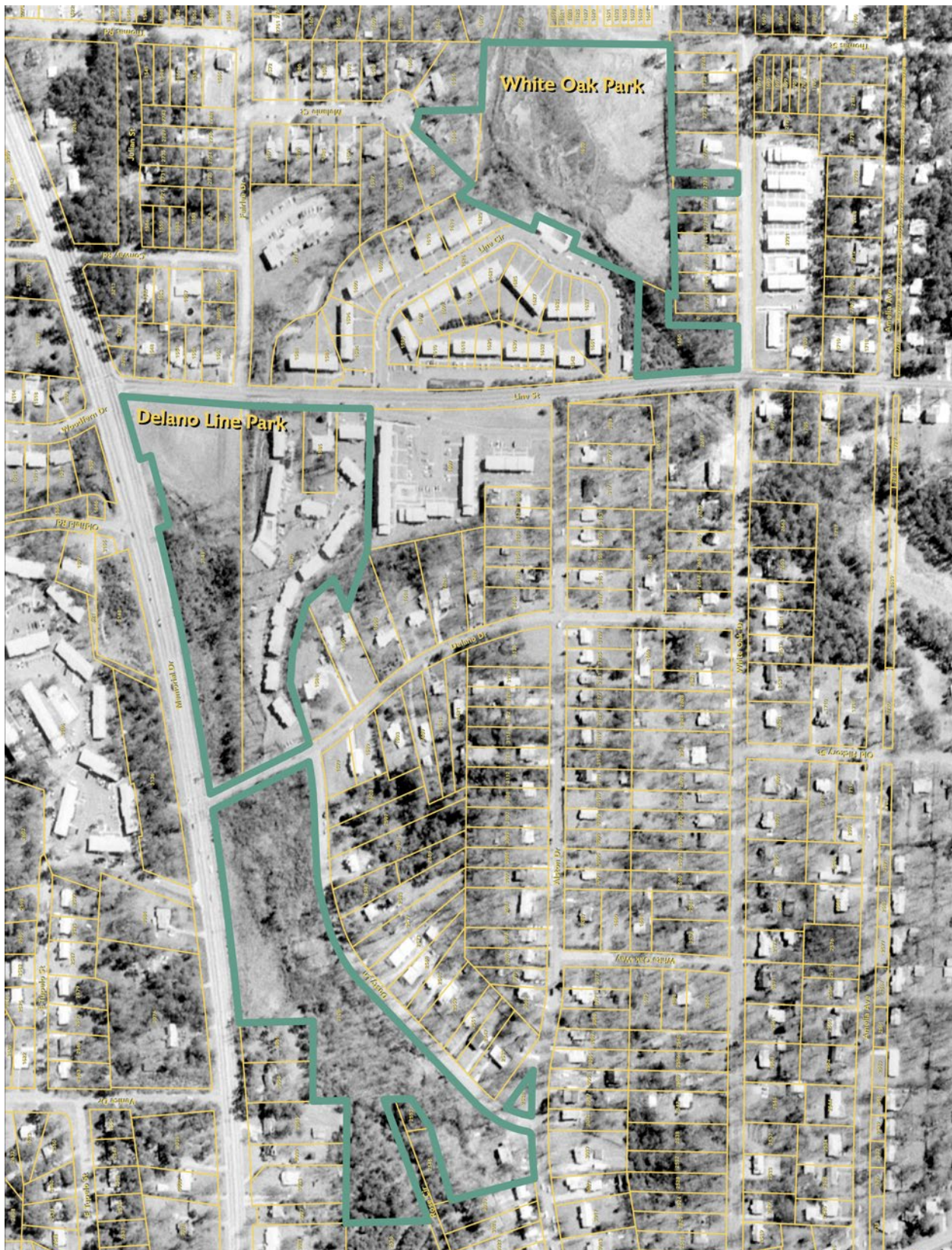


**Above:** Attendees chat with the visioning team while looking over the historic aerials.

**Left:** An attendees participates in the postcard to your future self exercise.



Topography map from 1956. The blue outlines are the boundaries of Delano Line Park and White Oak Park. Part of a series of maps that showed attendees of the first public meeting the past of the two parks.



Aerial from 1972. The second exhibit in the maps that showed past conditions of the parks. The apartment complex is in eastern portion of Delano Line Park. White Oak Park has a small fraction of the canopy coverage that exists today.





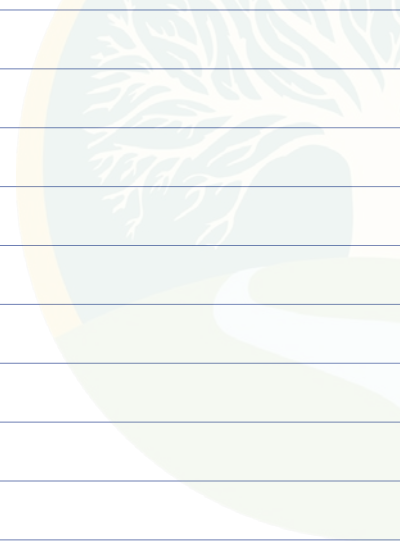
**Above:** The two focuses for White Oak Park was to add access points and nature trails throughout.

**Top Left:** Western portion of Delano Line Park adjacent to Dusty Ln and Delano Dr. Saving the trees was a priority. They provide shading for the existing gravel trail and a sound buffer for homes along Dusty Ln from Memorial Drive. Other attendees saw an opportunity for more greenspaces along Dusty Ln.

**Bottom Left:** The comments on the eastern side of Delano Line park focused on ways to program the space. Some of the suggestions were a dog park, an elderly walking track, and an improved playground. Concerns were also raised about safe crossings between the parts of the park.



Picture yourself in the future, enjoying a day in your neighborhood park. Write a postcard to a friend or family member describing what you were doing, who you were with, and how you felt in that moment. Don't worry about perfection—just let the ideas flow freely.



---

---

---

---

---

---

---

---

---

---

## VISION PLAN 2024-2025

Picture yourself in the future, enjoying a day in your neighborhood park. Write a postcard to a friend or family member describing what you were doing, who you were with, and how you felt in that moment.  
Don't worry about perfection—just let the ideas flow freely.

Oh this is so awesome! I love that our little White Oak community did this. Thank god we all worked together and made this area even more beautiful and functional!

Picture yourself in the future, enjoying a day in your neighborhood park. Write a postcard to a friend or family member describing what you were doing, who you were with, and how you felt in that moment.  
Don't worry about perfection—just let the ideas flow freely.

Imagining the perfect summer day with my dog and future children/family. Exploring the secluded nature trails in an area that is now massively developed. We are in a peaceful natural sanctuary away from the busy traffic of Memorial/Candler/Glenn. Maybe there is a public swimming pool my children and their friends can swim together at. We will also be riding bikes along the elevated boardwalk bike trails that run from South Decatur to City of Decatur and City of ATL via PATH trails. ☺

Picture yourself in the future, enjoying a day in your neighborhood park. Write a postcard to a friend or family member describing what you were doing, who you were with, and how you felt in that moment.  
Don't worry about perfection—just let the ideas flow freely.

Dearest Daniel, do you remember when we took Atticus, our little, all over Delano Park that sunny summer day? We enjoyed the open lawn with our picnic blanket, then took a walk around the boardwalk. We snuggled the fall leaves in the autumn on all the gravelled nature trails. I loved seeing that deer in the wild flower fields, early that morning, remember? - Love Luks 2591 Dusty LN 404-312-8757

Picture yourself in the future, enjoying a day in your neighborhood park. Write a postcard to a friend or family member describing what you were doing, who you were with, and how you felt in that moment.  
Don't worry about perfection—just let the ideas flow freely.

Ran into neighbors walking on nature boardwalk in White Oak park. Enjoyed all the native plants! The kids had a great time @ the accessible playground on Delano Line park. Saw some neighbors playing & hosting a baby party there. We did some bird watching in White Oak park. The community is planning a block party near Delano Line park next week. We love the community garden in Delano Line park. We grow pumpkins!

Picture yourself in the future, enjoying a day in your neighborhood park. Write a postcard to a friend or family member describing what you were doing, who you were with, and how you felt in that moment.  
Don't worry about perfection—just let the ideas flow freely.

Today we played at the Delano Line/Mypet for a while at dog park! We had a blast!

Picture yourself in the future, enjoying a day in your neighborhood park. Write a postcard to a friend or family member describing what you were doing, who you were with, and how you felt in that moment.  
Don't worry about perfection—just let the ideas flow freely.

Today I walked the pups at a dog doggent right down the street from our house on Thomas Rd. There was a small park for dogs and this for big dogs & a walking track for the elderly (great instead of a trail so they won't fall!) The park was full of so many happy families!

Picture yourself in the future, enjoying a day in your neighborhood park. Write a postcard to a friend or family member describing what you were doing, who you were with, and how you felt in that moment.  
Don't worry about perfection—just let the ideas flow freely.

Had a great day walking the trails! Excited to bring the kids to swings later. Hopefully we can all make the neighborhood festival next week - Cat

Picture yourself in the future, enjoying a day in your neighborhood park. Write a postcard to a friend or family member describing what you were doing, who you were with, and how you felt in that moment.  
Don't worry about perfection—just let the ideas flow freely.

I met a new mom today in the playground. I had to run my kid to the restroom which was clean and stocked with toilet tissue. I noticed some parents on the walk so I am glad that initiative caught on. On the way home, we checked the growth of the acorn trees. They are coming along nicely, and we are looking forward to adding those and the crows to our dinner salad.

Requests: restrooms, community garden, bike access

Picture yourself in the future, enjoying a day in your neighborhood park. Write a postcard to a friend or family member describing what you were doing, who you were with, and how you felt in that moment.  
Don't worry about perfection—just let the ideas flow freely.

TOOK the dog for a walk on a nice day. Was a much needed break from work from home + mental health break. Broke a sweat - good physical activity. Got lost in nature. Met some neighbors on the way + started a great conversation. Saw some plants/garden produce. Enjoyed the creek. Kids playing in the playground.

Picture yourself in the future, enjoying a day in your neighborhood park. Write a postcard to a friend or family member describing what you were doing, who you were with, and how you felt in that moment.  
Don't worry about perfection—just let the ideas flow freely.

My wife and I will walk all of our business and walk to White Oak Park along a baby wood path. A number of houses to choose from. We can have the creek.

Picture yourself in the future, enjoying a day in your neighborhood park. Write a postcard to a friend or family member describing what you were doing, who you were with, and how you felt in that moment.  
Don't worry about perfection—just let the ideas flow freely.

Morgan, while you were out of town, I took the pups to the dog park that just opened at White Oak Park. It is so nice right by the creek. I let the dogs run loose while I sat at the picnic tables enjoying the fall afternoon. Can't wait for you to visit! - Andrew

Picture yourself in the future, enjoying a day in your neighborhood park. Write a postcard to a friend or family member describing what you were doing, who you were with, and how you felt in that moment.  
Don't worry about perfection—just let the ideas flow freely.

Beautiful area with birds near by and also a place to park if I drive down (older people can't walk to far) Signage to promote the park and a small water fall that will bring calmness.

Picture yourself in the future, enjoying a day in your neighborhood park. Write a postcard to a friend or family member describing what you were doing, who you were with, and how you felt in that moment.  
Don't worry about perfection—just let the ideas flow freely.

It was a great day in the park! It's night and day from 10 years ago - all of the ironing and kids has been removed and there is a beautiful trail system and boardwalk connecting both sections on Dusty and White Oak Park. There are also new playground courts and a fun playground for the kids!

**Left:** Postcard designed by the visioning team for the activity.

**This Page:** Responses to the "Write a Postcard to yourself in the future about your day in Delano Line Park."



Attendees of the second public meeting chat about the concepts plans after the presentation.

## Public Meeting Two: Preliminary Concepts

The second public meeting was held on February 26, 2025, also at Scott Candler Library. Nineteen community members attended, along with Caleb Wittenmyer of Dekalb County Recreation, Parks and Cultural Affairs and Isaac White, District 3 Constituent Services Manager from the office of Nicole Messiah.

After a few words from Isaac White the results of the first survey were presented with data visualization graphics. The goal was to distill the complex results into a medium that could be quickly and easily understood. This allowed the attendees to better understand the design decisions that went into each concept. Draft guiding principles were developed using the PollEverywhere feedback from the first public meeting.

The proposed **guiding principles** were:

- Provide a safe, inclusive, and accessible space for respite in nature, environmental stewardship, and neighborhood connection.
- Establish park identity through highly visible park entrances and a variety of trails with clear signage and trail markings.
- Promote maintenance practices and neighborhood involvement that preserve natural ecosystems, control invasive plants and protect park infrastructure and amenities.

Once the survey results, guiding principles, and site context were delivered the two concepts were presented. Afterwards the physical version of the preference survey was handed out to the participants. The electronic version was opened at the same time. The survey ran for 4 weeks until March 21st.

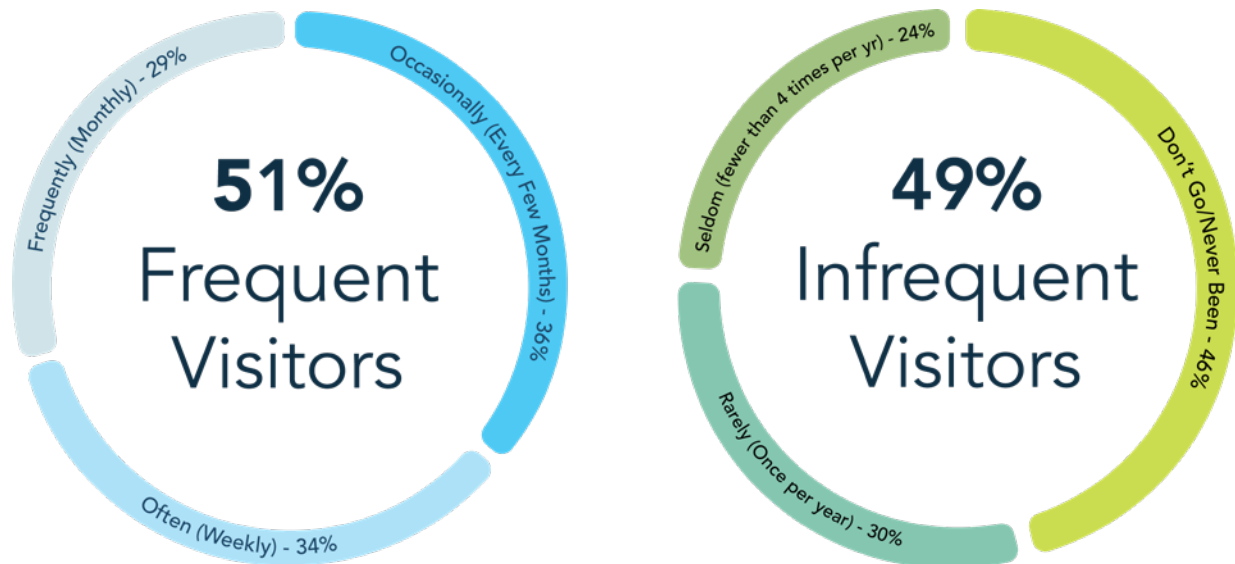


**Above:** Election style stickers given out to attendees of the public meetings

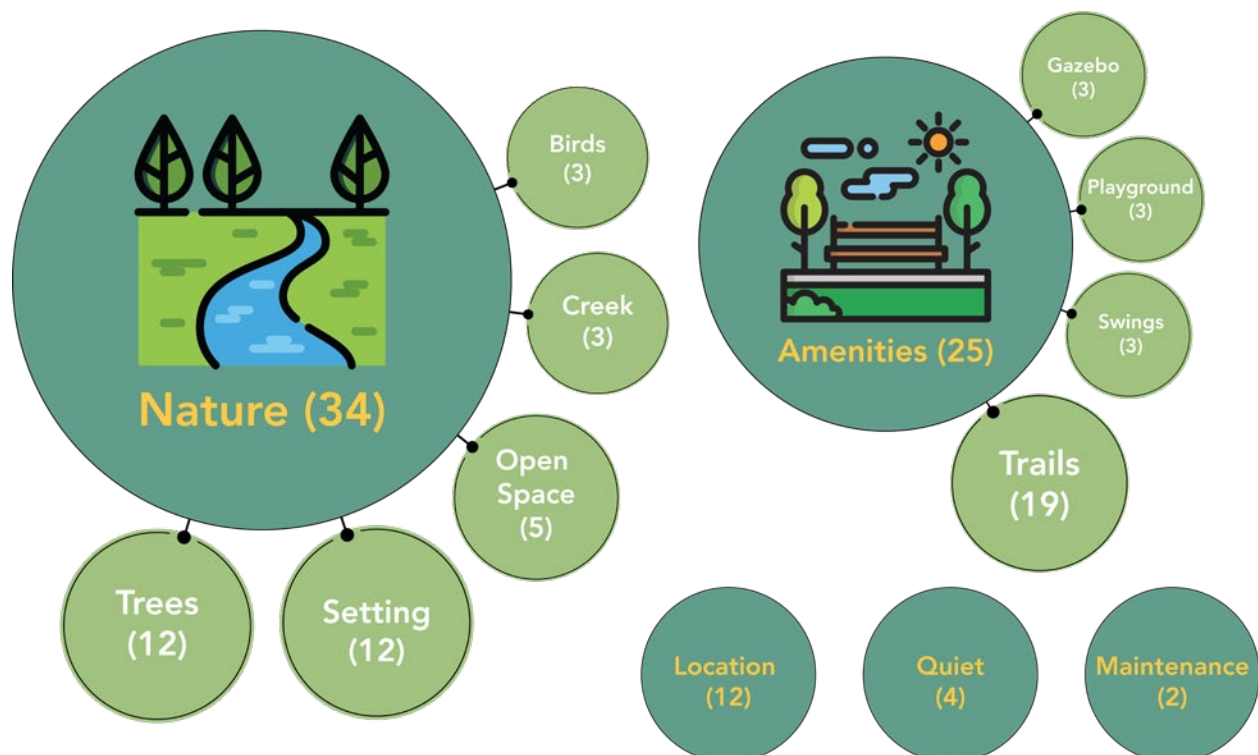
## Community Survey Results

105 responses generated a vast amount of data. As such, there was a need to distill the data into a format that was easy to understand. The data visualizations shown here helped steer design decisions for the vision plan concepts. For the full dataset refer to section 1 of the appendices.

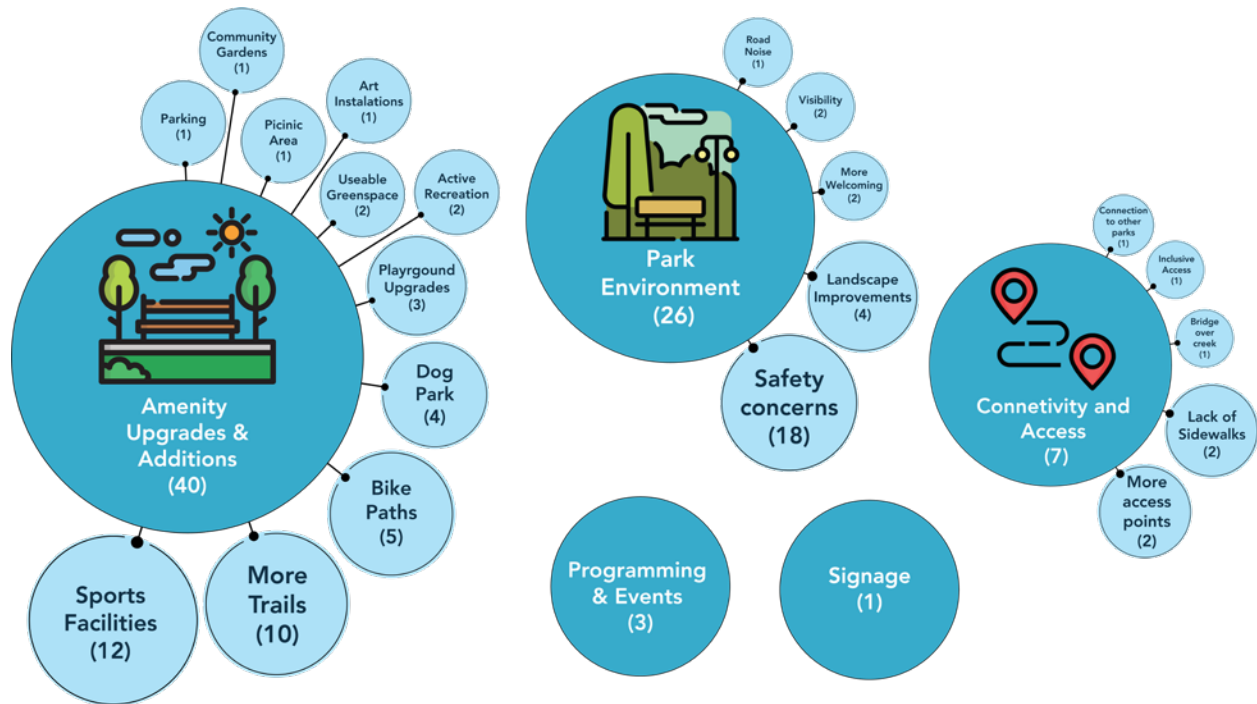
### How often do you visit Delano Line Park?



Frequent visitors of Delano Line Park were asked what they liked about it. The opportunity to get out on the trail amongst the trees and proximity to households were the most popular responses.



Those who were infrequent visitors of Delano Line Park were asked what would encourage them to visit more often. The most common responses referred to overall safety concerns and a lack of amenities ranging from more trails, sport courts, upgrades to existing features.



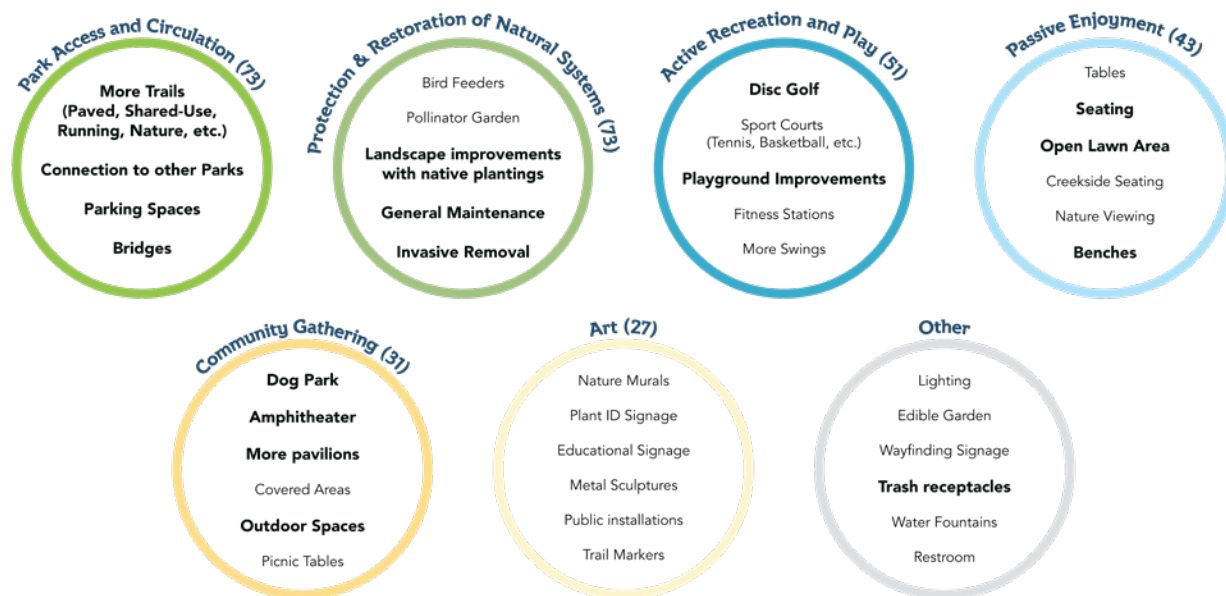
**Above:** Existing swing set located in the eastern side of Delano Line Park along Line St.

**Left:** Short gravel trail travels along the trees in the western side of Delano Line Park. The survey showed this was a favorite feature of visitors.

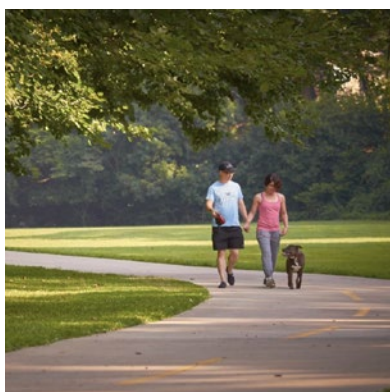
## What types of activities or features would you prioritize in Delano Line Park?



## What amenities have you seen at other parks that you would like to see provided at Delano Line Park?



Bridge at Lionel Hampton Park



Asphalt trail winding through a park



Bench at Deepdene Park

## Community Suggested Names for Delano Line Park

As part of the process the steering committee wanted to explore alternate names for Delano Line Park. One that would better reflect its connection to the neighborhood. Suggestions were opened up to the survey participants and these were the results.



Existing park sign with the current name of the park.

**White Oak Hills Park  
(19)**

**White Oak Park  
(9)**

**Belvedere Park  
(2)**

**White Oak Hills  
Park 1 & 2**

**White Oak Hills  
Neighborhood  
Park**

**Unity  
Park**

**Inspiration  
Park**

**East Memorial  
Park**

**Sunshine  
Park**

**St. Philip  
Park**

**Southeast  
Decatur  
Park**

**White Oak  
Belvedere Park**

**Wayne's White  
Oak Park**

**Reading  
Park**

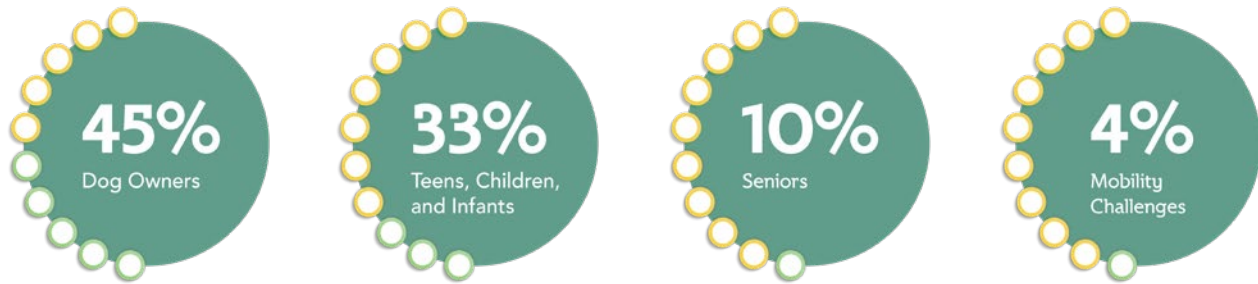
**Oak Forrest  
Park**

**John Lewis  
DeKalb  
Park**

**East Line  
Park**

**Green Acre  
Park on  
Line St**

## Who is in your household?

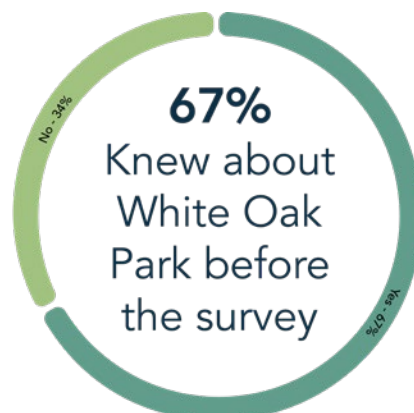
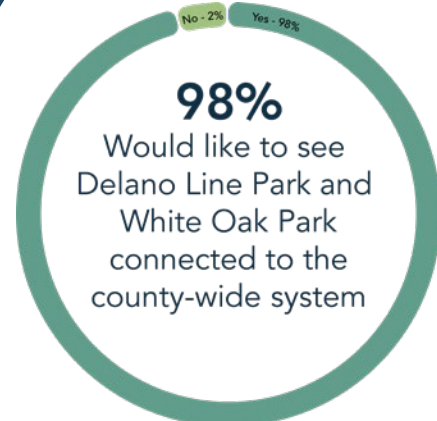


Adults [29]	Adults Dog Owners [27]	Adults Infant - 5 Years Old Dog Owners [10]	Adults Infant - 5 Years Old [9]	Adults Senior (65+) Dog Owners [9]	Adults Infant - 5 Years Old Children (6-12) [4]	Adults Children (6-12) Dog Owners [3]	Adults Children (6-12) Teenagers (13-18) Dog Owners [3]	Adults Persons with Mobility Challenges Dog Owners [2]
Adults Seniors (65+) [2]	Seniors (65+) [2]	Adults Children (6-12) Persons with Mobility Challenges [1]	Adults Infant - 5 Years Old Children (6-12) Teenagers (13-18) [1]	Adults Infant - 5 Years Old Teenagers (13-18) Dog Owners [1]	Adults Seniors (65+) Mobility Challenges Dog Owners [1]	Adults Seniors (65+) Mobility Challenges Dog Owners [1]	Adults Teenagers (13-18) [1]	Seniors (65+) Teenagers (13-18) Children (6-12) [1]

High Frequency

Low Frequency

Several questions from the survey were focused on White Oak Park which is southeast of Delano Line Park. The goal was to increase awareness of this space and to understand what kinds of activities would be preferred there. Being located along Shoal Creek creates a potential link to nearby parks.



**How do you feel about White Oak Park being opened for public use?**  
(selected quotes from survey)

"Minimal activation through a natural trail might encourage stewardship. I have some concern about out-of-sight abuse of the space (litter, graffiti, drug use)."

"As long as it is well maintained, so it doesn't get trashed, I wouldn't have a problem with that. We should encourage people to respect the space by ensuring it stays nice."

"I think that's great! Parks should be shared and used by all."

"I would love community events in the park."

Overall, responses reflect a balance of enthusiasm, concerns about safety and maintenance, and support for community engagement and preservation.

"Great—as long as it is safe. Appropriate lighting, waste receptacles, and coordination with law enforcement and code enforcement to discourage squatting and homeless encampments."

"As long as increased safety measures are implemented, I am happy with that."

"I would enthusiastically be in support of this! I think it's a unique space that could be utilized for long-overdue beautification to the corridor, as well as an opportunity to invest in local artists to create permanent installations and spaces for the public to relax."

**How might the parks benefit you and/or the community?**  
(selected quotes from survey)

"It would create a space where the neighborhood and community can come together, play sports, exercise, have picnics, and just hang out with other neighbors in the community."

"It would provide a safer and community-driven park for the neighborhood. Many residents walk, and this will provide a safe space and community-endorsed environment."

"It would be incredible to have a safe, nice park that is walking distance to so many members of the community. A place where families and people of all ages can enjoy together."

"A safe space for gatherings and community. Bring my child and dog while connecting with neighbors."

Overall, the themes centered around a safe, accessible space that can provide a connection to nature, community gatherings, and recreation.

"Provide the community with walkable green space and the ability to access and enjoy the natural water feature running through our community. Allow clean-up and restoration of this water body."

"Our community relies heavily on pedestrian access and public transportation. Increasing accessibility and connectivity from all nearby corridors to the park while also investing in safety features for all would be a huge benefit."

"Additional space to walk my dog without having to dodge cars. A closer option for me and allows others in the vicinity the chance to enjoy nature!"



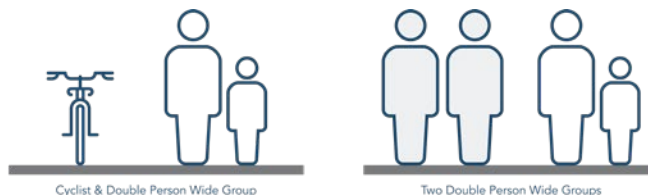
*Visioning team discussing the concepts after giving the presentation.*



Venn diagram comparing the design elements from both concepts. Used to frame the discussion before a deep dive into each concept.

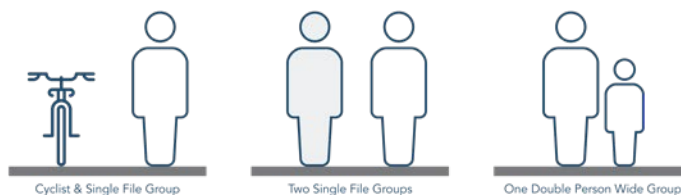
## 12' Wide Path (Wider)

- Width of a typical single traffic lane.
- Enough space for two groups coming from opposite directions to pass by each other.
- Wide enough for a two person wide group and a cyclist to comfortably pass by.



## 8' Wide Path (Medium)

- Slightly wider compared to a typical sidewalk.
- Enough space for a double file group.
- Oncoming groups would have to make space to pass by each other.



## 6' Wide Path (Narrower)

- Width of a typical sidewalk.
- Enough space for a single file group.
- Oncoming groups would have to make space to pass by each other.



The trails were the main component in both concepts. To differentiate between them different trail widths were offered. This diagram presented at the public meeting helped illustrate the use cases for paths at the different widths.

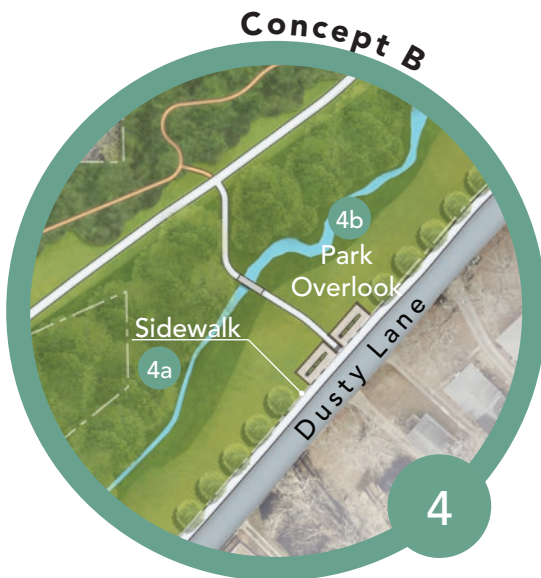




## Delano Line - Concept A

The focus for this concept was maximizing the amount of open space to create areas for various kinds of activities, such as disc golf. The playground along Line St is renovated and a new pavilion and off-street parking lot are added. A 12' wide primary trail and 6' wide secondary trail are added across the park. Native plantings are included along Dusty Ln to compliment the new trail. Nature trails are added to the wooded areas to provide a new experience for visitors. Finally, a new playground is added along Dusty and Alston to maximize the space at that corner. A dog park is placed in the northeastern corner to activate that area with a new bridge providing access.

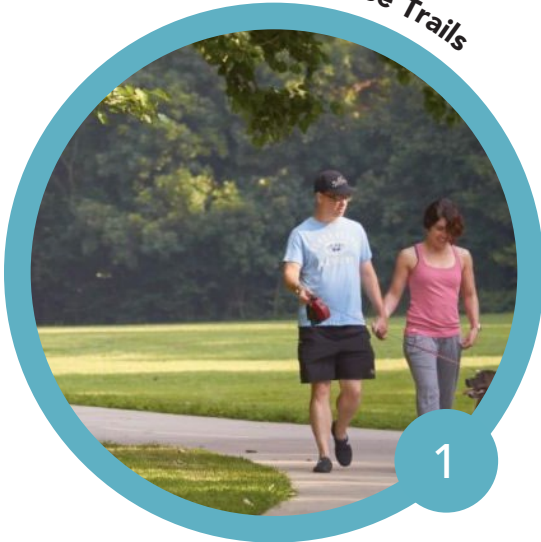




## Delano Line - Concept B

With this concept the goal was to create as much walking routes as possible. Such as a new sidewalk along Dusty Ln. All the trails are the same width and aligned to be taken as circuits. Nature trails in the wooded areas is also provided to provide a different experience. Small gathering spaces, such as a bench swing overlook and picnic tables, are provided along the new trail as areas to rest and enjoy nature. A small playground upgrades the existing one at the corner of Dusty and Alston. Another playground and overlook for Shoal Creek is added to the northeastern corner of the park.



**Shared-Use Trails**

1

**Nature Trails**

2

**Shoal Creek Stream Crossing**

3

**Trailheads at Neighborhood Entrances**

4

## White Oak - Concept A

Due to the nature of this site the primary thing we wanted to provide was access to interior of the park. For this concept the goal was to provide access from multiple points around the park. This includes a bridge across Shoal Creek to the portion of the park adjacent to Melanie Court and two entrances with trailheads on White Oak Drive. The multi-use trail would connect to the other Shoal Creek Parks downstream. Off the primary paved trails a series of nature trail would wind through the park.



**Boardwalk**

1

**Shared-Use Trail**

2

**Major Entrance**

3

**Nature Trails**

4

## White Oak - Concept B

For this concept the goal was to provide access through the heart of the park via a boardwalk which transitions to a shared-use trail. Access from the neighborhood side is available through natural surface paths that connect to the broader nature trail network on the interior of the park. A more formal entrance is provided at the intersection of Line St and White Oak Drive. Like the previous concept the shared-use trail has the ability to link up with the Shoal Creek Parks downstream.



Andrew White goes over the features from one of the vision plans for the White Oak Hills Neighborhood

## Public Meeting Three: Vision Plan

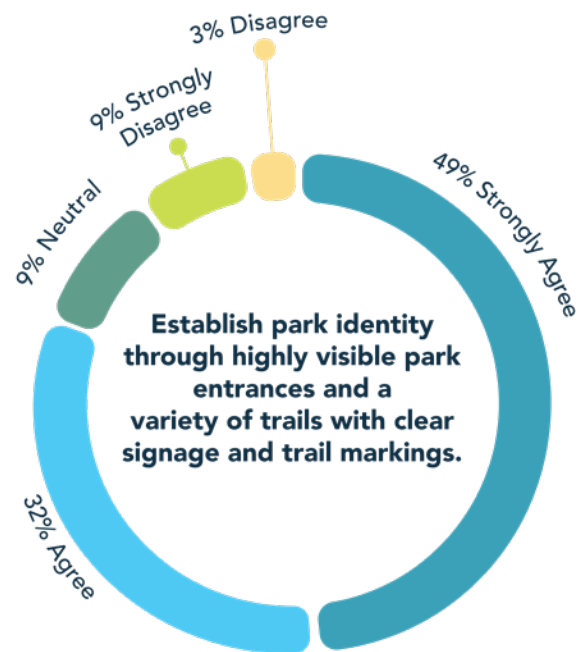
The third and final public meeting was held on April 9, 2025. The weather cooperated and we were able to have the meeting in the park at the pavilion at the intersection of Alston Dr and Dusty Ln. We always like to have the final public meeting in the park receiving the vision plan. It is a nice note to end on and allows attendees of the meeting to imagine the future shown on the concept plans. Unlike the previous public meetings there wasn't a PowerPoint presentation. Instead, it operated as more of an open house where people could come and go as they wanted. This created a more conversational environment where we could discuss elements of the vision plan and the next steps in a more informal manner. At the meeting we had the survey results and vision plans on display. Seventeen people attended the meeting.

## Concept Feedback Survey Results

69 responses came from the survey on the two concepts. This feedback was used to synthesize the concepts into single concept plans for Delano Line Park and White Oak Park. All the data generated was aggregated into charts. This helps to effectively and efficiently explain the design decisions that went into the concepts.

## Guiding Principles

The three guiding principles presented at the second public meeting were evaluated with a likert scale. This allowed survey takers to indicate their level of support for each principle. All of the principles were rated favorably. With all three receiving the majority of responses in the strongly agree and agree categories.



## Feature Preferences

The items in the graphic below are elements that appeared in both concepts. Survey participants were asked to indicate their level of support for each. The items have been listed in order of what had the strongest approval to least. Overall there wasn't a single item that had more than a few responses that were on the negative end of the spectrum. With park entrance design having the most mixed response.

**Invasive plant removal** in both parks along with targeted areas of **landscape beautification**.



**Safer pedestrian road crossings** and traffic calming devices  
(ex: raised crosswalks, speed humps, etc)



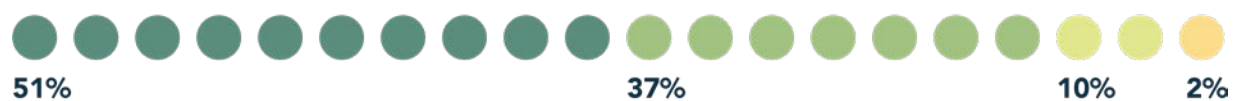
Added **site furnishings** like bike racks, benches, waste receptacles, and picnic tables.



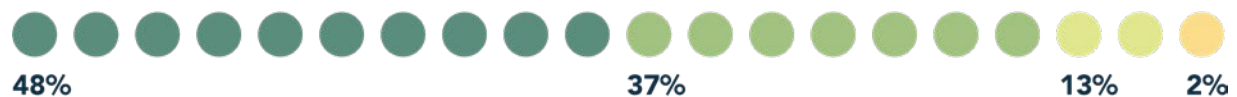
**Unpaved nature trails** are proposed in forested areas to provide better access to nature.



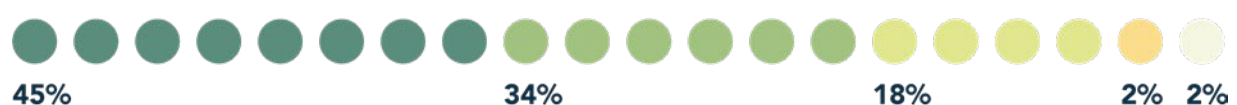
**Updated playground equipment** and improved design for the playgrounds  
at each end of the park.



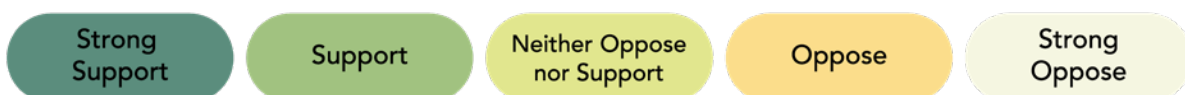
**Asphalt walking trails** connect park entrances with major features within the park  
and **enhance accessibility**.

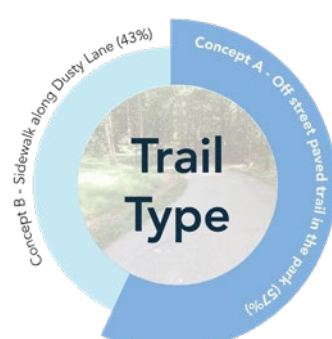


Consistent **park entrance design** to help establish park identity.



### Legend





### Feature Preferences

Survey participants were given a choice between key elements from each concept plan. The winners from each pairing were combined into the plan shown at this meeting.

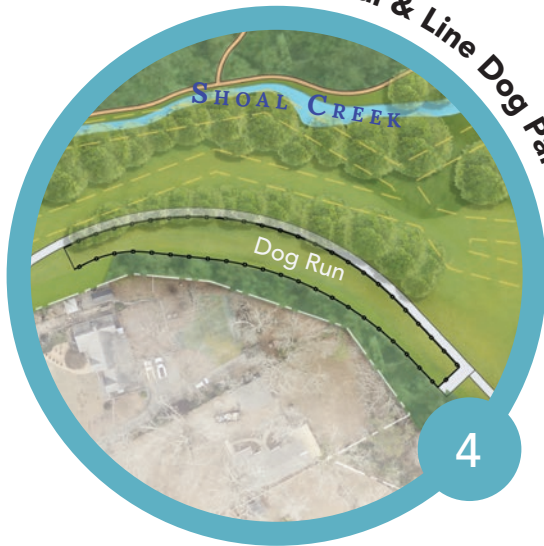


**Above:** Attendees enjoy some ice cream from Jenni's before they look at the two vision plans for Delano Line Park and White Oak Park

**Left:** A family chats with the Visioning Team as they sign in for the final public meeting in Delano Line Park.



### Memorial & Line Dog Parks



### Shoal Creek Bridge



### Community Gathering Area



### Nature Trails



## Delano Line Park Vision Plan

With the feedback from the community we refined the concepts into a vision plan. The amount paved routes was reduced. The width of primary trails was reduced to 8 feet wide and secondary trails to 6 feet wide. The path along Dusty now links to a gathering space built into the hill with native plantings serving as a buffer from the street. There is only one playground recommended in the plan. The one on Line St was increased in size to account for the reduction. Off-street parking is still included with the playground and pavilion. The dog park was relocated from the northeastern corner to reduce any incidents with dog getting into traffic on Memorial Dr. Now a comparable dog run is provided in the flat area adjacent to Delano Dr. The bridge remains as it is a vital connection point to the northeastern corner of the park. A standardized entrance package is at multiple points within the park. This includes fencing, a park sign, and site furnishings. Nature trails remain in the plan as they offer a different experience to experience nature in the park. Traffic calming devices and street crossings also remain in the plan as they are an essential to safely getting around the park. Overall this plan seeks to balance providing activities in the park with a serene experience in nature along Shoal Creek.



**Boardwalk****Shared-Use Trail****Major Entrance****Nature Trails**

## White Oak Park - Vision Plan

The design for White Oak Park remains largely unchanged. There was a desire from the community to approach this space with a minimal approach. The number of access points was reduced to two. With a major one at the intersection of Line St and White Oak Dr. The secondary entrance is further down White Oak Dr. Overall the focus was on providing a way to safely access this space and enjoy the nature within the park.



*Opening in the trees creates an informal path along the eastern side of Delano Line Park.*

## Projects & Budget

To create an opinion of probable cost, Delano Line Park was divided into several projects and White Oak Park is listed all together.

Ultimately, the construction process will be contingent upon funding. Several funding possibilities are available, including Park Pride grants, other State and National grants, funding from the DeKalb County, SPLOST and Bond dollars, or additional dollars identified by the community and other advocacy organizations.

The estimates included in this document were created with limited information, without the benefit of survey, detailed utility, and other information which may change significantly the cost of any project. Furthermore, volatility in the construction market makes predicting the cost of future projects challenging. Park Pride makes no warranty as to the accuracy of the pricing in this chapter. It is meant only as a starting point for conversations about prioritization as funding becomes available.

## Opinion of Probable Costs by Project, September 2025

The budgets presented here are intended to provide a starting point for fund raising and advocacy efforts and were compiled without the benefit of detailed design, survey, geotechnical, and other site conditions, which may change significantly the cost of any project. Park Pride makes no guarantee or warranty as to their accuracy. Projects may be value engineered or subdivided to fit smaller budgets.

### Delano Line Park - Opinion of Probable Cost September 2025

Nature Trails				
Item	Unit	Qty	Cost/Unit	Extended Cost
Clearing/Site Prep/Grading	ALLOW	1	\$ 12,000.00	\$ 12,000.00
4' Wide Natural Surface Trail	LF	2700	\$ 9.75	\$ 26,325.00
Design & Engineering	15%	1	\$ 0.15	\$ 5,748.75
Contingency	25%	1	\$ 0.25	\$ 9,581.25
<b>Total</b>			<b>\$</b>	<b>\$ 53,655.00</b>

Asphalt Trails				
Item	Unit	Qty	Cost/Unit	Extended Cost
Grading/Site Prep	ALLOW	1	\$ 54,000.00	\$ 54,000.00
6 & 8' Wide Asphalt Paved Trail	SF	28700	\$ 12.50	\$ 358,750.00
Design & Engineering	15%	1	\$ 0.15	\$ 61,912.50
Contingency	30%	1	\$ 0.30	\$ 123,825.00
<b>Total</b>			<b>\$</b>	<b>\$ 598,487.50</b>

### Native Landscape Plantings (Along Dusty Ln)

Item	Unit	Qty	Cost/Unit	Extended Cost
Grading/Site Prep	ALLOW	1	\$ 14,000.00	\$ 14,000.00
Native Plants	ALLOW	1	\$ 50,000.00	\$ 50,000.00
Design & Engineering	15%	1	\$ 0.15	\$ 9,600.00
Contingency	20%	1	\$ 0.2	\$ 12,800.00
<b>Total</b>			<b>\$</b>	<b>\$ 86,400.00</b>

### Dog Run

Item	Unit	Qty	Cost/Unit	Extended Cost
Grading/Site Prep	ALLOW	1	\$ 25,000.00	\$ 25,000.00
Fencing and Gates	ALLOW	1	\$ 35,000.00	\$ 35,000.00
Site Furnishings	ALLOW	1	\$ 16,000.00	\$ 16,000.00
Design & Engineering	15%	1	\$ 0.15	\$ 11,400.00
Contingency	25%	1	\$ 0.25	\$ 19,000.00
<b>Total</b>			<b>\$</b>	<b>\$ 106,400.00</b>

Playground Upgrade and Parking at Line St						
Item	Unit	Qty	Cost/Unit	Extended Cost	Notes	
Grading/Site Prep	ALLOW	1	\$ 50,000.00	\$ 50,000.00	Demo/General conditions/EPSC fencing/Tree protection	
Concrete Walkway	SF	1100	\$ 14.00	\$ 15,400.00	Adjacent to parking lot. Connects playground sidewalk on Line St.	
Asphalt Parking Lot	SF	4700	\$ 18.00	\$ 84,600.00	Includes striping for 6 spaces and 1 ADA space	
Small Pavilion	ALLOW	1	\$ 65,000.00	\$ 65,000.00	Parent pavilion near playground	
New Playground	ALLOW	1	\$ 150,000.00	\$ 150,000.00	Approximately 6500 SF of play area	
Playground Installation (30%)	30%	1	\$ 0.30	\$ 45,000.00		
Site Furnishings	ALLOW	1	\$ 50,000.00	\$ 50,000.00	Benches, water fountains, trash cans, etc.	
Native Plantings	ALLOW	1	\$ 10,000.00	\$ 10,000.00	Native shrubs and perennials	
Design & Engineering	15%	1	\$ 0.15	\$ 70,500.00	Plan to spend 15% of total budget in design & engineering fees	
Contingency	25%	1	\$ 0.25	\$ 117,500.00	Plan for a contingency budget of 25%	
Total				\$ 658,000.00		
Sidewalk and Traffic Calming Upgrades (Delano Dr & Line St)						
Item	Unit	Qty	Cost/Unit	Extended Cost	Notes	
Grading/Site Prep	ALLOW	1	\$ 60,000.00	\$ 60,000.00	Demo/General conditions/EPSC fencing/Tree protection	
Concrete Sidewalk	SF	9200	\$ 14.00	\$ 128,800.00	6' along Delano Dr, 12' along Line St; connects to existing sidewalk on Memorial Dr	
Stream Crossing Widening	ALLOW	1	\$ 30,000.00	\$ 30,000.00	Along Line St, to match width of new Line St sidewalk (12')	
Split Rail Fencing with Masonry Posts	LF	103	\$ 45.00	\$ 4,635.00	Includes lumber, masonry, and any necessary hardware	
Striping for Pedestrian Crossing	ALLOW	1	\$ 7,500.00	\$ 7,500.00	Typical Dekalb County painted pedestrian crossing	
Speed Hump	ALLOW	1	\$ 7,500.00	\$ 7,500.00	Typical Dekalb County speed hump	
Design & Engineering	15%	1	\$ 0.15	\$ 35,765.25	Plan to spend 15% of total budget in design & engineering fees	
Contingency	20%	1	\$ 0.20	\$ 47,687.00	Plan for a contingency budget of 30%	
Total				\$ 321,887.25		
Pedestrian Bridge						
Item	Unit	Qty	Cost/Unit	Extended Cost	Notes	
Grading/Site Prep	ALLOW	1	\$ 90,000.00	\$ 90,000.00	Demo/General conditions/EPSC fencing/Tree protection	
Pedestrian Bridge	LS	1	\$ 600,000.00	\$ 600,000.00	Includes 1 bridge and 2 Concrete Abutments (125 LF)	
Design & Engineering	15%	1	\$ 0.15	\$ 103,500.00	Plan to spend 15% of total budget in design & engineering fees	
Contingency	20%	1	\$ 0.20	\$ 138,000.00	Plan for a contingency budget of 20%	
Total				\$ 931,500.00		

## PROJECTS &amp; BUDGET

## Community Gathering Space

Item	Unit	Qty	Cost/Unit	Extended Cost	Notes
Grading/Site Prep	ALLOW	1	\$ 90,000.00	\$ 90,000.00	Demo/General conditions/EPSC fencing/Tree protection
Concrete Paving	SF	950	\$ 14.00	\$ 13,300.00	For small area leading to stairs and stage
Split Rail Fencing with Masonry Post	LF	30	\$ 45.00	\$ 1,350.00	Includes lumber, masonry, and any necessary hardware
Masonry Stairs	ALLOW	1	\$ 36,000.00	\$ 36,000.00	Leads from street level down to the seating area
Masonry Seating	ALLOW	1	\$ 75,000.00	\$ 75,000.00	Stone veneer seating built into hillside
Design & Engineering	0.15	1	0.15 \$	32,347.50	Plan to spend 15% of total budget in design & engineering fees
Contingency	0.3	1	0.2 \$	43,130.00	Plan for a contingency budget of 30%
<b>Total</b>				<b>\$ 291,127.50</b>	

## Signage and Trailheads

Item	Unit	Qty	Cost/Unit	Extended Cost	Notes
Clearing/Site Prep/Grading	ALLOW	1	\$ 30,000.00	\$ 30,000.00	Demo/General conditions/EPSC fencing/Tree protection
Park Signs	EA	6	\$ 5,000.00	\$ 30,000.00	Design and Materials TBD
Concrete Paving	SF	1000	\$ 14.00	\$ 14,000.00	For area that contains the park sign and fencing
Split Rail Fencing with Masonry Post	LF	140	\$ 45.00	\$ 6,300.00	Includes lumber, masonry, and any necessary hardware
Traffic Control Devices (Bollards or Boulders)	ALLOW	1	\$ 10,000.00	\$ 10,000.00	Barrier to keep cars off of trailheads where needed
Curb Ramps	ALLOW	1	\$ 10,000.00	\$ 10,000.00	ADA compliant ramps with all necessary features required by code
Site Furnishings	ALLOW	1	\$ 45,000.00	\$ 45,000.00	Benches, water fountains, trash cans, etc.
Design & Engineering	0.15	1	0.15 \$	21,795.00	Plan to spend 15% of total budget in design & engineering fees
Contingency	0.25	1	0.25 \$	36,325.00	Plan for a contingency budget of 25%
<b>Total</b>				<b>\$ 203,420.00</b>	

## Miscellaneous Projects - Traffic Access Control at Existing Pavilion

Item	Unit	Qty	Cost/Unit	Extended Cost	Notes
Site Prep & Demo	ALLOW	1	\$ 40,000.00	\$ 40,000.00	Demo/General conditions/EPSC fencing/Tree protection
Concrete Curbing	LF	100	\$ 30.00	\$ 3,000.00	Standard design for Dekalb County
Split Rail Fencing with Masonry Post	LF	100	\$ 45.00	\$ 4,500.00	
Landscape Enhancements	ALLOW	1	\$ 7,500.00	\$ 7,500.00	Native shrubs and grass
Concrete Paving	SF	500	\$ 14.00	\$ 7,000.00	
Design & Engineering	0.15	1	\$ 0.15	\$ 9,300.00	Plan to spend 15% of total budget in design & engineering fees
Contingency	0.25	1	\$ 0.25	\$ 15,500.00	Plan for a contingency budget of 25%
<b>Total</b>				<b>\$ 86,800.00</b>	

## Delano Line Park Grand Total

\$ 3,337,677.25

White Oak Park - Opinion of Probable Cost September 2025						
Item	Unit	Qty	Cost/Unit	Extended Cost	Notes	
Clearing/Site Prep/Grading	ALLOW	1	\$ 150,000.00	\$ 150,000.00	Demo/General conditions/EPSC fencing/Tree protection	
Multi Use Trails	ALLOW	1	\$ 400,000.00	\$ 400,000.00	12' Wide Concrete pathway suitable for cyclist and pedestrians	
4' Wide Natural Surface Trail	LF	2300	\$ 9.00	\$ 20,700.00		
Trailhead	ALLOW	1	\$ 8,000.00	\$ 8,000.00	at new White Oak Dr Entrance	
Concrete Sidewalk	SF	8800	\$ 12.00	\$ 105,600.00	Along eastern side of Line St leading to trail starting point	
Traffic Calming Upgrades	ALLOW	1	\$ 5,000.00	\$ 5,000.00	Speed Humps and other interventions as needed	
Design & Engineering	0.15	1	\$ 0.15	\$ 103,395.00	Plan to spend 15% of total budget in design & engineering fees	
Contingency	0.25	1	\$ 0.25	\$ 160,673.75	Plan for a contingency budget of 25%	
Total				\$ 953,368.75		



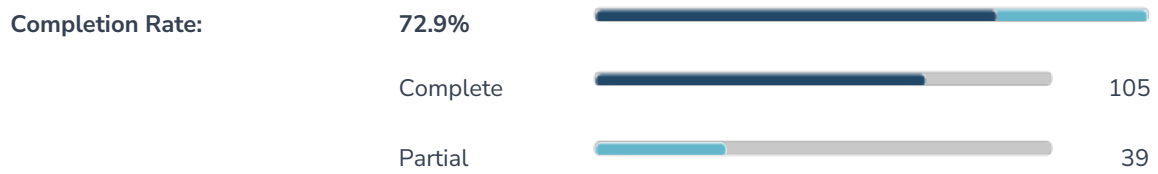
# Appendices

## Notes:

- The ResponseID is not a total count of the number of survey participants. It is a unique sequential number assigned to each submitted response by our survey software Alchemer. The ResponseID is not related between each survey. For example ResponseID 13 from survey A is not the same individual as ResponseID 13 from survey B.
- Surveys with at least one completed question were included in the dataset. Instances where the surveys were completely blank have been omitted.
- Sometimes there will be a different number of total responses for each question. This is because no question is required. A participant can choose to answer as many as they would like.
- In some cases it is necessary to redact any personal identifying information from the open responses questions.

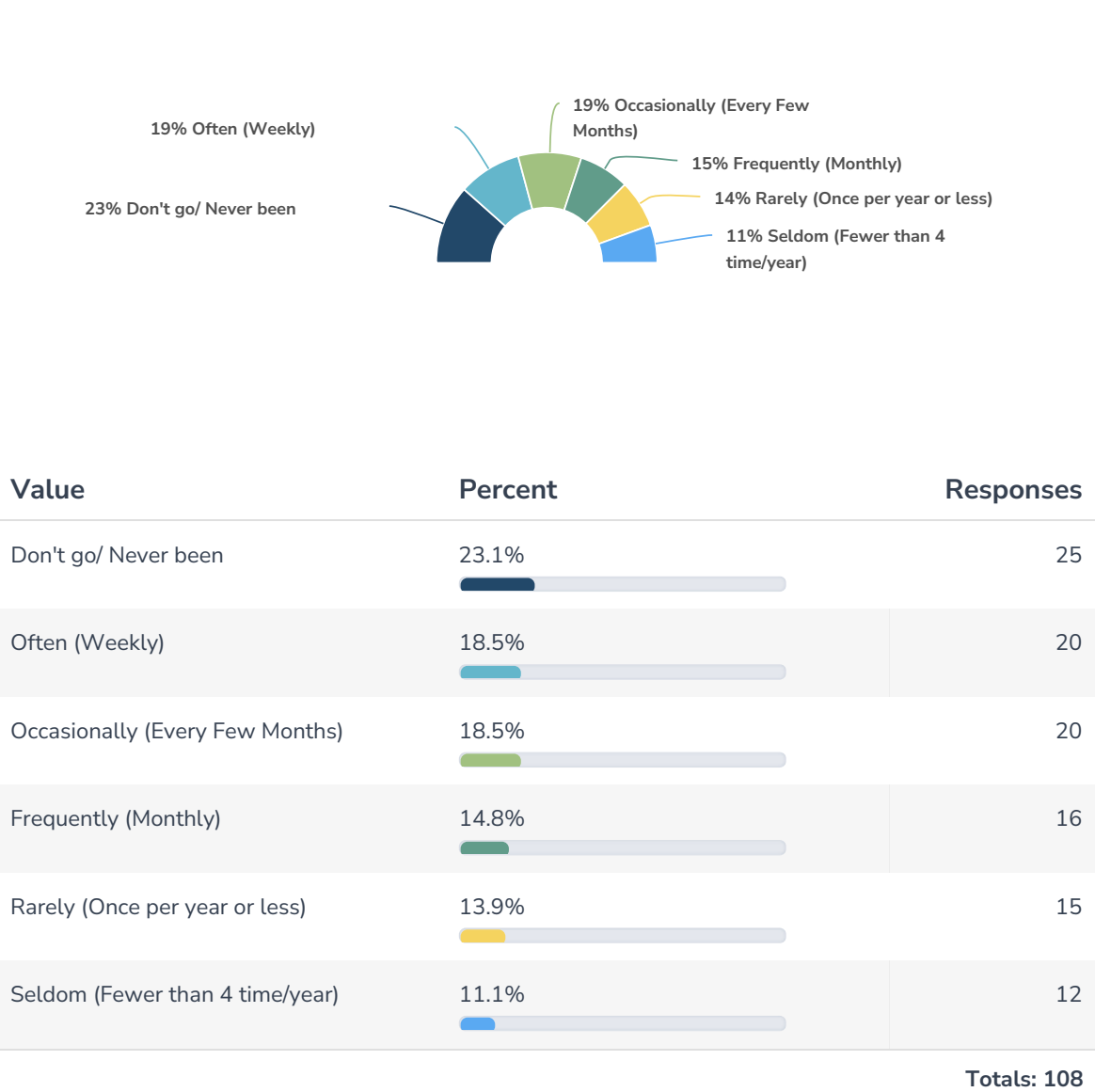
# Report for Delano Line Park Community Survey

## Response Counts



Totals: 144

1. How often do you visit Delano Line Park?



## 2. What do you like most about Delano Line Park?

ResponseID	Response
13	The swings and the green space.
16	Topography west of Delano, openness of space east of Delano, mature trees, creek view (when vegetation is cleared), buffering of Memorial Dr. noise
19	The beautiful trails through the forest and along the creek. It feels like you're in a remote nature preserve, but only a few steps from Memorial Drive.
22	I love the size of it and distance from my house. I love that it simply exists and I love the potential.
23	It's right across the street from us.
24	Quiet and relatively clean.
25	Nature aesthetic and the historic trees
26	The swings and nature trail; and loved the trees !!
27	Proximity to home
30	Its natural beauty and running trails.
36	Trees
37	I like that it has a walking trail! All the trees help with reconnecting with nature.
40	The path where I can walk and see birds
46	How green and quiet it is
48	Walking trail, tree cover, creek bridge.
51	It's pretty
53	A relatively quiet park, where one can appreciate the natural world.
58	The proximity to my house and the secluded, rustic trails with tall trees that make you feel like you're truly "in nature."
61	I love the trail through the woods! It gives a nature-y feel right in the neighborhood.
63	Location, very close to our house
64	Location; trails; nature

**ResponseID    Response**

66	Being able to have an area to enjoy/walk/relax in without worrying about cars whizzing past me. Also, the trees.
72	It's quiet and peaceful (despite being close to Memorial Dr). There's a stream. There are open spaces and lots of trees.
74	Close to our house and the amount of open space
76	It's has so much Green Space it's really a Beautiful Park.
77	Walking trail
78	the playground and how its maintained
79	Location to my home
81	Location.
82	Convenience and nature!
83	I like the access to nature and that I can walk my dog.
85	Wild blackberries. Play area.
86	It has a mini hidden trail!
89	Swing set - adult (not playground) trails
94	The buffer it provides to the neighborhood from Memorial Drive.
95	Delano Line Park plays a perhaps overlooked but highly important role as a buffer between the neighborhood and Memorial Drive. It provides a visual cue that this area is (or should be treated as) residential.
99	Gazebo
101	Walking trails. I walk around from Line every day or two.
108	Walking trail
109	Amenities
111	The hard woods.
117	The path on dusty lane
120	Walking trails and natural settings with trees and greenery

**ResponseID    Response**

121            Woods stream

127            Sidewalks-kid scooter use!

128            I like that there is a green space/park within walking distance of my home. I like the trails and bridges.

129            Nice walking path in the neighborhood

132            The walking trail and little bridges

138            I enjoy how wide it is and I take my dogs for long walks.

147            I can walk my dogs without a lot of people or other dogs running into us

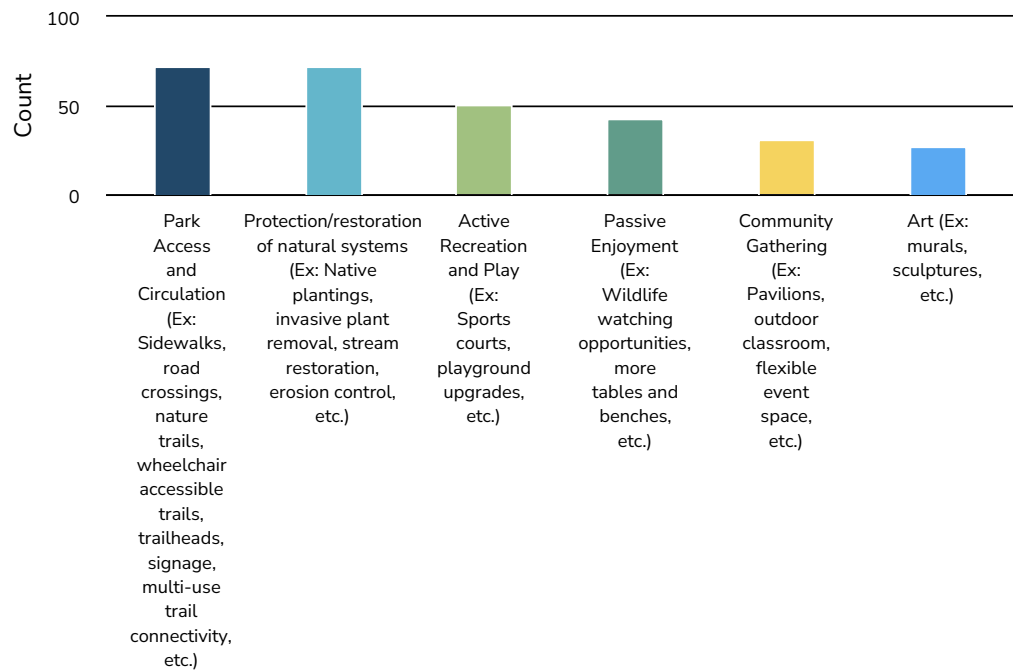
### 3. What would encourage you to visit the park or visit more frequently?

ResponseID	Response
9	If the park had more usable green space and amenities
15	Interesting amenities, sports courts, etc.
18	It needs constant attention - some of our friends leave trash - empty pint bottles , beer and soda cans on the ground - trash cans are not emptied on a regular basis - broken glass on the ground - becoming an occasional hang out for homeless - they may not be the ones leaving trash - this park is part of Shoal Creek at the corner of Dusty and Alston - where the gazebo is located - had to call the parks and rec to ask them to attend to the trash - they sent some folks out however they did not empty all cans or the dog waste can - (white oak hills resident) also there is a truck that parks on the grounds a couple of times per week - the gentleman sleeps in his truck
20	More well-defined trails, larger playground
29	Make it pleasant to walk through and fully accessible from Line Street.
32	More free time
33	More visibility. So many dogs in our neighborhood - a dog park would be a welcome addition.
39	Feeling safe walking solo on the trail
50	To take exercise
56	A safe walking path that leads to the park. A clean park. No loiterers in or around the park.
57	Community Garden
59	A) to make it more safe— better lights, updated sidewalks around there B) THE PLAYGROUND Updated! That has to be the saddest playground ever. We went with our kids and even they were bored, the playground was designed for adults – – over half of the playground equipment was so tall that the kids could not even reach it... We could barely reach it as adults! C) more common spaces
65	Better up keep
68	More inviting
69	An attached dog park
70	Add more to it. My kid doesn't want to go there, not as fun as other parks.

ResponseID	Response
71	The unfortunate fact of homeless folks and panhandlers is really not conducive to a stroll, especially as a female alone. Otherwise I would love to walk in the park.
73	Nature trails, bike path and active recreation opportunities.
75	Safety and a walking area with soft rubber material instead of concrete or and area to ride bikes.
80	More safety - these parks are known hot spots for crime. More walking trails, sport and fitness activities, areas for picnic, art and music festivals, less noise from memorial drive
84	I would like more walkable/bikeable spaces with activities for kids - more third spaces.
87	There is currently a homeless man living in a tent in the park. I called DKPD and they come out when there were 3 tents and the squatters left. One of them has come back and I have witnessed several people visiting him and smoking what I assume is crack cocaine. It's not safe to use the park at the moment.
88	Connectivity via walking/biking trail. Safety
90	I'm a senior citizen. I don't feel safe because I can't be seen from street level
91	Cleanliness. The times I have gone the playground has been dirty. Also it would be fun to have a little local art installation
92	Better lighting, landscaping, pavilions and trails, cameras
96	More safety, cleaner
97	If there were things to do(programmed activities like screen on the green) and more manicured areas with clear paths and if the stream was an amenity with native plants, gardens, paths, seating i would love it
98	Beautification efforts
103	I used to walk there a lot during pandemic. The construction lasted so long I kinda forgot about it. I like the trail and trees.
104	Less homeless population. Trash. Feeling of more safety.
105	Clear walking/biking paths, better landscaping.
107	Dog park, good lighting for evening walks, nature trails, recreation area for tennis, basketball, soccer etc
112	Ensuring it's safe. Sidewalks to get there would also be helpful (we live on the east side of Line St). Community events at the park.

ResponseID	Response
113	Connectivity to the bike paths in Kirkwood/Oakhurst/Decatur as well as general clean up (broken bottles, trash, etc.)
115	Better lighting, access over creek, brush removal, playground
116	Safety, cleanliness
118	Proximity to my house.
122	Events at the park. Jazz bands
133	Parking.
134	More things to see and do.
137	More amenities.
139	More signage. Community events. I've lived off line st for 7 years and have never been. It seems hidden. Maybe unsafe because I never really see anyone there except what looks like transients.
140	Paths that would allow strollers. Space for activities and sports.
142	Safety Seating Active recreation
143	It doesn't come across as particularly safe. More facilities may help.
144	Sports courts or walking trails
145	Dog park and pickleball
146	Increased safety
148	Outdoor workout equipment pull up bar etc...

4. What types of activities or features would you prioritize in Delano Line Park? (Select up to three)



Value	Percent	Responses
Park Access and Circulation (Ex: Sidewalks, road crossings, nature trails, wheelchair accessible trails, trailheads, signage, multi-use trail connectivity, etc.)	67.6% <div><div></div></div>	73
Protection/restoration of natural systems (Ex: Native plantings, invasive plant removal, stream restoration, erosion control, etc.)	67.6% <div><div></div></div>	73
Active Recreation and Play (Ex: Sports courts, playground upgrades, etc.)	47.2% <div><div></div></div>	51
Passive Enjoyment (Ex: Wildlife watching opportunities, more tables and benches, etc.)	39.8% <div><div></div></div>	43
Community Gathering (Ex: Pavilions, outdoor classroom, flexible event space, etc.)	28.7% <div><div></div></div>	31
Art (Ex: murals, sculptures, etc.)	25.0% <div><div></div></div>	27

Statistics

## 5. Tell us more about your selections above. What amenities have you seen at other parks that you would like to see provided at Delano Line Park?

ResponseID	Response
9	I would love to see an entertainment space such as a small amphitheater for music performances. A space for my dog to play and socialize. A community garden would be nice too.
13	A more cohesive playground and cohesive trails
15	Tennis Courts, shaded area with picnic tables, outdoor fitness stations
16	Interpretive signage to identify tree, plant, and animal species as well as stream ecosystem details. Water fountains with pet drinking wells. Easy-to-find trash receptacles. Creative/artsy trail markings. Creekside seating.
18	Just pls maintain what is there - doesn't help when the lawn cares mow over the trash
19	I love the idea of utilizing parts of Delano Line's different terrains/areas for different purposes. For example: using the forest trails for passive enjoyment of nature, while using the pavilion/playground areas for recreation/sports (a basketball court would be wonderful!), and using some of the open green areas for art installations, murals, community gardening, etc.
20	Again, more well-defined areas and less forested areas with low visibility
22	I think it would be cool to hold neighborhood events here. I would really like to see the county take more action in keeping the trees free of vines and the brush cleared and invasive plants like kudzu kept down. Of course I wish the water in the creek was cleaner, but I don't have high hopes for that. It would be cool to have some sort of a sport court available, skate park, tennis or basketball or baseball or pickleball would be cool. I wish there were perhaps lights at the pavilion at night time, as it usually attracts people hanging out late at night smoking and sleeping or drinking, which makes it less inviting to walk the dogs late or early. I think a community garden would also be super cool here. And I always welcome more art. I grew up in Decatur/Atlanta and it was always an eclectic place with so much to look at and while I love the neighborhood, it's a little bit bland for what Atlanta and Decatur has felt for me most of my life.
23	In typical fashion, Dekalb County, having absolutely no regards for Atlanta's canopy, removed what I estimated to be about 40 large trees. Unfortunately there is no quick fix but they must plant new trees. I also think it would be nice if we could paint the ugly new manholes with some cool murals depicting nature (not pop-art).
24	I'd like to see how the park is connected to the rest of the community. How parks and trails are connected. Have some signage suggesting paths, or a series of artworks to visits.

ResponseID	Response
25	I've been to other parks that have some sort of multi use trail for walking/biking that would be nice to incorporate.
26	PATH trail and a nice entrance
27	Increased accessibility and entertainment for kids (playground equipment, etc)
29	Natural growth & pollinators.
30	Tennis courts would be awesome if they were placed somewhere that didn't impede foot traffic.
32	More public art
33	More walkways. More lighting. Dog park!! Expand the small children's swing area to a bigger playground. So many kids and dogs in our neighborhood.
37	I would love to see tennis courts, and more playground equipment.
39	Better signage, planting of native plants
43	More ADA options. Power outlet for the gazebo and even more covered sites for gatherings.
46	Would like to see young (below age 5) specific playground equipment; pickleball courts; tennis courts, etc
48	Better and more accessible playground equipment.
50	Interesting plants
51	Bird feeders
56	Walking paths, upgraded playground equipment, well taken care of plants
58	Variety of seating areas and type of seating, creative way to engage with nature and plant life, interactive furniture, amphitheaters, kid-friendly play areas with shade over play equipment and seating areas, musical instruments.
59	Better playground!! there are so many good natural playgrounds with cool built-in features
61	I would love for the park to have something for everyone. Places for people to play sports, walk dogs, and enjoy their surroundings
63	Would love a fenced in area for dogs or even a full dog park. Basketball or pickleball court would be nice. Sufficient parking space.

**ResponseID    Response**

64	-fun playground area -natural space with more trails that connect to other larger trails w signage to PATH etc -sculptures and street art -common areas for sitting and hanging out -skatepark? -water feature? -vibe that attracts people; that gives others in our community a reason to check it out; that makes a name for the neighborhood
65	Mason Mill park trails, up keep, nature signage
66	Disc golf courses are something I have always enjoyed. Also walking trails are always nice. And both of those could be incorporated while protecting native plants/animals with minimal interruption.
69	Dog park
70	Playgrounds are just better and they have courts for the adults or older kids.
71	I would just like to feel safe walking in the park.
73	Bike and walking trails, as well as exercise opportunities. I would like to be able to exercise in the near by parks.
74	Playgrounds please. Tons of kids in the neighborhood
75	I just love a really safe and fun walking path. I like when the educate you on the trail as well about the local wildlife
76	I would like to see Benches and Tables and Grills and a area for the kids to play with a Trail through the Park.
77	Larger playground
78	the facilities are great, maybe have restrooms close to the gazebos.
79	It would be nice for there to be better access to the park from either the neighborhood, other trails, or even maybe the beltline train one day
81	Delano Line Park is a great buffer between Memorial Drive and White Oak Hills. It would be nice if it could just be restored and upkept for it's natural beauty.
82	More lighting for it to feel safer as it is dark early winter. Would love it to have nature trails(s) and also basketball or tennis courts (please no dog park
83	I like the access to nature. However, it feels a little empty and could use a clean up.
84	I frequently drive to Stone Mountain to walk on the nature trail. I also drive to Toy Park and Avondale Playground for 3.5 year old to play. Preferably a fenced in playground!
85	Wild garden; edible plantings. Upgraded play area.

## ResponseID Response

86	1 Bike Paths 2 Open Lawn Area 3 Kids Playgrounds
87	I am afraid that more benches or tables would attract more homeless to take up residence in the park.
89	Clearer entrance Easier access nice trails clearer path/trails well-marked view of creek signage
90	I'm most drawn to community gatherings and active recreation and play. Also paths for walking.
91	I really think it would be awesome for it to be more visible, or for their to be a more inviting entrance that encourages connectivity from the neighborhood/Line Street and also Memorial. The playground there is great but it would be cool to see that upgraded or better taken care of
92	I have seen more activities, trails, running tracks, better landscaping and lighting.
94	The park has a nice trail but needs regular maintenance and wayfinding signage. Development should be kept to a minimum to preserve its role as a noise and landscape barrier.
95	The park has a good trail linking its parts. Its usage as a cut-through means dumping happens there. Some wayfinding signage would be helpful as well. However, development should be kept to a minimum due to the park's role as a buffer. A ball field or open space might open the area to more noise. The area does need invasive plant remediation guided by a reputable organization like EcoLogic to design a sustainable plan and instruct users proper maintenance methods like cut and paint targeted herbicide application, "lasagna" mulching, and native replanting.
97	Public art, paths, and seating
98	Clear walking/running trails. Sunlight. It looks kind of dark and secluded. I didn't know it was kept up and open to the public.
99	Basketball courts. Trails. Picnic tables and pavilions
101	Repair drinking fountains. They worked at one time.
103	It's not a lot of space so I'm not sure you could add much more tables and art. Art metal sculptures. Tables to eat lunch. Ivy kills trees so getting rid of it would be great. Better maintenance of the trail enough rocks to cover the black pipe.
104	Benches near the streams, plant identifications, open sunny areas.
105	The playground is not well-maintained. There are sections w/ poor drainage and are often flooded, mainly on the designed paths.

ResponseID	Response
108	Playground Cleaner woods/stream
109	Would love to see more playground structure for the families in the neighborhood
111	Expanding the slate chip walking trails would be great.
112	A play structure would be fantastic. Would like to know the trails are safe and that it's easier to get to safely.
113	As someone who utilizes a bike to travel connectivity to other bike paths across memorial/candler is what I would like to see.
115	Lighting, access to trails, linking trail to neighborhoods
116	Playground upgrade like Mason Mill Park.
117	Invasive plant removal - particularly the English ivy - is of utmost importance. Would also like to see better maintained path, bridges, etc. 9 holes for disc golf.
118	More of a planned design landscaping-visibility from Memorial to discourage encampment. Due to location close to high traffic and the river, I think restoration and natural planting is a good idea- trails and art would elevate the space.
119	Also checked Active recreation and play
120	More opportunities for physical activity. Regularly scheduled events. Well-maintained pathways, a shaded area with benches.
121	A dog park
122	Also checked park access and active recreation and play.
124	It's clean and the walking path is nice. It would be amazing to have a pickleball/tennis court, as well as lighting on the trail. The walking path feels secluded and unsafe.
127	Would love to expand the playground beyond the swings. I like the idea of the path in the trees, and acknowledge the upkeep is not straightforward.
128	More walking trails, more park equipment, better protection and care of the area.
129	Sports courts would be a big plus
132	Sidewalks, safety
133	A few parking spaces for those of us in the neighborhood who live just a little farther away. Nice marked trails and support infrastructure. Natural area to view nature when on walk. Many makings use of natural water features to incorporate them into the trail. Maybe a bridge over the stream and benches to sit and enjoy the water feature.

## ResponseID Response

134	I like what Avondale Estates is doing, an Amphitheater, and outdoor covered space for music jams and farmer's /artist markets.
137	Playgrounds and open areas for kids to play.
138	Keeping the plants and wildlife healthy is key. More tables and benches would be nice. Keeping the trails maintained helps.
139	I have a toddler, so playgrounds are great. Pavilions with shade. And community events that bring people out.
142	More things to do.
143	It would be great to have community gatherings there. Currently there is no outdoor space to gather in our neighborhood.
145	Pickleball court fenced in single courts!!
146	Nice walking paths for families
147	I think the main need it to stop the sewer spills. The flooding, sewer spills and littering into shoal creek is the main concern that needs addressing before anything else can be improved with this area.
148	Work out equipment

6. DeKalb County is considering changing the name of Delano Line Park to better align with community identity. If you have a suggestion for a different park name, kindly share it below.

ResponseID	Response
9	Alexander Estate Gardens
13	White Oak Hills park or White Oak Belvedere Park
16	White Oak Hills Park for both sections.
18	No opinion
19	East Memorial Park
20	White oak hills park
22	I wouldn't mind a name change. The current name makes sense, but something a little more cute or catchy would be nice. No one knows where I'm talking about when I say I live I'm White Oak Hills (unless they grew up here), I always have to say East Lake or Belvedere Park, so Mayne naming it after our tiny pocket and having a sign on memorial would help put us on the map.
23	How about White Oak Hills Park?
25	White Oak Hills Park
26	White Oak Hills Park (1 or 2)
27	No
29	N/A
33	White Oak Hills Park
37	White Oak Hills Park!
40	White Oak Park Belvedere White Oaks
48	White Oak Park
50	White oak park
51	Delano Line seems fine, why change it?
55	White Oak Hills Park

ResponseID	Response
56	Southeast decatur park
58	White Oak Hills Park, but there's already a White Oak Park, so I'm fine with Delano Line Park.
61	No ideas
64	-White Oak Hills Park -White Oak Park -Wats Crackin Park -John Lewis Dekalb Park -St. Philip Park
66	I would love a name change. If there was an individual that could be memorialized in the park name, that would be good. Other than that, I am very open to a name change to something not as wordy and uninspiring.
68	N/A
69	Unless the existing name is offensive, I am not sure why the county would waste resources on new signage.
71	I like the name as is
75	Sunshine Park, Inspiration Park, Reading Park
76	GREEN ACRE PARK ON LINE ST.
77	White Oak Hills park. To go with the neighborhood association name.
79	n/a
80	Name it after a local who had been influential in the community over the years
81	White Oak Hills Park
82	White Oak Park
83	White Oak Nature Trail
85	Waste of resources.
86	White Oak Park?
87	I am fine with the park name.
88	Belvedere Greenspace. We are Belvedere Park neighborhood with much named that way
89	White Oak Hills Neighborhood Park

ResponseID	Response
91	Something to do with either Belvedere Park or White Oak. Or maybe we name it after Wayne Powell who's has been such an integral part of the community for so many years! Wayne's White Oak Park
92	East Line Park
94	This question is the first I've heard about a name change.
95	This question is the first time I've heard renaming mentioned. How will DeKalb County determine "community identity" when the neighborhood has been without elected representation for nearly a year?
97	White Oak Hills Park
98	White Oak Park
101	White Oak Hills
103	White Oak Hills Park? I'm curious about what the options might be.
104	Belvedere Park
105	Delano Neighborhood Park
109	White Oak Hills Park
113	N/A
115	Oak Forrest
117	White Oak Park
118	White Oak Hills Park
122	n/a
124	White Oak Hills Park
127	I'd call it white oak hills park but I think we already have one of those!
132	White Oak Park
133	White Oak Community Park
134	Unity Park
138	I like Delano Line Park

**ResponseID    Response**

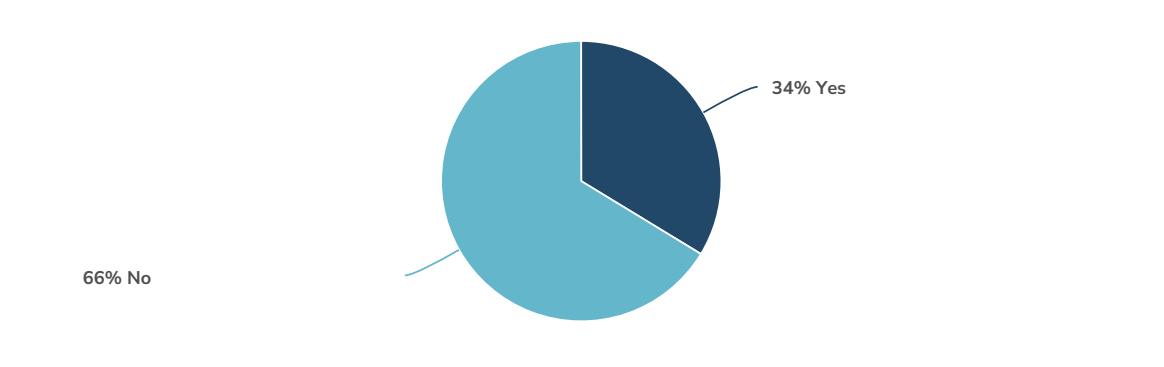
142                      Something to support the diversity of the neighborhood

145                      N/A

147                      This is the least of anyone's concern. Please don't spend time on this at all. There's already a nice sign. My tax dollars don't need to go to new signage or thinking about a different name. please think about the creek, the wildlife and pollution . Also there's a couple of homeless tents and prostitution but above and beyond those issues, are the chronic ongoing sewage flooding and pollution.

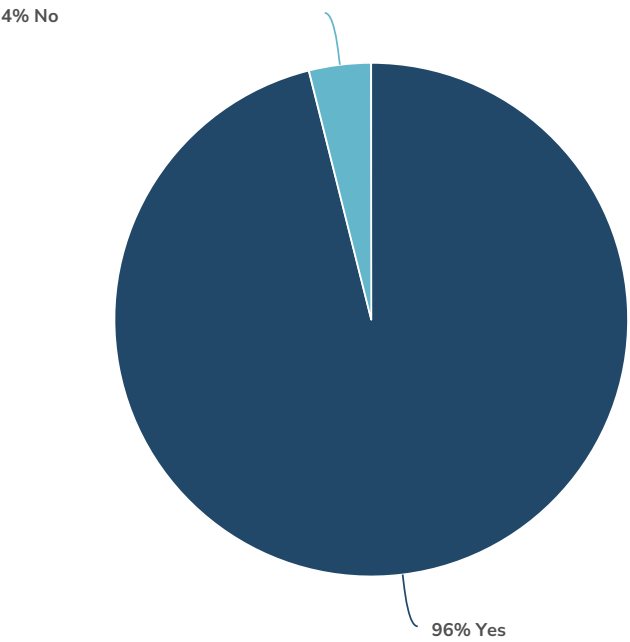
148                      Line Escapes

7. Prior to receiving this survey, did you know that White Oak Park is a passive, undeveloped county-owned greenspace?



Value	Percent	Responses
Yes	33.7% <div><div></div></div>	35
No	66.3% <div><div></div></div>	69
Totals: 104		

8. Would you use nature trails if they were added to White Oak Park?



Value	Percent	Responses
Yes	96.1%	99
No	3.9%	4

Totals: 103

## 9. How might White Oak Park benefit you and/or the community?

ResponseID	Response
9	It's more centralized to the community for gathering and will help beautify the neighborhood
13	It would give us a place to play and explore within the neighborhood. I think it might help strengthen community ties, especially if neighborhood events are held there.
15	It would create a space where the neighborhood and community can come together, play sports, exercise, have picnics, and just hang out with other neighbors in the community.
16	Connection around community events. Informal relationship connection among dog walkers and others who frequent its use. Continued buffering from busy roads. Healthy wildlife habitats.
18	Keep the growth down on existing trail that runs from the Gazebo on Alston and Dusty to Delano and beyond - also young folks are hanging in the woods after dark
19	Our community relies heavily on pedestrian access and public transportation. I firmly believing increasing accessibility and connectivity from all nearby corridors to the park (connection to PATH trail, Shoal Creek Park I, MARTA, Memorial Drive, Line Street, Candler Road, Glenwood Road, etc), while also investing in safety features for all! (Lighting, signage, emergency call box, etc).
20	More welcoming to the neighborhood occupants, less unsafe loitering
22	We use this park daily. We already benefit, but I think for the community it could give us more visibility, give us a chance to show some personality, and be a gathering space.
23	Provide a better buffer between Memorial Drive and the neighborhood. When DK removed all of the large trees the sound from traffic and the lights from the storage center have become much more pervasive.
24	Create a buffer from the traffic on Memorial and offer a safe quiet place for people to enjoy time outside.
25	Offer a space to connect more with nature
27	Increased access to nature
29	Additional space to walk my dog without having to dodge cars.
30	More opportunity to meet our community.
32	A safe space for gatherings and community
33	Bring my child and dog

ResponseID	Response
36	Dog trails
37	a closer option for me and allows others in the vicinity the chance to enjoy nature!
39	Provide additional areas for walking and recreation
40	Have a nice place to enjoy the outdoors
43	Allowing people to walk safely around the park and wooded area would be great for the White Oak residents. Great for physical activity and for our 4 legged friends.
46	More outdoor spaces improve health, community involvement/pride, and promote this as the place to live
48	Community space and pride. Great entrance to the neighborhood on Delano off Memorial.
50	As an education resource for native plants
51	I love to walk in nature.
53	Get people out and moving
57	Community garden
58	Access to nature and trails.
59	Right now, it seems to be a hang out for people who would not be safe for our kids to be around... It would be great if it could be a place that draws the entire community together and become safer!
61	It would be very beneficial to have more places for our neighbors to enjoy all our neighborhood has to offer! Trails for walking dogs is safer and more enjoyable than walking on the street, having play sets can bring families and neighbors together, and it allows another gathering spot.
64	I'd love for it to be an attraction and selling point for our community. I'd love to be able to walk down from my house to a beautiful, safe, clean park with my young children or throw them a birthday party there instead of always having to drive to some other area. If it is well maintained and well lit it may cut down on the people who need county services and not to hang out all day under the gazebo.
65	Shared greenspace
66	Any additional green space would be very welcome. A lot of people in the community, myself included, are frequently walking around, however there are not many sidewalks in white oak hills, having a safe and enjoyable area to walk would be very beneficial.
68	The more parks the better

ResponseID	Response
69	Leave it alone, there is no benefit to cutting down those trees; the space is oddly shaped, and there would be no place to park. It's a terrible idea from start to finish. Invest in Shoal Creek Park I - there is so much space that can be better utilized, without altering the character of the neighborhood.
70	Bring us more together
71	I would love a walking park nearby especially since the Beltline is inconvenient to get to, Actually a connector to the Beltline would be tremendous.
72	A place to destress, be in nature, and relax.
73	I do not have a lot of time in the day, so to be able to use the park to for my exercise routine and be in nature- that would be great.
74	Nature trails would be great exercise for my family
75	It would help me be more active.
76	It would benefit me and the Community because it would be a great place for the Family and People of all Ages to Enjoy
77	Family time
78	To have a place to walk and run close to home
79	Having a safe place to walk around/jog for some exercise would do wonders for the community.
80	It would be incredible to have a safe, nice, park that is walking distance to so many members of the white oak hills and belvedere park community.
81	It's nice having a place to go to commune with nature close by.
83	Being outside brings folks together and promotes healthy living.
84	More nature and third spaces for the community.
85	Walking/biking trails; off-road/mountain biking particularly.
87	By monitoring it for people living in it.
88	Walking trail along creek would provide respite. Expansion of current use as informal dog run area.
89	Beautification trails and walkways public access outdoor enjoyment in nature

## ResponseID Response

91	I would love for this to be a free space with trails and an area to look over the creek kind of like how Dearborn is. S little pocket forest so to speak.
92	It would provide a safer and community driven park for the neighborhood. Many residents walk and this will provide a safe space and community endorsed environment
96	Exercise, community building, accessibility to nature
97	Be an active and passive walking parh
102	Added greenspace for kids and dog walking
103	Green space is necessary for the community. We need the trees and shade.
104	Safe, natural walking trails would be a great alternative to street running
105	It would encourage neighbors to enjoy the additional greenspace.
107	Not all neighborhoods in this area are walkable due to not having sidewalks. It would be nice to walk somewhere and meet people in the community.
108	Playground and trails
109	Allow for more outdoor community usable space
111	The ability to occasionally escape the city by being in nature helps ones mental health.
112	I had no idea it was there, so we've never explored it. Driving by, having all of the invasive plants removed & stopping the dumping there would be fantastic. Would love to use it for walking/greenspace.
113	A non car dependent gateway to other communities
115	Place to gather, meet neighbors, dog play area
116	Clean it up with more paved road so people can take walks. Also need to be well-lit, safety is the main reason we don't go out for these amenity.
117	More space to enjoy the outdoors and meet new neighbors. Plus tree preservation!
118	I already love walking the dog over there. We would love a park.
120	Physical activity, social interaction, relaxation, community events
121	Having a dog park and deer walking trails

**ResponseID    Response**

124	Another gathering place to have community events and allow children to be outside safely.
128	Any outdoor space designed for recreation/enjoyment is a positive feature for the community.
129	Another third space for people to hang out in or participate in activities in is nice.
132	Place to get outside with neighbors and exercise while enjoying urban nature
133	Provide the community with walkable green space and the ability to access and enjoy the natural water feature (Shoal Creek) running through our community. Also to allow clean up and restoration of this water body.
134	Gathering spaces can provide children and adults a place to meet and get to know their neighbors. This could be a big promoter of mutual understanding and a closer community.
138	A nice place to gather and take the family for a day outside.
142	Gathering place But needs to be safe
143	I live in the White Oak at East Lake townhomes, and our community shares over 500 feet along the parks eastern boundary. Our residents would definitely benefit.
144	It would help people to be more active if they had options of walking trails and sports courts
145	Nature trails and natural wildlife
146	I live on white oak drive and my family would enjoy more green space!
147	It benefits me as I walk my dogs there almost every morning. There's not a lot of green space around. This is an essential green space.
148	A change to make all neighborhoods connect with activities. KEEP HOMELESS OUT PARKS FROM SETTING UP TENTS!

## 10. How would you feel about at White Oak Park being opened for public use?

ResponseID	Response
9	I would love it
13	Sure. I mean, right now we drive all over to utilize other neighborhood parks that allow us to visit. Why not extend that same hand to others beyond our neighborhood.
15	Very good
16	Minimal activation through a natural trail might encourage stewardship. I have some concern about out-of-sight abuse of the space (litter, graffiti, drug use).
18	Apparently it already is and that may be part of the problem
19	I would enthusiastically be in support of this! I think it's a unique space that could be utilized for long overdue beautification to the corridor, as well as an opportunity to invest in local artists to create permanent installations and spaces for the public to relax.
20	Great
22	Absolutely, all parks should be opened for public use in my opinion.
23	Sure as long as the park at Delano/Dusty Lane is not turned in to picnic areas. The park just down the street at Alston is fine for local gatherings. Keep the park at Delano/Dusty strictly for nature.
24	I would strongly be in favor of that.
25	Open to public use.
26	Not a problem with it as long as there is safe pedestrian access
27	As long as increased safety measures are implemented, I am happy with that.
29	Wouldn't be a concern
30	As long as the park is maintained, I feel positive.
32	Indifferent
33	As long as people or respectful of the space
35	It should be
36	Happy but needs to be safe

**ResponseID    Response**

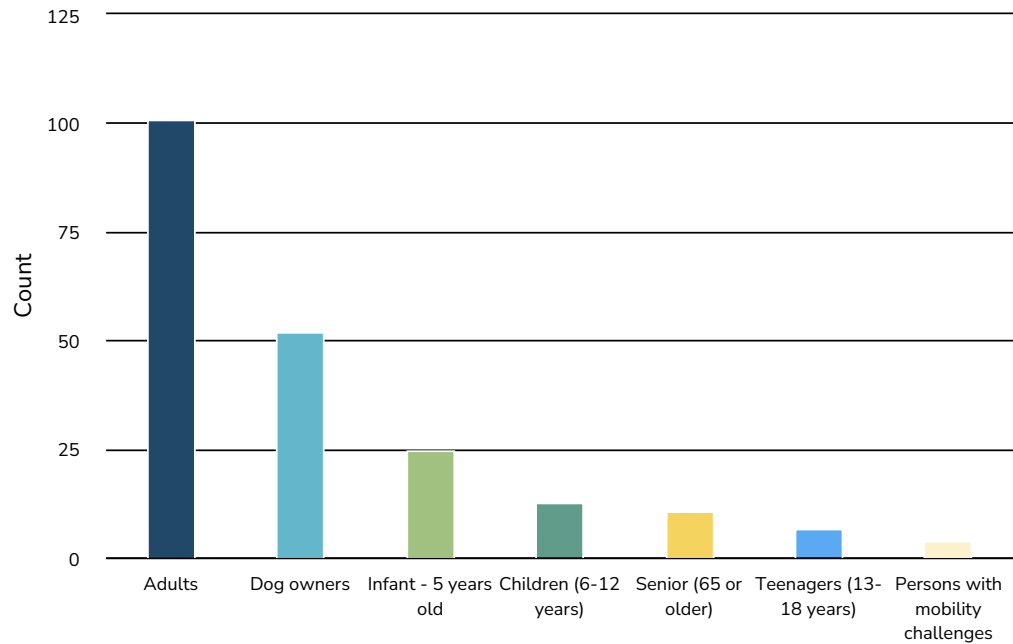
37	I feel good, however SAFTEY is a big concern! With trails comes lack of visibility. I would think of ways to make the trail safe!
39	Positive
40	That would be fine
43	I was unaware it wasn't open to the public?
46	If it is public, it should be accessible to the public.
48	Ok
50	Welcome this
51	Great idea!
53	I have no problem with this
57	Good
58	Good
59	Isn't it already?? If not, it should be! As long as it does not become overdeveloped, the trees and foliage is retained, the kids who is cleaned up along with the trash, I think it'll be a beautiful natural preserve for the public to enjoy!
61	I would love it!
63	Would prefer it
64	I don't know what this means. It is public now isn't it? Like people from anywhere can come there, right?
65	Good
66	I would love it! I mostly use Delano line park or walk further over to shoal creek park 1/2. This would give me a closer green space to enjoy.
68	Favorable
69	I would see to it that everybody who had something to do with cutting down those trees would be looking for another job.
70	That's fine. I use other neighborhood parks because they're better than ours.
71	I thought it was!

ResponseID	Response
72	Great. I thought it was open to the public.
73	If Dekalb County taxes pay for the park, all Dekalb County should be able to use the parks.
74	Good
75	I would prefer it not be for public use.
76	It's a Great Idea
77	I agree for public use
78	Would love it
79	As long as it is well maintained, so it doesn't get trashed, I wouldn't have a problem with that. We should encourage people to respect the space by ensuring it stays nice. When things are broken or have trash everywhere, it sets a certain expectation of how it should be treated.
80	Love it!
81	Fine
84	Would LOVE IT!
85	I would like to see it remain a mostly natural area.
86	Great!
87	It is right in front of my home and there isn't parking available so not sure that I would like more traffic. Line St. is already a cut through street and has lots of traffic.
88	Mostly good. Some concern about my neighborhood...white Oak At Eastlake townhomes. Will there be a fence? A gate. The park is currently direct access from within the community but through the land closest to the creek which is owned by a third party property owner and not managed by the HOA. Safety concerns
89	Yes please, did not know it existed
91	Yes! It would just need to be cleaned and maintained as there is often a lot of litter and dumping that happens on that corner
92	Great
96	Depends on the safety and clean up. We already have parks in this neighborhood with a lot of trash, broken beer bottles, shooting of guns, etc.

ResponseID	Response
97	Love it
98	Okay as long as it is protected and safe
99	Great
102	In favor
103	If the trees remain and it stays natural, great. I don't want it to be over-developed or stripped of trees.
104	As long as it was kept clean and safe I think it would be great.
105	I'd love walking trails right here in our backyard
107	I think that's great! Parks should be shared and used by all
108	Fine
109	No opinion
111	As long as it's kept clean I have no problem with it but I would not want to see it turn into a homeless camp.
112	Depends on what it's used for, what is meant by "public use." I'm all for keeping it a greenspace, but let's make it one people know about and know how to use that is kept clean and safe.
113	Good
115	Not aware that it is used now. Wouldn't mind it.
116	Open to it. But need to deter people from sleeping in the park or doing illegal activities.
117	With clear community guidelines for use and appropriate resources for park cleanup and upkeep, White Oak Park can be an asset to the entire community
118	Just fine, why not.
120	I would love community events in the park
121	How would it be accessed? Will that access be limited to people outside the gated community of White Oak at East Lake (townhomes)?
124	That would be fantastic!
127	Honestly could not locate it without Google! Don't know much about it.

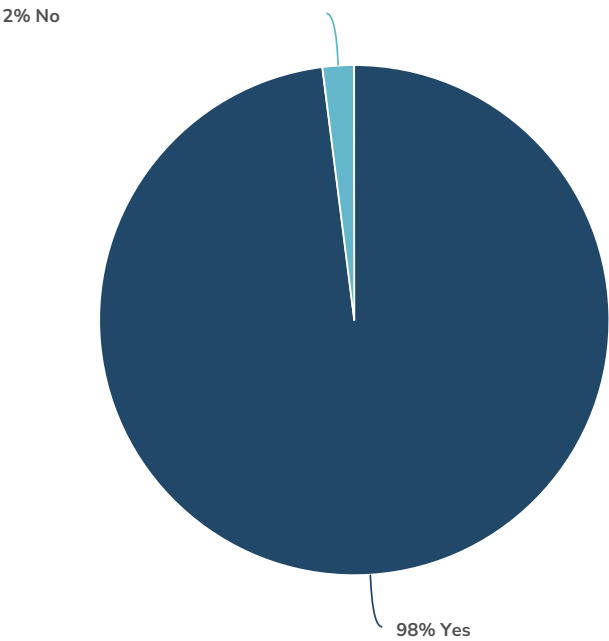
ResponseID	Response
128	I'm fine with it being public
129	Yas
132	Great-as long as it is safe
133	I feel the more people and know about the park the better. No sense and making a park that no one knows about or uses. That being said the park design should incorporate safety features . Appropriate lighting, waste receptacles, and coordination with law enforcement and code enforcement to discourage squatting and homeless encampments.
134	I would be in favor of it as long as parking was included in the plan, so that it would not become an annoyance to the residents surrounding the park.
137	I would love this
138	This would be good as long as it is regularly maintained.
139	Not sure why it isn't
142	Good
143	Sure, I'm ok with that. I would want input on the boundary between the park and the townhomes. Strongly advocating for a fence.
144	That's perfect
145	Great!
146	Would love to be able to use the park!
147	Yes any maintained green space in this area is a positive! Especially after the clear cutting disaster at the top of memorial drive between Conway and Thomas. So much Natural habitat destroyed and flooding exponentially increased. We need more green spaces that can help naturally with the flooding in the area and help restore natural habitat.
148	Ok if the homeless follow the rules

11. Who is in your household? (Select all that apply)



Value	Percent	Responses
Adults	97.1%	101
Dog owners	50.0%	52
Infant - 5 years old	24.0%	25
Children (6-12 years)	12.5%	13
Senior (65 or older)	10.6%	11
Teenagers (13-18 years)	6.7%	7
Persons with mobility challenges	3.8%	4

12. Would you like to see Delano Line Park and White Oak Park connected to the county wide multi-use trail system?



Value	Percent	Responses
Yes	98.0% <div><div></div></div>	100
No	2.0% <div><div></div></div>	2
Totals: 102		

13. What else would you like to share with us about Delano Line Park and/or White Oak Park? Feel free to expand on your previous answers or share something we didn't ask about or share something new.

ResponseID	Response
9	Both are needed on the area especially greenspace in urban areas. It just adds to the overall quality of life.
13	I would like the park to not have the same kind of safety issues (constant gunfire, dead bodies) that Shoal Creek park I and II have had. Not sure how to avoid it, but that's very important to me as we have a child.
16	Creating natural barriers to prevent unauthorized parking or vehicle access to the park is vital. Pay attention to where that's happening now (Dusty at Alston especially) to design appropriate remedies. Creekbank restoration and preservation are important. Providing some access to the creek (a seating area perhaps) would generate interest for pet owners and visitors with children.
18	Let's first maintain what we have would her if Dekalb folks in Blue drive buys at night - let's get the clean up crews out to get the broken glass cleaned up
19	Our neighborhood is very active, but also isolated from nearby existing trail networks/systems. Connecting Shoal Creek Park I to Delano-Line/White Oak Park, as well as pedestrian/biking connections to East Lake/Kirkwood, Downtown Decatur/Oakhurst, East Decatur Greenway, and Belvedere Park would be a major asset to the community and encourage neighborhood participation!
22	To bring back question 11, I would LOVE if the park connected to other parks, like East Lake or Deerwood, via a multi-use trail. That is one thing we are majorly lacking. I would 110% bike more if it were safer to cross Memorial and Candler. People use both (especially Memorial) at highway speeds so it feels incredibly dangerous to cross. If a light were added to slow traffic or a road diet created and a crossing trail with lights for pedestrians and bike riders were created to link us to the other sides coming from the park, I truly believe more neighbors would use it to access Legacy Park, and the other trails and parks around. We are stuck in an unsafe little island, and using our park to link up is a massive opportunity.
23	Native trees and other sustainable plants, and general site clean-up would be nice. I can't believe DK wasted money on planting sod to prevent erosion. It will be nice to see some professional creative ideas.
25	Save the mature trees.
26	Please, please save the trees by taking down the ivy .
27	We don't utilize these areas as much as we should because of safety concerns. We don't go to playground equipment near us because we've seen drug use and hazards. Safety and cleanliness are our top priorities.

ResponseID	Response
29	N/A
30	I would love walking paths or landscaping that enhances the parks appearance. Right now there's that crumbling wall that is a bit of an eyesore the overgrown edges of the park that could be cleaned up
33	Any chance to put a community pool (paid membership)?
37	I think the biggest problem in these parks is crime! The best thing Dekalb can do is take measures to make the community feel safe to use these awesome parks!
39	As a woman, I don't feel comfortable walking alone or alone with my child within the park. I'm not sure how to change that, but perhaps with better signage and increased community use it would feel safer for me to utilize
40	I would like the ivy and kudzu removed and some flowering plants added
43	The garbage pick-up is inconsistent. I've seen weeks go by and no garbage pick up.
46	General improvements, promotion of events (clean up, general community events, seasonal events), and connections with Shoal Creek would be great
61	I think having these parks in the neighborhood is a huge draw! I really enjoy utilizing any provided public space nearby
64	Often there are unhoused individuals hanging out all day and presumably night. This is a difficult and sensitive situation of course, but obviously doesn't encourage community use for families and local businesses. We're so lucky to have a nice trail and park so close to our homes but it often doesn't feel safe or clean. To change that would be a huge upgrade for the neighborhood. I don't recommend eliminating the plant barrier blocking large portions of the park from Memorial Drive at this time. I know Memorial is evolving too, but it is still a busy street and it's nice to not see it all from the park. A few little like right before line are nice haha.
66	I think it would be great to have a path that connected white oak park and Delano-line if possible. If shoal creek does not cut into homeowners property, a small creek side path connecting the two would be so big. I understand the hurdles there and it may not be possible.
69	Leave White Oak Park alone.
76	Whatever you decide to do with the Park it will be great to just enjoy the Park
77	Improve safety and cleanliness of white oak park specially
83	I think parks are always a good thing, they bring the community together. However, maintaining the park is important

**ResponseID    Response**

84	We moved to Decatur/Belvedere Park in 2020 from VA Highlands and I feel like I drive constantly compared to going days without using my car. I would love and appreciate more accessibility to that, that's safe. I want my son to grow up in a non-car dependent space.
85	I would love to see a simple foot bridge in the right-of-way from Carter Rd to Shoal Creek to give Belvedere Park walking access to the sewer ROW and White Oak Park.
87	I would love to be able to use the park to walk my dog but I don't Feel safe doing that at the moment.
88	The connectivity of these parks to Shoal Creek Park 1 runs right along the townhouse development. Many of us were told of older county plans to create a trail along the creek. That could be lovely. But also no plans have been shared about fencing.
89	accessibility connect to existing resources like community walking group signage preserve nature dog walking dog park poop bag stations trash cans benches, swings, picnic tables
91	I love this neighborhood and connecting these parks up to Dearborn, Shoal Creek, and others in the area would be awesome.
103	I think that maintaining green space and offering trails is most important. Places to sit and enjoy nature are nice too but not at the expense of decimating nature itself.
105	I wonder why I never see any children playing there. The playground is always empty. Don't ever see folks hanging out, waiting for the bus.
109	We love having this space in the neighborhood!
112	We need safer ways to get to the parks & greenspaces in our community. There aren't sidewalks or speedbumps, and all of the hills with cars going >40mph (instead of 25) make it hard to walk to places safely - especially with children and dogs.
113	These parks seems like a great opportunity to connect the neighborhoods surrounding these parks to the broader network of bike paths throughout dekalb and Fulton county.
116	Need more maintenance and more well-lit system around. We are scared to use these parks because we don't feel safe letting our children play there. You see used condoms and litter around. Not a kid friendly park.
121	Interested in seeing plans for White Oak Park since we live in the townhome community.
124	I'm not familiar with White Oak Park so I can't speak to that. Delano Line Park again feels secluded and unsafe. Perhaps opening it up more would be helpful, though I'm sure many would prefer not to lose trees. A court to play games on would be nice. It's a great space that I don't use because the rear neighbors on Alston seem sketchy.

## ResponseID    Response

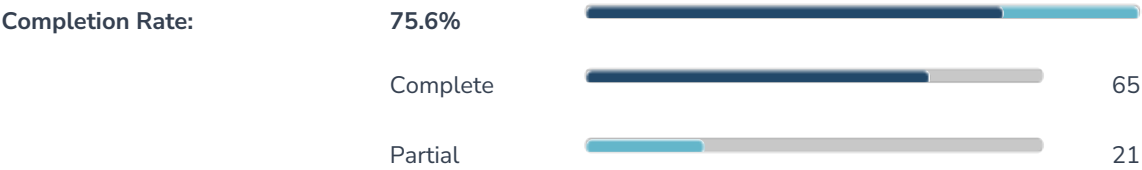
132	We Love delano park and appreciate those working on this project. We (my children and I) don't always feel safe walking on the trail-even though I love it, because of its proximity to memorial and the unhoused population that frequents there, as well as the prostitution that happens on Delano and Line Street. Would love to see safety be a priority when thinking of how to improve the parks and encourage more engagement from the community.
133	Dog waste receptacles would be nice if incorporated into the trail head along with trash cans spaced out periodically through out the park to discourage littering.
138	There are stairs and bridges in Delano-Line Park that need to be repaired. I would like to see the maintenance improve, especially since the park was torn up so long for sewer line repairs/
147	This area is highly polluted by sewer spills and littering. I still walk here but is it really safe to walk here with my dogs after thousands of gallons of sewage have spills into the creek? I would say the main focus should be fixing the sewer, and building up natural habitat barriers to help support the creek cleaning so that maybe we don't have to apply lemonex III in areas where you hope to encourage recreation and public use. Let's clean up the literal shit first and stop getting fined by the EPA. And spending tax dollars on sending crews out to put up yellow signs(that also aren't cheap) with incomplete information as to the response or amount of spillage.

15. I would also like to sign up for the White Oak Hills Neighborhood Association email list.

Value	Percent	Responses
Yes, I would like to sign up.	69.5% <div><div></div></div>	66
No, I would not like to sign up.	30.5% <div><div></div></div>	29
Totals: 95		

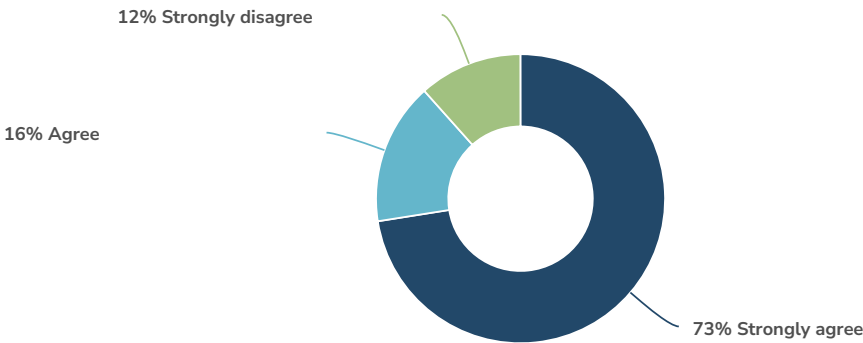
# Report for White Oak Hills Neighborhood Parks Preliminary Concept Feedback

## Response Counts



Totals: 86

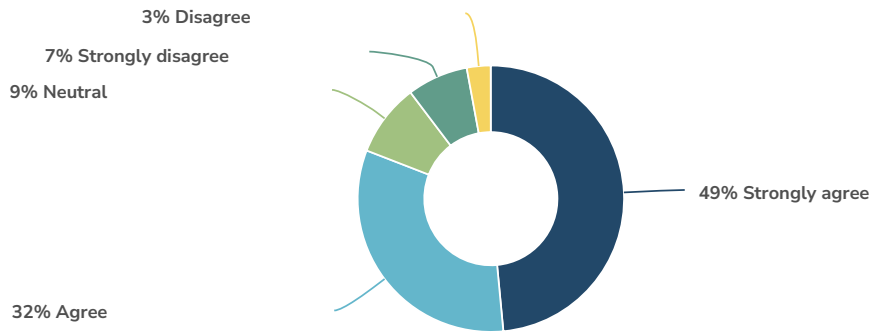
1. Provide a safe, inclusive, and accessible space for respite in nature, environmental stewardship, and neighborhood connection.



Value	Percent	Responses
Strongly agree	72.5%	50
Agree	15.9%	11
Strongly disagree	11.6%	8

Totals: 69

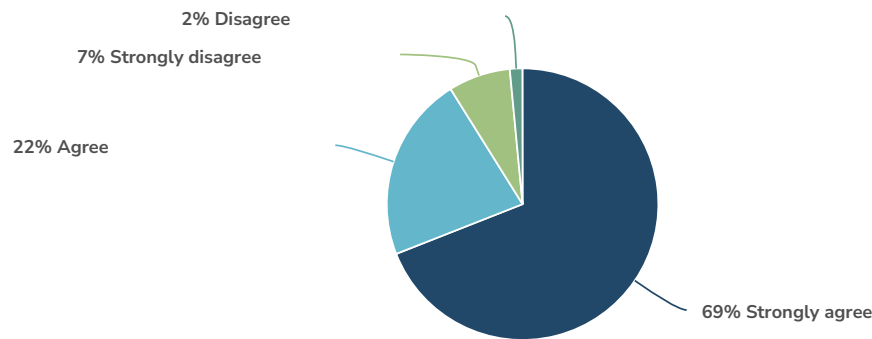
2. Establish park identity through highly visible park entrances and a variety of trails with clear signage and trail markings.



Value	Percent	Responses
Strongly agree	48.5%	33
Agree	32.4%	22
Neutral	8.8%	6
Strongly disagree	7.4%	5
Disagree	2.9%	2

Totals: 68

3. Promote maintenance practices and neighborhood involvement that preserve natural ecosystems, control invasive plants, and protect park infrastructure and amenities.



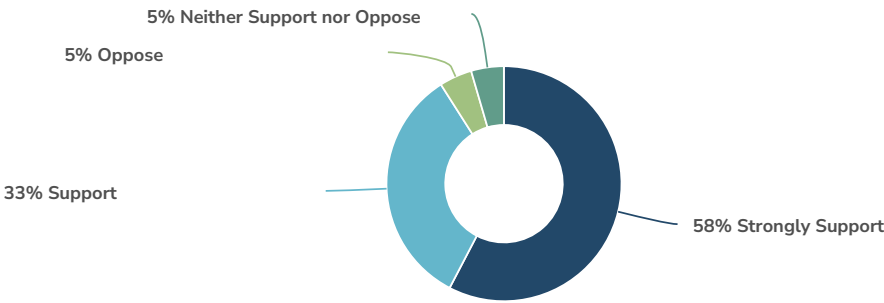
Value	Percent	Responses
Strongly agree	69.1%	47
Agree	22.1%	15
Strongly disagree	7.4%	5
Disagree	1.5%	1

Totals: 68

#### 4. Provide any additional comments here.

ResponseID	Response
7	A focus on accessibility, connectivity and public safety!
9	Consider changing order for first guiding principle
24	This all aligns with the principles of White Oak Hills.
33	Embracing native species of plants to attract native animals and native pollinators.
35	DeKalb County plan for trail connectedness will need to go through a private HOA from Shoal Creek Park to White Oak Park. We need a commitment from the county that the trail would not adversely affect the safety of these homeowners. Definitely in favor of a locked gate at the border of the HOA and the park.
37	Current park maintenance is sporadic at best!
40	I jog through the existing parks off dusty-delano-line on a regular basis. My feedback is that A) we already have a park/swing equipment in place in one location - is there a strong reason to move this rather than revamp it? The existing location is high/flat ground and accessible. B) We need a dog park. Many people already use the space for illegal off-leash activity and I think they will continue to do so unless given enough space for large dogs to run. I suggest fencing in a large section of the lower part of the park that is already used for this rather than the small proposed space where the homeless camps are.
47	Provide an enclosed small turf soccer field. Maybe Atlanta United could add capital for this aspect of the park. Like the small one they have East Lake Marta station.
50	Cameras would be helpful
55	Big fan of this. Strongly in favor of some disc golf and am happy to donate my time and money to help with this park in any way needed. Also huge fan of the dog park though my only suggestion would be potentially considering a different area for that as Memorial is a very busy road. Love the idea of adding a small playground closer to Candler as well since the one next to Line st. is a bit of a hike from that part of the neighborhood.
59	Safety
67	DeKalb County Parks and Recreation needs to take on more responsibility for the maintenance and care of county spaces. Community members can and should have some involvement, but at the end of the day, our taxpayer dollars should be at work in these parks, and currently, all that is being done is mowing. Our community efforts should receive a balance of effort on the county side of the scale.
78	Im not sure of the importance of signage and highly visible entrances.

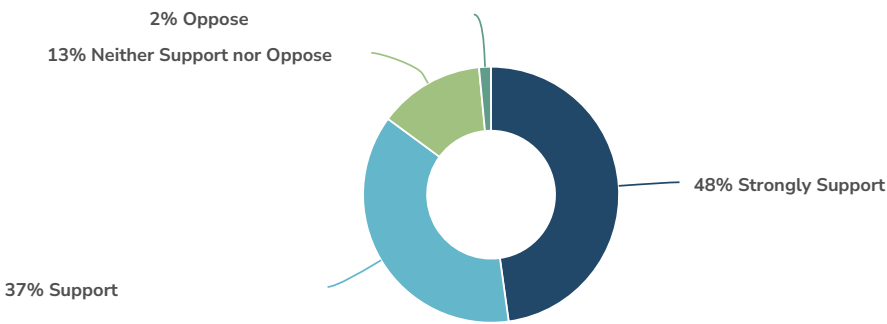
5. Unpaved nature trails are proposed in forested areas to provide better access to nature.



Value	Percent	Responses
Strongly Support	57.6%	38
Support	33.3%	22
Oppose	4.5%	3
Neither Support nor Oppose	4.5%	3

Totals: 66

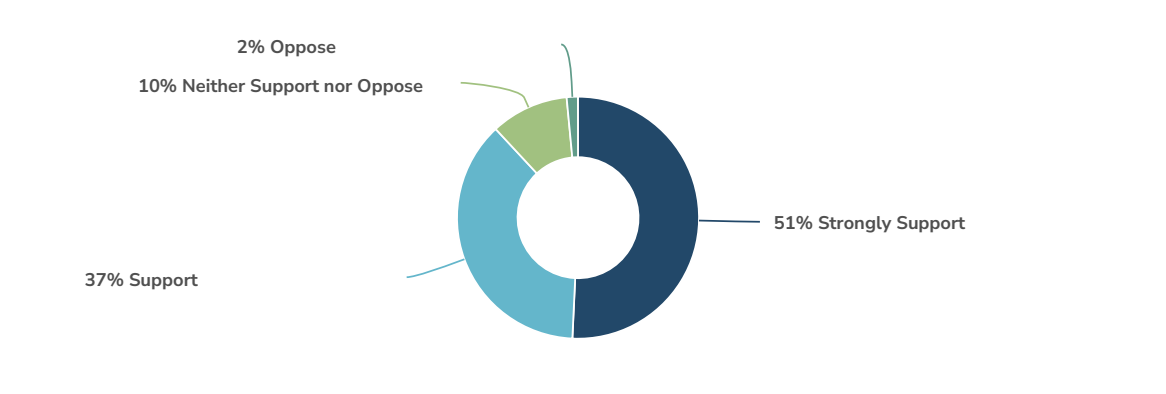
6. Asphalt walking trails connect park entrances with major features within the park and enhance accessibility.



Value	Percent	Responses
Strongly Support	47.8%	32
Support	37.3%	25
Neither Support nor Oppose	13.4%	9
Oppose	1.5%	1

Totals: 67

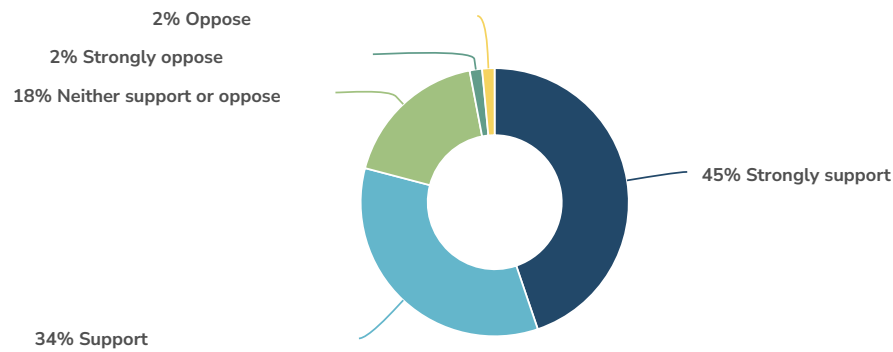
7. Updated playground equipment and improved design for the playgrounds at each end of the park.



Value	Percent	Responses
Strongly Support	50.7%	34
Support	37.3%	25
Neither Support nor Oppose	10.4%	7
Oppose	1.5%	1

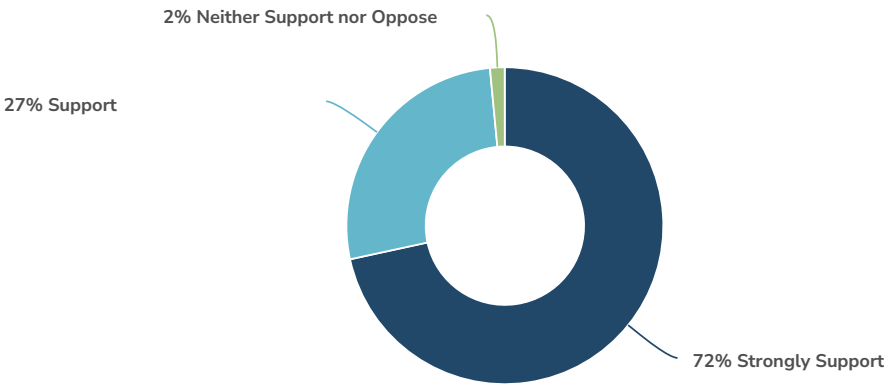
Totals: 67

8. Consistent park entrance design to help establish park identity.



Value	Percent	Responses
Strongly support	44.8%	30
Support	34.3%	23
Neither support or oppose	17.9%	12
Strongly oppose	1.5%	1
Oppose	1.5%	1
		Totals: 67

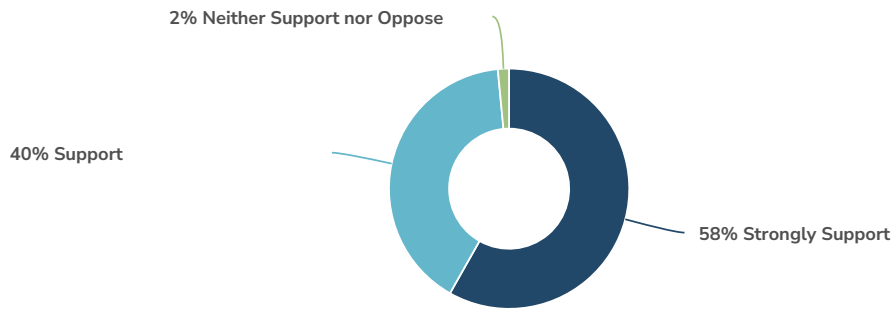
10. Invasive plant removal in both parks along with targeted areas of landscape beautification.



Value	Percent	Responses
Strongly Support	71.6%	48
Support	26.9%	18
Neither Support nor Oppose	1.5%	1

Totals: 67

11. Added site furnishings like bike racks, benches, waste receptacles, and picnic tables.

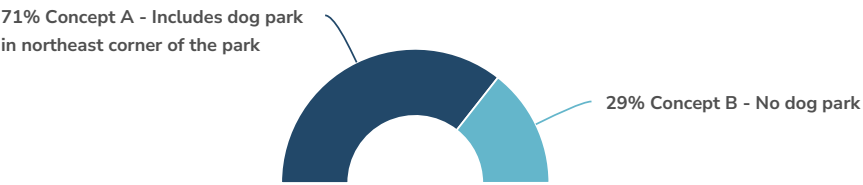


Value	Percent	Responses
Strongly Support	58.2%	39
Support	40.3%	27
Neither Support nor Oppose	1.5%	1
Totals: 67		

## 12. Provide any additional comments here.

ResponseID	Response
7	Continued regular maintenance to preserve the old oak trees in the trees by removing invasive vines, and also regular litter/trash pick up in the parks to make it safer for all!
22	Regarding improved playgrounds at each end of the park, I prefer the portion of the plan at the end of Dusty and Alston that maximizes tree preservation at that spot. Regarding paved versus unpaved path, I like unpaved just fine. The current path in Delano Line is lovely but needs drainage support.
24	Add as many traffic calming options as possible! This will help with park visitors and pedestrians feeling safe.
37	Current use of park Delano and Alston is often abused by outsiders non neighbors eg trash and litter , cars parked on sidewalks bordering park, broken glass in several areas, tire dumping etc
44	We also want to make sure the park feels safe!
56	This should be an inviting area. Not only that there needs to be trashcans along the paths.
61	Minimise tree removal. I'd rather the amenities be smaller if the trees were able to remain.
66	Love Love Love the disc golf concept. This also gives the adults some areas to play as well. Geat idea!
67	Again, the County should be held accountable to the maintenance of these parks. If the vision plan is implemented, the County needs to communicate well across departments so that watershed, drainage, and other infrastructure plans are implemented in the correct order. Those of us on the other side of Line Street on the Shoal Creek Park side met with Park pride and DeCamp county Parks and Recreation during our last visioning meeting. We discovered that Parks and Recreation had demolished brand new playgrounds at Shoal Creek 2 Park because they mistook them for picnic pavilions that were supposed to be demolished and replaced. County communication is a disaster, and waste is abounding. Another example of how the county operates that they had no idea that they should tell us when the sewer project would be occurring in Shoal Creek Park 1 so that any other work done would not be undone when the watershed project came in. The county had no timeline for when the watershed project would occur in that park, so we had no idea if and when DeKalb County would approve and do the work that we had Proposed through the Park Pride visioning in relationship to the watershed timeline. DeKalb County has no communication among departments and is very likely to mess up these processes, if thorough oversight is not provided from the community and county commission.

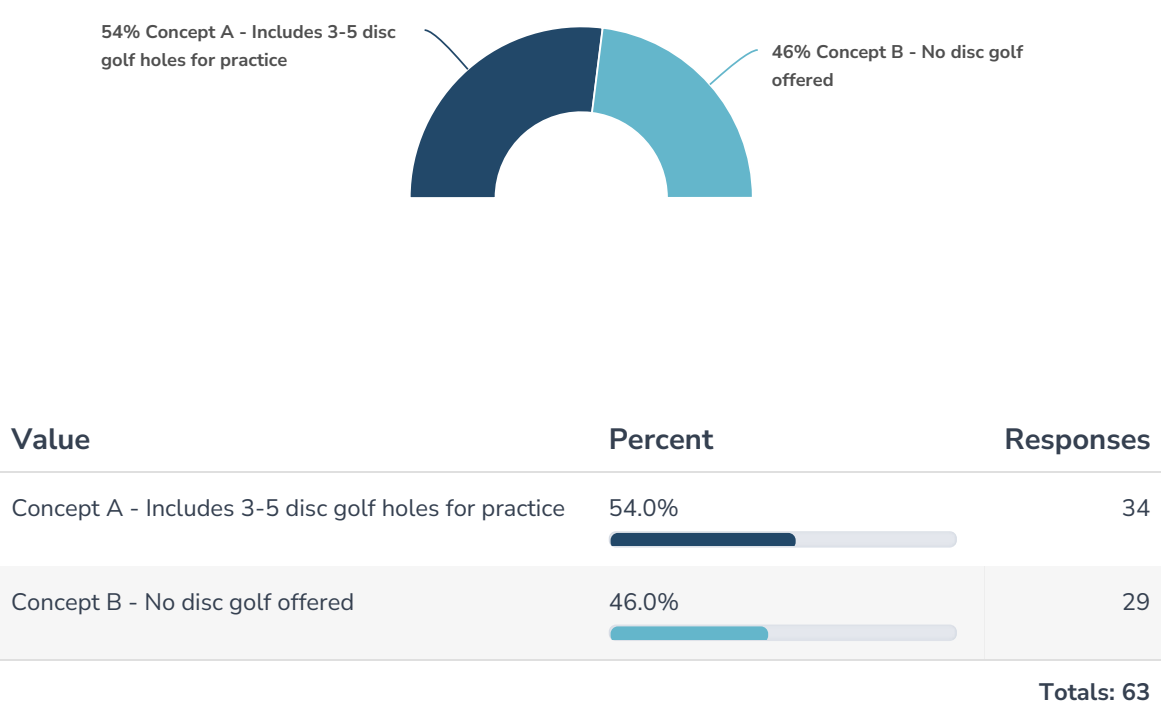
### 13. DOG PARK: Do you recommend an off-leash fenced dog play area in Delano Line Park?



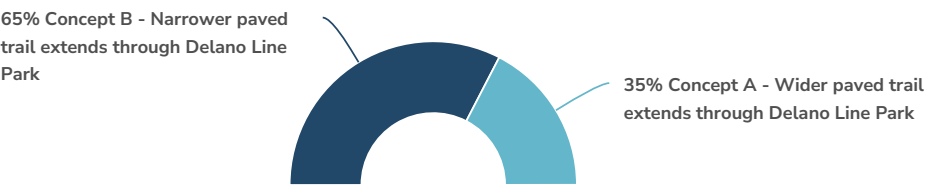
Value	Percent	Responses
Concept A - Includes dog park in northeast corner of the park	71.2% <div><div></div></div>	47
Concept B - No dog park	28.8% <div><div></div></div>	19

Totals: 66

14. DISC GOLF: Do you recommend a short disc golf practice range in Delano Line Park?

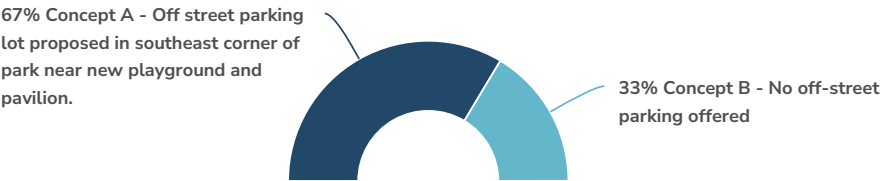


15. SHARED USE TRAIL: Do you recommend a wider or narrower paved trail in Delano Line Park?



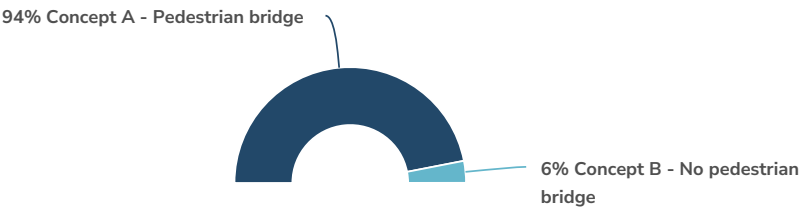
Value	Percent	Responses
Concept B - Narrower paved trail extends through Delano Line Park	65.2% <div><div></div></div>	43
Concept A - Wider paved trail extends through Delano Line Park	34.8% <div><div></div></div>	23
		Totals: 66

16. PARKING: Do you recommend a small parking lot off Line Street, including security cameras, in Delano Line Park?



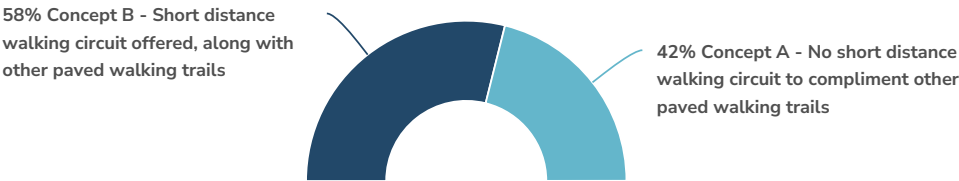
Value	Percent	Responses
Concept A - Off street parking lot proposed in southeast corner of park near new playground and pavilion.	67.2% <div><div></div></div>	43
Concept B - No off-street parking offered	32.8% <div><div></div></div>	21
		Totals: 64

17. BRIDGE: Do you recommend a pedestrian bridge connection across Shoal Creek on the east side of the park near Line Street?



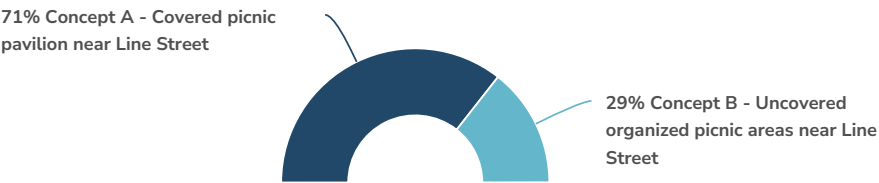
Value	Percent	Responses
Concept A - Pedestrian bridge	93.9% <div><div></div></div>	62
Concept B - No pedestrian bridge	6.1% <div><div></div></div>	4
		Totals: 66

18. WALKING LOOP: Do you recommend a short, paved walking circuit in Delano Line Park?



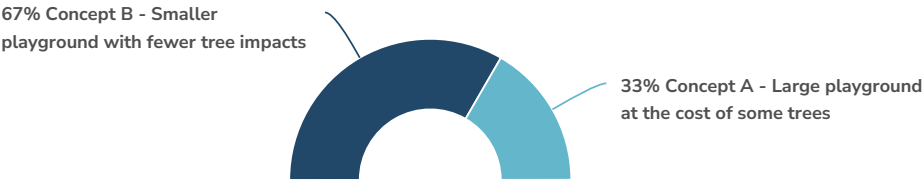
Value	Percent	Responses
Concept B - Short distance walking circuit offered, along with other paved walking trails	57.8% <div><div></div></div>	37
Concept A - No short distance walking circuit to compliment other paved walking trails	42.2% <div><div></div></div>	27
		Totals: 64

19. PICNIC AREAS: Do you recommend a pavilion near Line Street (similar to existing pavilion at Dusty & Alston), or do you recommend uncovered organized accessible picnic areas near Line Street?



Value	Percent	Responses
Concept A - Covered picnic pavilion near Line Street	71.2% <div><div></div></div>	47
Concept B - Uncovered organized picnic areas near Line Street	28.8% <div><div></div></div>	19
		Totals: 66

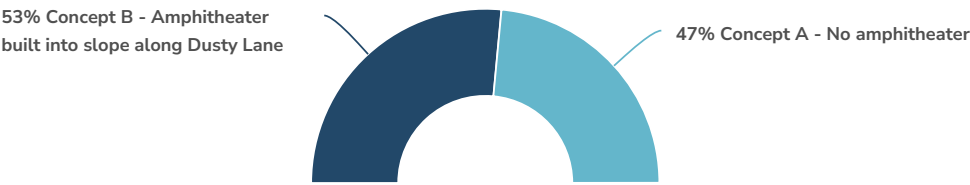
20. ALSTON DRIVE PLAYGROUND: Both concepts recommend new play equipment at the corner of Alston Drive & Dusty Lane. Do you recommend a larger playground in this location (will result in loss of some trees) or do you recommend a smaller playground with fewer tree impacts?



Value	Percent	Responses
Concept B - Smaller playground with fewer tree impacts	66.7% <div><div></div></div>	44
Concept A - Large playground at the cost of some trees	33.3% <div><div></div></div>	22

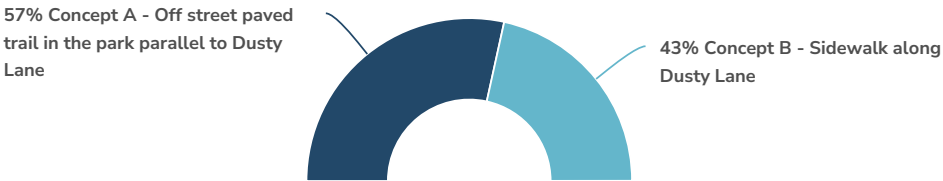
Totals: 66

21. AMPHITHEATER: Do you recommend a modestly-sized amphitheater along Dusty Lane as a community gathering space?



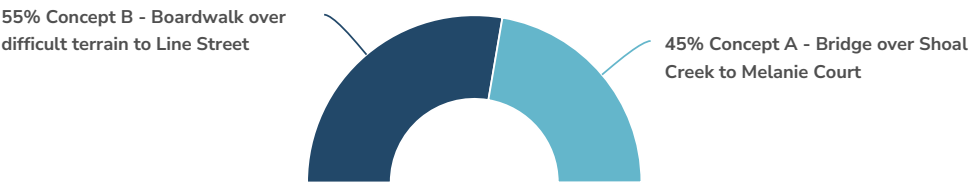
Value	Percent	Responses
Concept B - Amphitheater built into slope along Dusty Lane	53.0% <div><div></div></div>	35
Concept A - No amphitheater	47.0% <div><div></div></div>	31
		Totals: 66

22. SIDEWALK: Do you recommend a sidewalk along Dusty Lane or an off-street paved trail in the park next to Dusty Lane?



Value	Percent	Responses
Concept A - Off street paved trail in the park parallel to Dusty Lane	56.9% <div><div></div></div>	37
Concept B - Sidewalk along Dusty Lane	43.1% <div><div></div></div>	28
		Totals: 65

23. WHITE OAK PARK TRAIL: Do you recommend a bridge connection from White Oak Park to Melanie Court or a boardwalk connection from White Oak Park to Line Street?



Value	Percent	Responses
Concept B - Boardwalk over difficult terrain to Line Street	55.4% <div><div></div></div>	36
Concept A - Bridge over Shoal Creek to Melanie Court	44.6% <div><div></div></div>	29
		Totals: 65

24. Is there anything you would like to add? Feel free to expand on one of your answers above, or tell us about something we didn't ask about.

ResponseID	Response
7	After discussing with other neighbors, I agree that finding a way to connect Delano-Line Park and White Oak Park would be extremely practical. This would allow the two parks to be more cohesive and increase usage. A sidewalk/bike path along Line Street to access the proposed boardwalk at the corner of Line Street and White Oak Park would be ideal.
10	Please save trees and prioritize removing ivy.
22	I frequently walk on Dusty Lane, I don't have a strong feeling about a sidewalk versus a paved path inside the park, but would prefer whichever option has the least impact on existing trees
24	I feel it would be to "Inviting to folks" Who don't live in White Oak Hills to easily vandalize the white oak hills trail if we have an entrance at Line st. I think the only entrances to this trail should be on White Oak Dr. and Melanie Court.
30	Regardless of the concept chosen I highly value (1) playground expansion and (2) dog park. If you look at the demographics of residents, most fall within one or both of these categories.
37	Great ideas but how will the park be secured from folks who see it as an opportunity to create unsafe environment
42	As a parent of a young child, I am thrilled about the proposed playground additions. However, I strongly believe that as many trees as possible should be preserved, and do not support cutting down trees in favor of building a larger playground. Thank you for all of the work that has been put into this. I am excited to see what happens.
44	We want the park to feel welcoming and safe. We need to address crime and the unhoused. Will there be security cameras and/or lights at night? Will this become a new place for criminals to test guns? An encampment for those experiencing homelessness? I don't think we want either of those things...
59	Maybe smaller dog parks with a small kids park right beside them or between them.
61	Are there any plans to add a drinking water fountain?
66	I like the proposed plans, which give us a lot of options. I love that you included disc golf, which gives parents something to do for exercise outside of walking in our own backyard. Great job!
69	Please make the disc golf space happen! I'd love to help with that.

ResponseID	Response
74	I think the more we can incorporate walking areas without destroying nature, the better! But I love both concepts for both parks. I feel passionately about the connection to Line Street for the White Oak Park, only because I think it is more accessible for the neighborhood as a whole. I also really love the idea of a small ampitheater, but unclear if that would include electric access - I think this is an awesome opportunity for hosting small gatherings/events!
78	No removal of trees! Dekalb County's Dept. Of Deforestation has already done enough damage.
81	Minimal impact to trees is preferred.
85	Could you please add drinking fountains near playgrounds and picnic pavilions.

1. Share your feedback below

ResponseID	Response
1	I think the Delano Line park should make the playground bigger. The park seems like it's leaning more towards no child people with dogs, but there are many children here who could really use equipment to play on. Dog parks are a controversial idea in the first place and not where funds should be concentrated. Also, I have yet to see a park with frisbee golf have it utilized enough to make it worthwhile. I think the trails and pavilion ideas are great.
2	The proposed improvements to the parks look amazing and I am very excited about these changes. I have participated in community workdays removing english ivy from trees and I feel satisfied on my daily walks when I see the ivy dying on beautiful large trees that were once covered.
4	I love the white oak park proposal! It would be a great way to connect the whole neighborhood. I would want to ensure that we have safety measurements for the secluded path. This will be a great improvement for the neighborhood.
5	I would love a nature trail like this in my neighborhood! Maybe there can be signs that teach about our local plant species? The more level the trail the better for folks with mobility challenges. Really a raised wooden bath would be the safest, most accessible and sustainable option.



P.O. Box 4936  
Atlanta, GA 30302  
[parkpride.org](http://parkpride.org)