

leopas R Johnson Park

2 0 1 0



**CLEOPAS R JOHNSON PARK
PARK VISION
2009-2010**

Project Notebook Contains:
Executive Summary
Acknowledgements
Public Outreach Overview
Vision Plan
Project List

Appendix (electronic copy only)
Visioning Scope
Public Proces Details
Design Workshop Scans / Records
Detailed Survey Results
Sign-in Sheets
Steering Commitee MOU's

CLEOPAS R. JOHNSON PARK

VISIONING PROGRAM

Executive Summary

This project was selected for Visioning out of several others that were received in May of 2009. The park is well designed and constructed, but does not function well for the community that is very interested in programming around cultural affairs such as performing and fine arts. The park is supported by a strong Friends of Cleopas R. Johnson Park group and more support can be garnered from the Castlebury Hill neighborhood, Villages at Castlebury Hill and the Atlanta University Center. Several people from those entities were present and engaged during the Visioning process.

The Steering Committee comprised of several committed community leaders from the surrounding neighborhood. The Committee met monthly to discuss how to engage the wider community and to make decisions based on community input at public meetings. The committee scheduled four public meetings to be held at various locations within the community as described below:

- Monthly Committee Meetings from November, 2009 to June, 2010
Second Mondays at 1:00 PM at John Hope Community Center
- February 11: Public Visioning Meeting
6:00 PM, Calvin Lockwood Photography Studio
- March 11: Design Workshop
6:00 PM, South Lounge, Kilgore Campus Center, Morehouse College
- April 8: Review of Preliminary Options
6:00 PM, John Hope Community Center
- May 13: Presentation of Final Plan & Prioritization
6:00 PM, John Hope Community Center

The plan included herein is meant to serve as a documentation of the community's agreed projects and priorities for Cleopas R. Johnson Park. The graphic plan illustrates concepts and is not considered to be a set of construction documents. It will take cooperation from the City, the neighbors, and the greater Atlanta community to construct all the changes in and between the parks. The Steering Committee will serve an ongoing role in spearheading the changes to the park, finding funding sources, and overseeing project development.

Park Pride will continue to serve as a liaison between the community and potential funding sources, including the City of Atlanta. It is expected that the entire build-out of the improvements proposed for the Cleopas R. Johnson Park will take years, if not decades to complete. The first step, determining the best ways to improve Cleopas R. Johnson Park is completed and another chapter in its redevelopment can begin.





Historic Photograph: Representative shot-gun style homes in the Cleopas Johnson neighborhoods. c. unknown

Acknowledgments

Park Pride would like to thank all the members of the community who attended the series of Steering Committee meetings and public meetings. The input from the neighbors and friends directed the outcomes of the Vision and was invaluable to creating the plan. Park Pride staff should also be acknowledged for their hard work and dedication to following through with the project.

Steering Committee

Angela Clepa
Kenyatta Johnson
Mike Meyers
Clay Seymour
Wanda Whiteside
Council person Cleta Winslow
Melanie Wofford

Community Participants

Don Dinkel
Joshua Grogan
Stephen Jenkins
Calvin Lockwood
Aga Nelson
Erica Pines
Cathy Richards
Felicia Sanchez
Dana Thomas
Jamal Waleed
Phyllis B Wyatt
Amon Martin
James Talley

City of Atlanta, Department of Parks

Pat Katz, RLA

Park Pride Staff

Walt Ray, RLA, Director of Park Visioning
Nandita Godbole, Program Coordinator

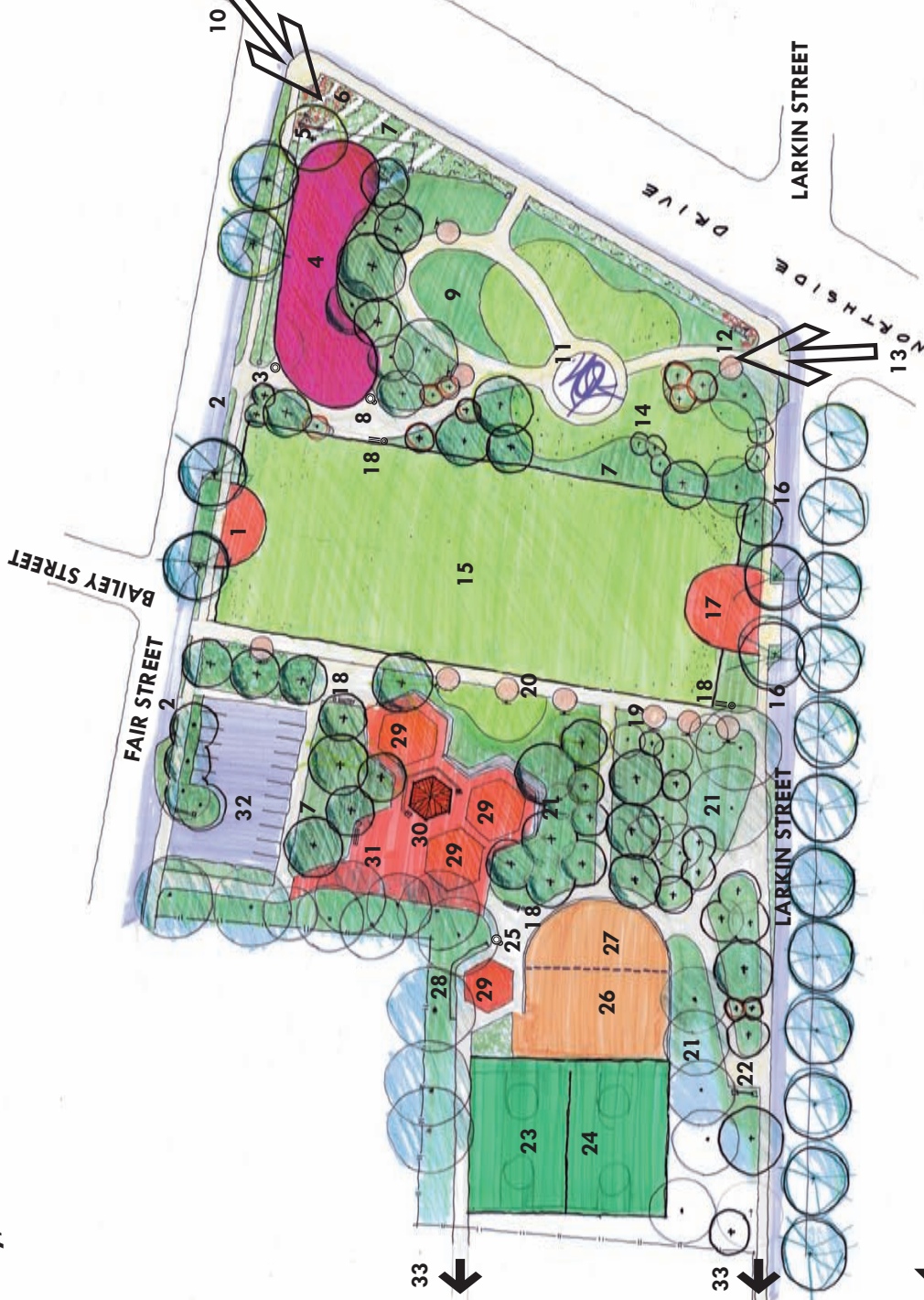


Cleopas R Johnson Park: Vision Plan

May, 13 2010



- KEY**
1. Lawn Overlook
 2. Parallel Parking
 3. Trash Receptacle
 4. Playground
 5. Sign
 6. Annual Color
 7. Landscape
 8. Drinking Fountain With Dog Bowl
 9. Gathering Area (Future Community Garden)
 10. View To Sculpture
 11. Existing Sculpture
 12. Sign
 13. View To Sculpture
 14. Lawn
 15. Lawn
 16. Parallel Parking
 17. Small Stage
 18. Bench and Trash Receptacle
 19. Display Space With Permanent Easel
 20. Legacy Walk
 21. Tree Canopy With Ground Cover
 22. Sign
 23. Basketball
 24. Basketball
 25. Drinking Fountain With Dog Bowl
 26. Skate Spot
 27. Possible Future Expansion
 28. Seat Wall
 29. Special Paving
 30. Pavilion
 31. Plaza
 32. Existing Parking / Event
 33. To Tennis And Overflow / Event Parking

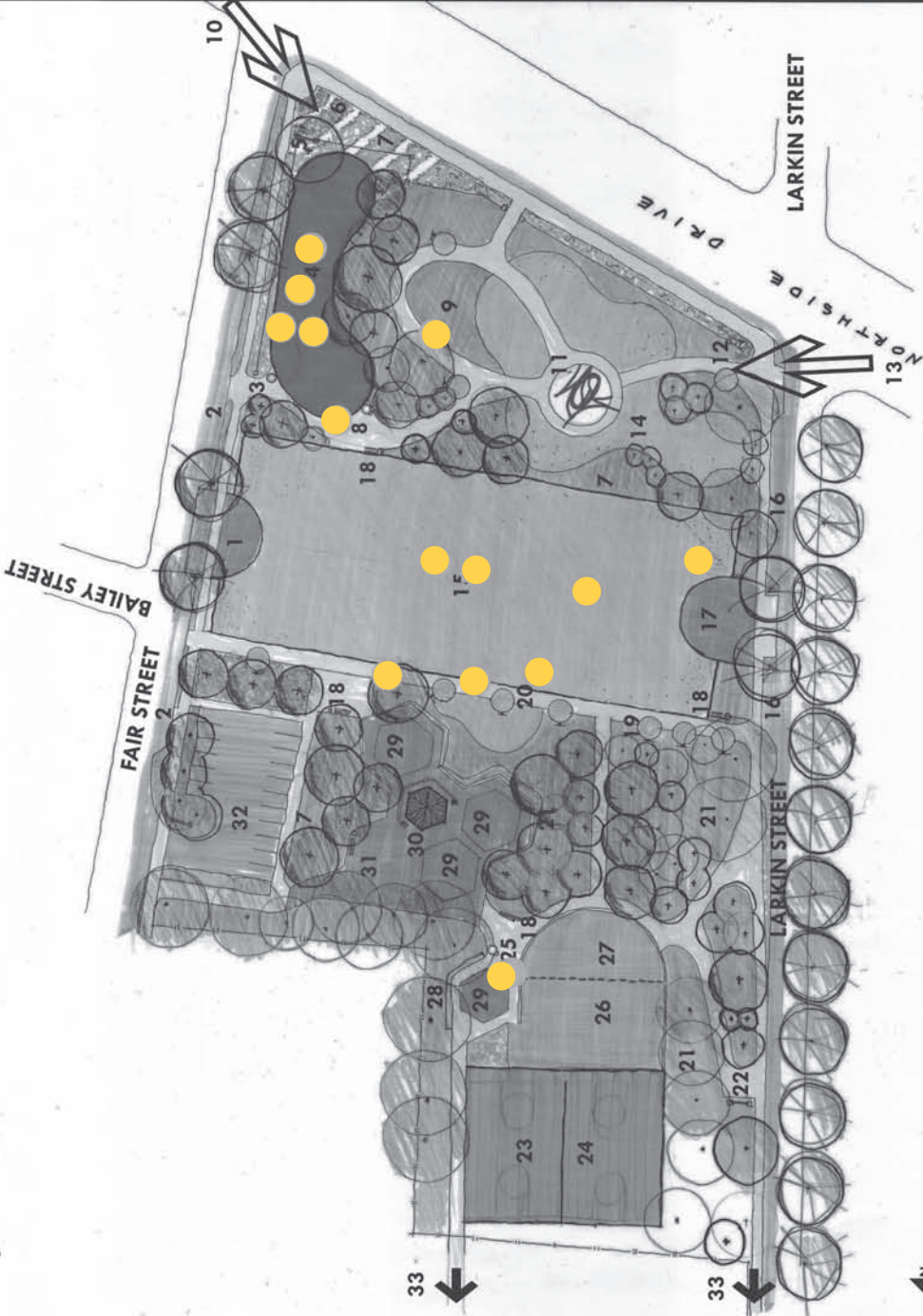




- KEY**
- 1. Lawn Overlook
 - 2. Parallel Parking
 - 3. Trash Receptacle
 - 4. Playground
 - 5. Sign
 - 6. Annual Color
 - 7. Landscape
 - 8. Drinking Fountain With Dog Bowl
 - 9. Gathering Area (Future Community Garden)
 - 10. View To Sculpture
 - 11. Existing Sculpture
 - 12. Sign
 - 13. View To Sculpture
 - 14. Lawn
 - 15. Lawn
 - 16. Parallel Parking
 - 17. Small Stage
 - 18. Bench and Trash Receptacle
 - 19. Display Space With Permanent Easel
 - 20. Legacy Walk
 - 21. Tree Canopy With Ground Cover
 - 22. Sign
 - 23. Basketball
 - 24. Basketball
 - 25. Drinking Fountain With Dog Bowl
 - 26. Skate Spot
 - 27. Possible Future Expansion
 - 28. Seat Wall
 - 29. Special Paving
 - 30. Pavilion
 - 31. Plaza
 - 32. Existing Parking
 - 33. To Tennis And Overflow / Event Parking

Cleopas R Johnson Park: Vision Plan

May, 13 2010



Prioritized Projects

Cleopas R. Johnson Park
Park Visioning
Project List

Preliminary

Key	Item	Priority	Cost	Description	Volunteer Opportunity - Yes / No	Possible Funding Source
1	Lawn Overlook	Medium	\$30,000	Paved plaza with interesting paving pattern. Small area to overlook park/lawn	No	Consider combining with small stage- Community Grant (Park
2	Parallel Parking - Fair Street	Low	\$15,000		No	
3	Trash Receptacles - Site Wide	High	\$18,000	Matching Receptacles (match to benches as well) - Victor Stanley, black steel - or similar	No	
4	Playground	High	\$120,000	Replace current playground funded. Would like to relocate to northeast corner of park, build fence at same time.	Possible (Kaboom)	Kaboom
5	Sign at Fair & Northside Drive	High	\$4,000			
6	Annual Color	High	\$500	Volunteers to plant	Yes	City Greenhouse
7	Landscape & Fence	High	\$60,000	Build when playground relocated to more desired location	Yes - Not Fence	Possibly part of playground relocation
8	Drinking Fountain/Dog Bowl	Medium	\$5,000	Match to other park furnishings	No	
9	Gathering Area (Future Comm. Gard.	Low	\$6,000	If community garden becomes higher priority, it can be built in center of area	Yes	
10	View to Sculpture	Medium	\$20,000	Remove and relocate trees to enhance view to sculpture from N'side Dr.	Consider site-wide tree plan. Replace on site in appropriate locations	
11	Existing Sculpture		\$3,000	Provide uplighting and illumination	Consider site-wide tree plan. Replace on site in appropriate locations	
12	Sign at Larkin & Northside	High	\$4,000	City of Atlanta sign with landscaping		
13	View to Sculpture		N/A	In conjunction with other (#10)		
14	Informal Lawn	Medium	\$22,000		Yes	
15	Formal Lawn	High	\$85,000	Turf area: Remove trees, re-grade as needed, irrigate and sod. Provides seating area for lower stage.	No	Community Grant
16	Parallel Parking - Larkin Street	Low	\$15,000			
17	Small Stage	Medium	\$35,000	Matching paving pattern to Lawn Overlook. Provide electricity and water at stage in locked utility box.	No	Consider combining with lawn overlook- Community Grant (Park Pride)
18	Bench and Trash Receptacles	High	\$24,000			
19	Display Space with Permanent Easles	Medium	\$7,500	10 pads and sculptural easles - build one to ten at approx. 7,500/each	Engage Local Artists	Consider combining with lawn overlook- Community Grant (Park Pride)
20	Legacy Walk	High	100,000	Include sculptural elements in walk	Engage Local Artists	Community Grant, DPRCA - Cultural Affairs - possible funding available???
21	Tree Canopy with Ground Covers	Low	35,000	Will probably happen as result of tree recompense from Views to Sculpture and from Playground construction	Yes	Relocate and re-plant trees as necessary. Form dense shady areas in key locations.

Cleopas R. Johnson Park
Park Visioning
Project List

Preliminary

22	Sign at Larking Street	High	\$4,000	City of Atlanta sign with landscaping	No	
23 & 24	Basketball Courts	High	\$20,000	Replace current tennis court with two b-ball courts.	No	
25	Drinking Fountain at BB/Skate	High	\$5,000		No	
26	Skate Spot	High	\$50,000	Convert existing b-ball court to skate spot by purchasing equipment and setting it up.	Possible, depends on manufacturer and community willingness	
27	Skate Spot Expansion	Low	100,000	Concrete bowl expanded off first phase bball court conversion. Consider doing if skate spot is well-used and adds positive element to park.	No	
28	Seat Wall		\$8,500		No	
29	Special Paving		\$25,000	Replace sod with paving pattern, consider commissioning artist to design/install original piece.		
30	Pavilion		\$35,000	Small pavilion with two to three tables.	No	
31	Plaza		\$80,000	Refurbish existing playground space. Maintain sloping granite walls. Provide interesting/original paving in hexagon spaces.	No	
32	Existig Parking		\$20,000	Re-seal and stripe for now. Eventually, mill surface, re-pave, and re-stripe.	No	
33	To Tennis and Overflow Parking		\$120,000	Need steps/ramps and concrete surfaces	No	
SiteWide	Sidewalk Re-Alignment		\$30,000	Concrete paths to re-define pedestrian paths	No	
	Total:		\$821,000			