

*West Manor Park
Visioning Plan, 2007*



The West Manor Park Visioning Program began with the receipt of an application from the Friends of West Manor Park, asking for help organizing a Conceptual Master Plan for their neighborhood park. Once Park Pride accepted the application for Visioning, the neighborhood was invited to participate in the process.

The Steering Committee comprised the existing Friends of West Manor Park and was already well-organized and highly functioning as a group. Their existing organization within the community made it possible to advertise for public meetings very effectively, minimizing the need for an intensive effort. The Committee agreed upon a three-public-meeting format: a Visioning Meeting, a Design Workshop, and a Final Design Review. These three meetings were scheduled and advertised as promised.

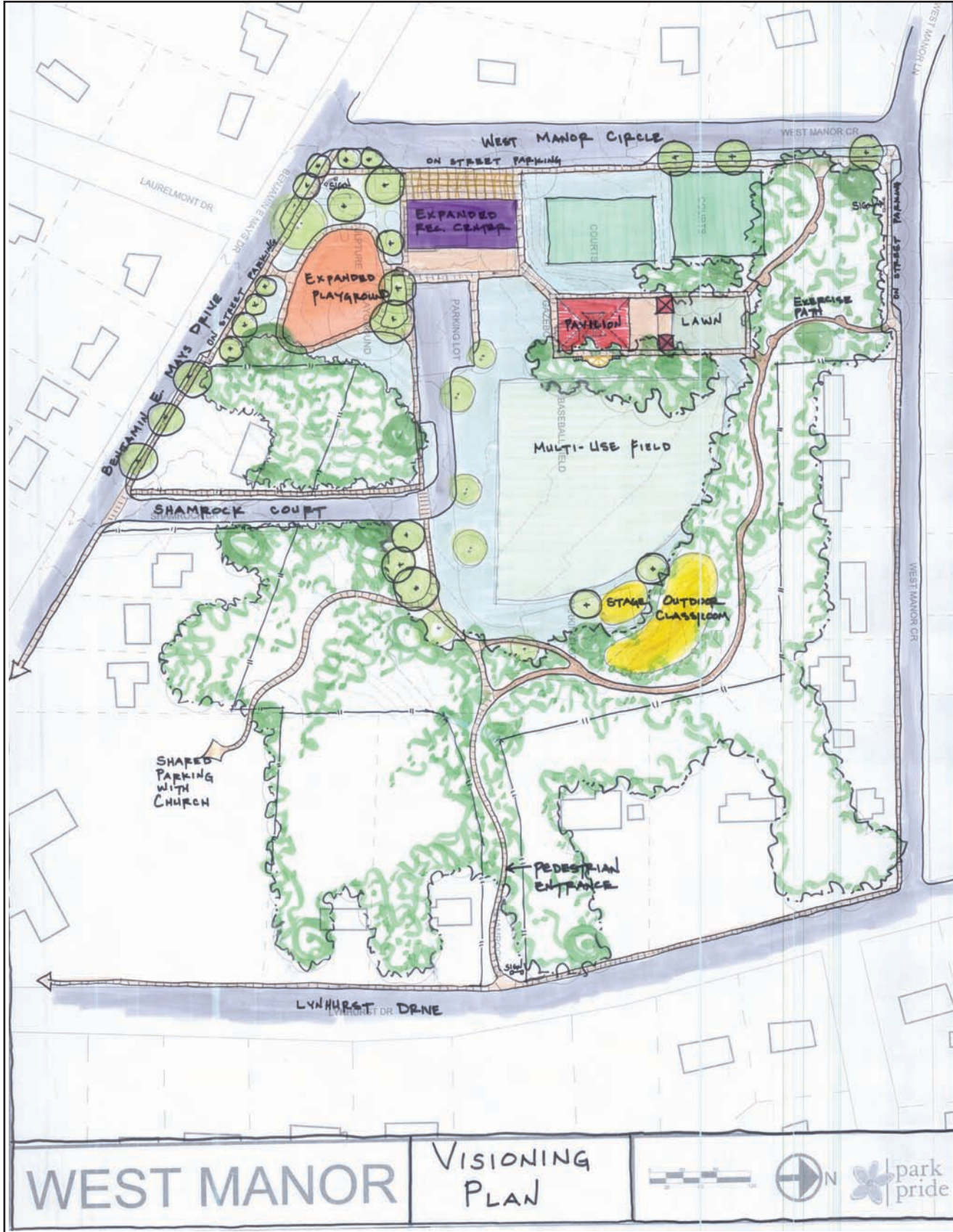
The first public meeting was the Visioning Meeting. At this meeting, a 'wish list' was compiled for the park. The second public meeting was the Design Workshop. The well-attended meeting gave participants the opportunity to fit the wish list onto the site. Three teams developed concepts that were presented to the other teams for comment and discussion. This led the Park Pride team on the mission of distilling those plans into a Visioning Plan that was presented at the third public meeting. At the third and final public meeting, participants discussed the pros and cons of the plan and agreed that it represented their wishes.

Park Pride compiled the project list. The Steering Committee reviewed the list and named their three highest-priority projects. Since there is no funding available at this time for capital improvements in the park, funding opportunities may help serve as priorities for implementation.

The plan included herein is meant to serve as a documentation of the community's agreed projects and priorities for West Manor Park. The Visioning plan illustrates concepts and is not considered to be a set of construction documents. It will take cooperation from the City, the neighbors, and the greater Atlanta community to construct all the changes in the park. The Friends of West Manor Park will serve an ongoing role in spearheading the changes to the park, finding funding sources, and overseeing project development. Park Pride will continue to serve as a liaison between the community and potential funding sources, including the City of Atlanta. It is expected that the entire build-out of the improvements proposed for West Manor Park will take years, if not decades to complete. The first step, determining the best ways to improve West Manor Park is completed and another chapter in its redevelopment can begin.

West Manor Park Final Visioning Plan

Park Pride staff attempted to capture the comments made at the Design Workshop. This illustration is the attempt at consolidating the three previous designs into one, final design. The Visioning Plan was shown to the public at the third and final public meeting, where it was approved by the Friends of West Manor Park.



WEST MANOR PROJECT LIST - JANUARY, 2008				
ITEM	QUANTITY / DESCRIPTION		COST	PROJECT TYPE/FUNDING
A	Expanded Playground	Enlarge and expand existing playground. Remove existing sculpture from park. Use sculpture area for expanded playground and paved path circling larger playground.	\$100,000	Neighborhood fund raising, Possible City funding??? Community Grant and/or Kaboom! Build
B	Entrance Signs	Add new sign at corner of Benjamin E. Mays Drive and West Manor Circle. Place sign in stone piers with flanking walls and landscaping. Include similar signage at corner of West Manor Circle and West Manor Circle (Pine tree area) and at Shamrock Court	\$45,000	City sign with fundraising from community for extras
C	Perimeter Block Streetscape/Parking	Construct paved sidewalk around entire block that park occupies including: Benjamin E. Mays Drive, West Manor Circle, and Lynhurst Drive. Add on-street parking where possible, especially along Mays Drive and in front of the tennis courts at West Manor Circle. Plant street trees where possible and add ornamental street lights.	\$500,000	Look for Federal or State funding
D	Expand Recreation Center	Replace existing recreation center with one containing more amenities, classrooms, computer area, arts room, full-size gym, locker rooms, etc. Provide access directly from park to restrooms, so that restrooms may be opened for events that happen in the park when the recreation center is closed.	\$700,000	
E	Pavilion Replacement	Replace existing gazebo with full-service pavilion that can accommodate 100-150 people. Include smaller barbeque pavilion and events lawn that can be tented for very large events or used as a separate space for smaller events. Surround pavilion and lawn with paved walk, linking it to recreation center and/or parking area.	\$80,000	Community Grant
F	Exercise Path	Add rubberized-surface path system from West Manor Circle corner to area where parking currently is (future outdoor classroom). Incorporate exercise stations (Life Trail or similar) along path. Plant edges of path with native woodland species such as ferns, native azaleas, oakleaf hydrangea, etc.	\$90,000	Volunteers for plantings
G	Outdoor Classroom	Construct outdoor seating in semi-circular pattern to accommodate 50-100 people. Leave existing trees undisturbed, except for trimming bottom branches or pruning to encourage better health. Construct stone or brick stage at bottom of semi-circle. Add electric and water at stage area.	\$45,000	Community Grant and/or local fundraising
H	Lynhurst Drive Pedestrian Entrance	In existing right-of-way (possibly abandoned) construct paved pathway from Lynhurst Drive into park at Shamrock Court	\$45,000	
I	Shared Parking with Church	Construct short, paved path between Shamrock Court and existing parking lot at church property. Path should be 6' wide (approx.) and should have gateway signage at church parking lot. Would be a joint project between church and park group. Cooperation between both parties will be critical.	\$55,000	Church, Neighborhood Group, Community Grant
J	Woodland Restoration	Remove exotic species such as privet and eleagnus. Introduce native ground covers such as ferns, herbaceous perennials, woodland vines, and bulbs. Plant trees that will replace very old trees or those that are in decline. Maintain tree canopy and introduce new plantings for mix of meadow in flatter areas and woodland in steeper slopes. Introduce wildlife as appropriate.	\$10,000	Park Volunteers, Georgia Native Plant Society, Forestry Grants
K	Site-Wide Lighting	Investigate ways to light park after hours. Add ornamental lighting in form of 'historic' pedestrian-level lights and bollard lights along paths. Lighting should be soft, not glaring. Consider motion-sensor lights at areas where vandalism is more likely (pavilion, outdoor classroom, playground)	\$200,000	
L	Site-Wide Site Furnishings	Benches, trash receptacles, and bike racks should be included in any improvement in the park. There will be areas throughout the park where no such project has yet happened.	\$35,000	
West Manor Park Total:			\$1,905,000	

West Manor Park: Visiting Plan
 Park Pride, Park Visiting Program, 2007-08
 www.parkpride.org

