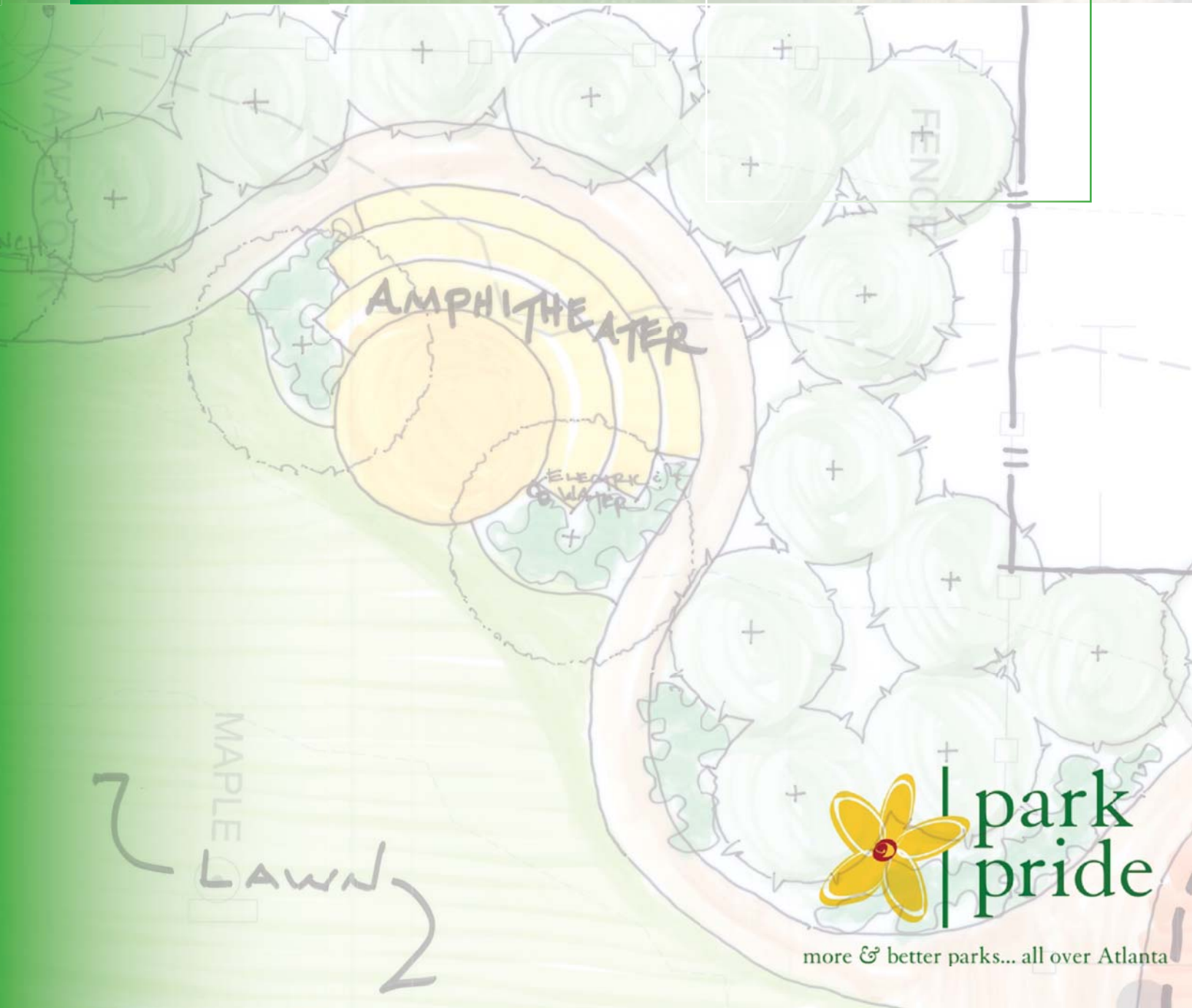


Egan Park



CONCEPTUAL MASTER PLAN MINI VISIONING, 2007



 park
pride
more & better parks... all over Atlanta

Egan Park: Mini Visioning Scope Of Work

Park Pride's Park Visioning Program seeks to assist neighbors develop a conceptual master plan for the park in their community. The Visioning program takes approximately eight months of community interaction while Park Pride professionals teach neighbors to interact, work together for a common goal, and engage uninvolved neighbors, while reaching community-wide consensus about the goals and plans that will direct the future of the park. Some neighborhoods, such as that of Egan Park already have the leadership and communications vehicles in place, and do not necessarily need the full eight-month process to learn these lessons.

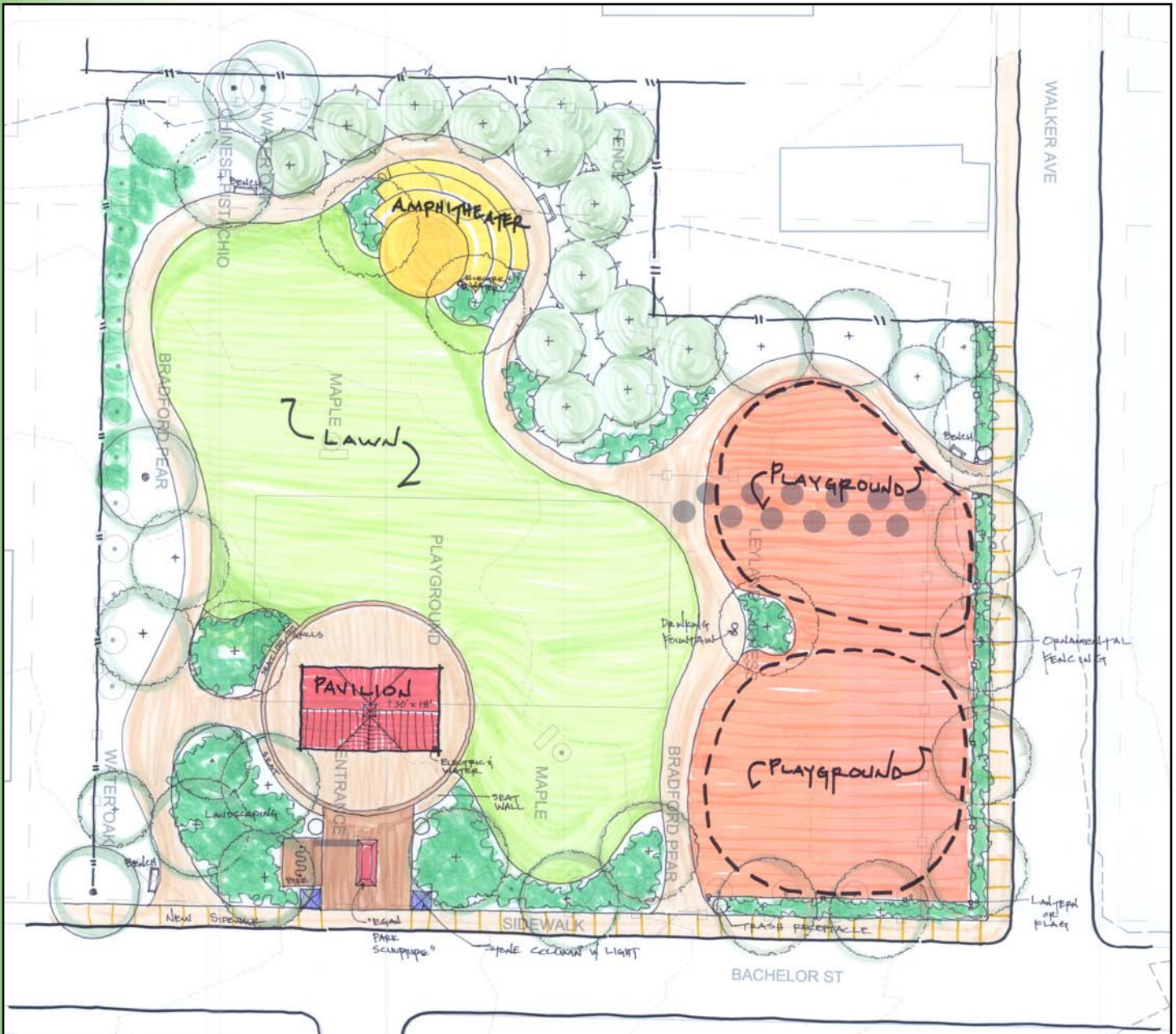
For this reason, Mini-Visioning was created to offer the community a short-cut to developing their conceptual master plan. In the Mini-Visioning process, well-organized communities can begin more quickly with the public meeting schedule. Two public meetings are offered, during which verbal and graphic engagement is used to help neighbors determine what they want in their park, where amenities should be located, and how large each amenity should be.

The Egan Park neighborhood fit the Mini-Visioning model perfectly. Already well organized, this group elected to host two public meetings: The Visioning Meeting, where a wish list was explored and developed was combined with Design Workshop, where the wish list was applied to the site; and the Conceptual Master Plan Review, where the community reviewed Park Pride's interpretation of the results of the Design Workshop. At the second and final public meeting, comments were solicited about the illustration and priorities were discussed.

Included in this document is the documentation of the overall process, the illustration of the final results, and the list of projects developed in the master plan, with associated costs.



Egan Park Conceptual Master Plan



Egan Park

CONCEPTUAL
MASTER PLAN

AUGUST, 2007



615 Police De Leon Ave, 8th Floor, Atlanta, GA 30308

Park Pride
more & better parks ... all over Atlanta



EGAN PARK CONCEPTUAL MASTER PLAN: PROJECT LIST, AUGUST 2007			
ITEM	QUANTITY / DESCRIPTION	COST	PROJECT TYPE/FUNDING
Pavilion	30'x18' (approximate) covered area. Flagstone paver flooring with built-in grills and seating in circle around structure. Stone piers supporting rough-hewn timber construction. Gable on front aligns with street intersection. Style to be Craftsman with standing-seam metal roof. Diagonal corners should have water connector and electricity connector. Lighting on motion sensor. 3-4 picnic tables. Light with 'lantern style lights'. Consider adding wireless internet to entice business people and students to use pavilion. Also, parents can use wireless while watching children use playground.	\$80,000	Egan Park Neighbors to raise funds. Consider asking foundations and/or corporations.
Sidewalk Construction	6' wide, concrete walk with handicap access at corner and at Pavilion Entrance.	\$28,000	Possible City Public Works Department
Pavilion Entrance Plaza	20'x20' Plaza with bike rack to side and stone columns with 'lantern style' lights. Pavement type can be either concrete or flagstone to match pavilion floor.	\$35,000	
Egan Park Sculpture	At center of Pavilion Entrance Plaza. Can be added at later date. Some sculpture/art/interpretive signage that celebrates and shares history of Egan Park neighborhood.	\$15,000	Egan Park Neighbors
Relocate Existing Playground	Move existing play structures to side of park. Replace existing mulch and border with sod.	\$30,000	City Staff
Expand Existing Playground	To relocated playground equipment, add structures for a variety of ages of children and separate those ages by location, rubberize surface	\$150,000	Possible KaBoom! Build
Perimeter Trail	5'-6' wide rubber-surface trail surrounding park	\$100,000	Egan Park Neighbors
Amphitheater	As illustrated, include electric and water at base	\$55,000	Egan Park Neighbors
Lawn	As illustrated, warm-season grass sod	\$30,000	Community Volunteer Opportunity
Drinking Fountain	Near relocated playground. Include dog-level water dish	\$5,000	City Staff
Perimeter Planting	At back and sides of park, consider planting tall, evergreen trees and shrubs to screen neighboring properties. Add shade trees where possible. Remove existing leyland cypress and install plants such as deador cedar, American holly, virginia cedar, etc.)	\$25,000	Community Volunteer Opportunity
Bench	Three benches as illustrated. Black iron, consider Victor Stanley (look on-line) manufacturer. To coordinate with trash receptacles	9,000	Egan Park Neighbors
Trash Receptacles	Three to four black iron receptacles, side-loading, consider Victor Stanley (look on-line) manufacturer. To coordinate with benches	\$9,000	Egan Park Neighbors
Site Lighting	Low-level lighting, mostly at street and pavilion. Consider black, lantern-style lights.	\$34,000	City Staff with Egan Park Neighbors
Ornamental Fencing	Metal (steel or aluminum) fencing, black, 40"-48" in height. Include taller posts at corners and entrances for lantern-style lights. Include low plantings of evergreen shrubs, sturdy perennials (daylily, lantana, purple coneflower, black-eyed susan and vines (yellow jessamine) on and on each side of fence.	\$26,000	Community to Raise Funds, should be installed prior to opening new playground (as the playground will be near the street)
Landscaping at Pavilion	Low-growing evergreen ground covers and shrubs such as lirioppe, azaleas, Indian hawthorne, helleri holly, etc.	\$15,000	Community Volunteer Opportunity
Landscaping at Walker Avenue	Low-growing evergreen ground covers and shrubs such as lirioppe, azaleas, Indian hawthorne, helleri holly, etc.	\$10,000	Community Volunteer Opportunity
Egan Park Total		\$656,000	

