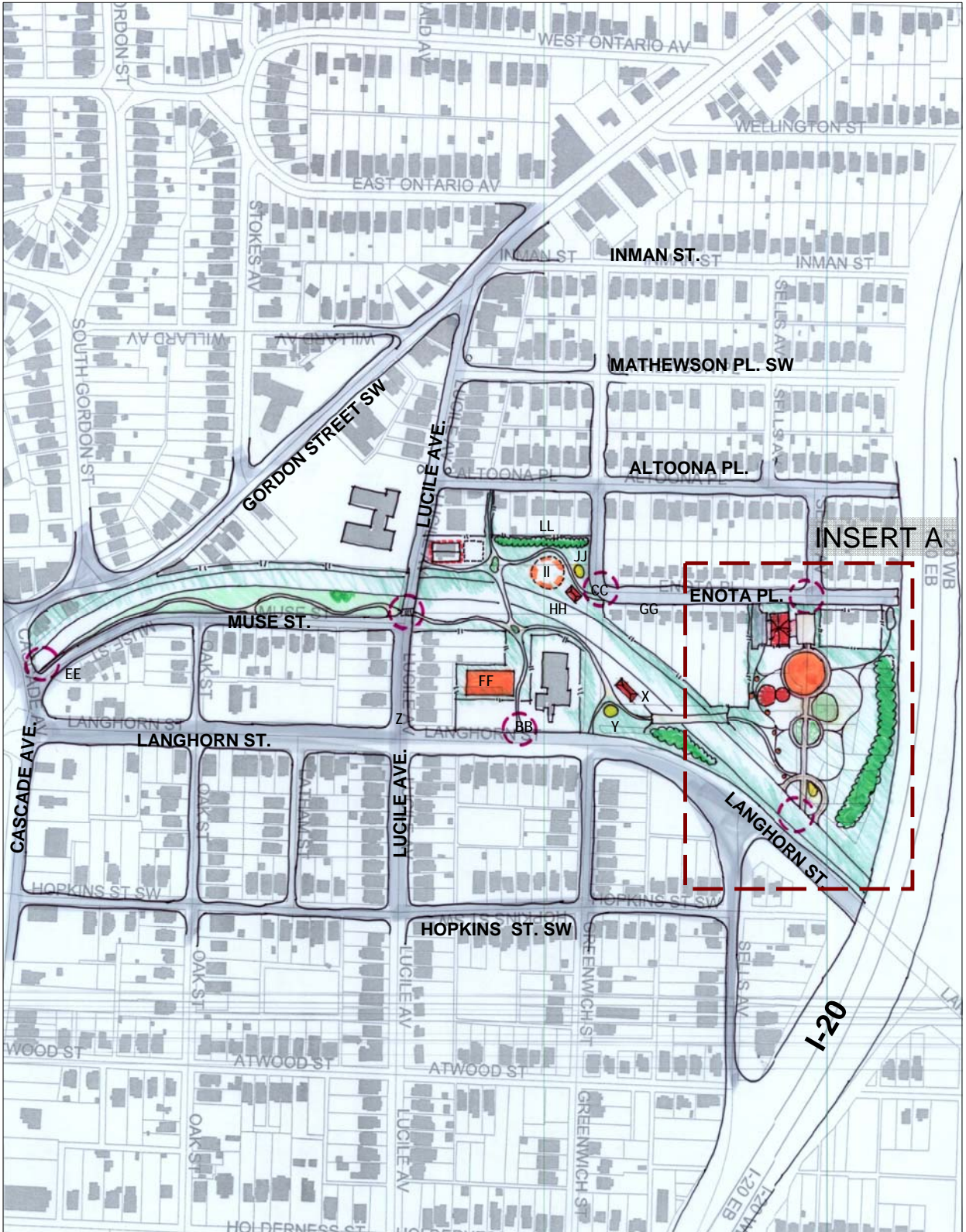
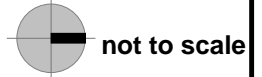




# ENOTA PARK CONCEPTUAL MASTER PLAN

## NEIGHBORHOOD OVERVIEW

JAN 2007





**Enota Park: Prioritized Project List, December, 2006**

| Priority Level / Item                            | Key on Master Plan | Approx. Cost | Description  |
|--|--------------------|--------------|--|
| <b>Top Priority Projects</b>                     |                    |              | <b>Totaling \$1,000,000</b>  |
| Relocate and Expand Playground                   | <b>D</b>           | \$150,000.00 | Relocate existing playground equipment and add additional equipment into flat, shady area just behind current location.  |
| Entrance Feature at Sells Avenue                 | <b>AA</b>          | \$10,000.00  | Enota Park-specific hardscape and landscape installation such as a stone and brick pier with identity signage, low-level lighting, and decorative plantings.   |
| Gathering Plaza                                  | <b>A</b>           | \$105,000.00 | Concrete with brick detailing. To include plantings and low-level lighting.  |
| Major Pedestrian Corridor                        | <b>J</b>           | \$130,000.00 | Concrete with brick detailing. To include plantings and low-level lighting.  |
| Uncovered Picnic Area at Beltline                | <b>S</b>           | \$10,000.00  | 6-8 Picnic tables on soft surface (gravel) with plantings. Volunteer Project.  |
| Decorative Pillars at Playground                 | <b>AA</b>          | \$10,000.00  | Brick with concrete caps, incorporate low level lighting   |
| Muse Street Path                                 | <b>MM</b>          | \$60,000.00  | Concrete with brick detailing, 6' wide with wider area (15' wide) for picnic area. Preserve existing trees.  |
| Picnic along Muse Street Path                    | <b>OO</b>          | \$10,000.00  | Install picnic tables along wide spot in paved path. Anchor to pavement.   |
| Landscaping along Muse Street                    | <b>NN</b>          | \$35,000.00  | Preserve existing trees. Plant low shrubs and groundcovers in wide swaths around trees to reduce mowing and keep mechanical equipment off tree trunks and roots. Volunteer opportunity.  |
| Natural Surface Walkway (South of Main Corridor) | <b>K</b>           | \$10,000.00  | Use crusher run base and granite fines top coat. Surface similar to new track in Piedmont Park.  |
| Life Cycle Fitness Equipment                     | <b>L</b>           | \$40,000.00  | 8-10 Stations on rubberized surface.   |
| Natural Walkway (North of Main Corridor)         | <b>I</b>           | \$10,000.00  | Use crusher run base and granite fines top coat. Surface similar to new track in Piedmont Park.  |
| Parents Pavilion                                 | <b>H</b>           | \$30,000.00  | Architecturally-distinctive pavilion with red metal roof. Should seat approximately 10 people on benches incorporated around perimeter. Concrete with brick trim flooring. Electrical outlets and wireless internet connection for parents to be able to access information while children play. |
| Covered Pavilion                                 | <b>G</b>           | \$55,000.00  | Architecturally-distinctive pavilion with red metal roof. Should seat approximately 30 people. Concrete with brick trim flooring. Electrical outlets for events. Water connection for events.  |
| Gazebo   | <b>O</b>           | \$15,000.00  | Architecturally-distinctive pavilion with red metal roof. Should seat approximately 6 people. Concrete with brick trim flooring.   |
| Screening Plantings at I-20                      | <b>Q</b>           | \$15,000.00  | Evergreen plantings to screen I-20. Volunteer Opportunity.   |

**Enota Park: Prioritized Project List, December, 2006 (continued)**

|  |          |              |  |
|--|----------|--------------|--|
| Native Plantings in Woodland   | <b>M</b> | \$5,000.00   | Introduce native plants that are purchased and rescued from construction sites. Georgia Native Plant Society is excellent resource. Volunteer opportunity.   |
| Community Garden   | <b>P</b> | \$5,000.00   | By community volunteers, site acquisition necessary, will need water tap.  |
| Site-Wide Lighting   |          | \$100,000.00 | Distinctive, decorative lighting throughout park. Pedestrian level. Low level lighting output with reflectors to protect existing residential from light pollution.  |
| Site-Wide Site Furniture   |          | \$35,000.00  | Benches, trash receptacles and at least one drinking fountain. Black, steel furniture from quality supplier.   |
| Future Lawn  | <b>N</b> | \$10,000.00  | In currently wooded area. Remove any unhealthy trees. Do not plant new trees in this area. Allow old, healthy trees to die naturally. Install sod (Fescue for low-light area). Mow frequently to thicken.  |
| Streambank Creation/Restoration  | <b>R</b> | \$45,000.00  | Create dry creek bed with rocks, stone, plantings and minimal grading along natural drainage path. Add small, natural pools to slow water run-off from site.   |
| <b>High Priority Projects</b>  |          |              |  |
| Community Center   | <b>B</b> | \$300,000.00 | This project was highly-rated by the community. The ideal site currently contains a small house. Build new center with large meeting room (for 50 people), small meeting room, computer lab, and art/activity room. Price does not include land acquisition. City DPRCA does not currently have funds to staff or maintain community center. May need to be funded from private foundation or local community. |
| Off-Street Parking at Community Center   | <b>C</b> | \$15,000.00  | 10-12 paved spaces for community center on vacant lot. Estimated price does not include land acquisition cost.   |
| Landscaping at Community Center  | <b>E</b> | \$15,000.00  | Low-maintenance shrub and flowering tree planting.   |
| Hard-Surface Path Connecting Parking to Playground and Pavilion.                       | <b>F</b> | \$10,000.00  | -  |
| Connecting Path from Pedestrian Corridor to Langhorn Parkway, North of County Facility | <b>V</b> | \$125,000.00 | -  |
| Bench Swings at Connector Path (Between Main Corridor and Langhorn Street              | <b>U</b> | \$8,000.00   | -  |
| Entrance Feature at Beltline   | <b>T</b> | \$10,000.00  | -  |
| Entrance from Langhorn Street  |          | \$10,000.00  | -  |
| Bridge Across Beltline   | <b>W</b> | \$225,000.00 | Architecturally-distinct with pillars on each side matching entry-signage and identity pillars at gateways.  |
| Large Pavillion  | <b>X</b> | \$60,000.00  | Architecturally-distinctive pavilion with red metal roof. Should seat approximately 50 people. Concrete with brick trim flooring. Electrical outlets for events. Water connection for events.  |
| Uncovered Picnic Area  | <b>Y</b> | \$15,000.00  | Picnic tables on concrete with brick trim pad. Tables may be built by volunteers.  |
| Hardscape Path Connecting Langhorn Parkway (North of County Center) to Lucile Avenue   | <b>Z</b> | \$65,000.00  | -  |
|  |          |              |  |

**Enota Park: Prioritized Project List, December, 2006 (continued)****Greenwich/Enota Node**

|  |           |              |   |
|--|-----------|--------------|---|
| Pedestrian Connection Between Enota/Greenwich and Langhorn Street      | <b>GG</b> | \$120,000.00 | -   |
| Entrance Feature at Enota Place/Greenwich Street                       | <b>CC</b> | \$10,000.00  | Pedestrian scale lighting, black steel posts, unique style. Bright lighting in meadows and dim , ground level lighting in woodland. Motion sensor lights at gateways. |
| Small Playground at Enota Place and Greenwich Street                   | <b>JJ</b> | \$50,000.00  | -   |
| Small Pavillion at Enota Place and Greenwich Street                    | <b>HH</b> | \$20,000.00  | 5' wide crusher run trail with pine straw top dressing. Minimal grading.  |
| Uncovered Picnic Area at Enota Place and Greenwich Street              | <b>II</b> | \$10,000.00  | -   |
| Landscape Screening Between Enota/Greenwich and Residential Properties | <b>LL</b> | \$30,000.00  | Soft-Surface (Crusher Run with Pine Straw Cover) Trail System. Minimal grading, 4'-6' wide.   |

**Medium Priority Projects**

|   |           |             |   |
|---|-----------|-------------|---|
| Basketball Court                              | <b>FF</b> | \$55,000.00 | - |
| Entrance Feature at Langhorn Street           | <b>BB</b> | \$10,000.00 | - |
| Entrance Feature at Lucile Avenue/Muse Street | <b>DD</b> | \$10,000.00 | - |
| Entrance Feature at Cascade Road              | <b>EE</b> | \$10,000.00 | - |

|              |  |                       |  |
|--------------|--|-----------------------|--|
| <b>Total</b> |  | <b>\$2,078,000.00</b> |  |
|--------------|--|-----------------------|--|