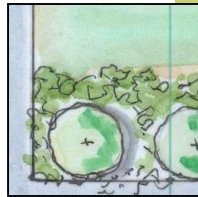
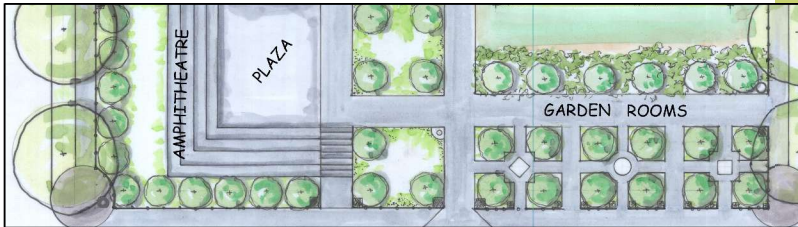


# Vine City Park

## Conceptual Master Plan

*A Community Vision*



## Vine City Park

### Park Visioning Master Plan, 2005

#### **ACKNOWLEDGEMENTS**

We would like to thank the Arthur M. Blank Family Foundation and the Waterfall Foundation for their generous support, specifically for this Master Plan. We would also like to thank the City of Atlanta's Department of Parks, Recreation, and Cultural Affairs for their contributions to the Park Visioning Program.

Perhaps, most importantly, we would like to acknowledge and express our gratitude to the members of the Steering Committee for their time, energy and honest commitment to this project.

Carrie Salvary, Steering Committee Chair

Byron D. Amos, President, VCCA

Linda Adams

Robin Carmichael

Darrion Fletcher

Gretta Freeman

Ethel Gray

Greg Hawthorne

Pearl Scott

Willie Pearl Sharpe

Ruby B Spann

Tillman Ward

## **EXECUTIVE SUMMARY**

Atlanta's Vine City neighborhood is re-developing in the shadow of the Georgia Dome to the west of downtown. Part of this change includes the creation of a new public park. Vine City is one of Atlanta's oldest inner-city neighborhoods, and Vine City Park is located west of the Atlanta downtown business district. The Vine City neighborhood extents include Simpson Street to the north, Northside Drive to the east, Martin Luther King Jr. Drive to the south, and Lowery Boulevard to the west.

Community leaders worked hard with foundations and City agencies to acquire the land, but they had no specific plan for their new park. Park Pride has worked closely with the Vine City Civic Association and the residents of the neighborhood between May and December 2005 to complete their Conceptual Master Plan for the new Vine City Park.

In May of 2005, Park Pride staff met with the Steering Committee for the first time to decide how best to engage the public in Park Pride's Park Visioning Process. Eight months and five public meetings later, the community has approved their Conceptual Master Plan. Along the way, the scope of work and the process were revised. For instance, the third public meeting was poorly attended. The Steering Committee and Park Pride pursued additional ways to reach out to the public. One such way was to host a booth at Bethune Elementary School's Fall Festival. On October 26th, two representatives from the Steering Committee and Walt Ray of Park Pride spent the evening talking to parents, teachers, and community leaders about the three design options that had been developed for Vine City Park. During this festival over forty people were informed about the options and opinions were documented. This type of outreach proved critical to making sure that Vine City's master plan had documented public support.

Since then, the final plan has been drawn and developed. The Steering Committee voted to adopt the plan on November 19th, 2005. On Saturday, December 10th, the Committee will present the design to the Vine City Civic Association for their approval. On Tuesday, January 10th, the Committee will present the design to the NPU for support.

The plan is divided into two phases. The first phase includes approximately one acre that that is already owned by City agencies. Through the Visioning Process, it was decided that the Vision for Vine City Park should include the entire block, although the majority of the block is privately owned. This will allow for a more comprehensive redevelopment of the neighborhood. The additional property may be redeveloped as phase two of the park.

The Vine City neighborhood currently is pursuing funding options to purchase the private property to expand their park space. Meanwhile, efforts are under way to secure funding for the construction of the first phase. This is an exciting time for Vine City and City of Atlanta parks.

The opportunities for public input are outlined below ~

Visioning Meeting – Participants share their ideas about what they want their park to look like.

Date: Saturday, September 17, 2005

Visioning Meeting – Participants share their ideas about what they want their park to look like.

Date: Thursday, September 22, 2005

Preliminary Design Presentation

Date: Saturday, October 15th, 2005

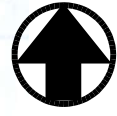
Bethune Elementary Fall Festival.

Date: Wednesday, October 26th, 2005

Final Design Presentation – The final Master Plan will be prepared based on comments received.

Date: Saturday, November 19th, 2005

# VINE CITY PARK: FINAL DESIGN



**VINE CITY PARK: FINAL DESIGN, PHASE ONE: Project Descriptions**



**Phase One: General / Overall Projects**

- Selective Grading
- Drainage Improvements
- Irrigation
- Adjust existing electrical and lighting
- Detailed Survey
- Hydrology study
- Engineering

**Magnolia Street**

**Phase One: Specific Projects**

- Lighting of Park
- Memorial Walk
- Internal Sidewalk System
- Pavilion
- Plaza
- Amphitheater
- Events Lawn
- Garden Rooms
- Ornamental Fencing
- Playground
- Site Furnishings (trash receptacles, bollards, drinking water fountains, benches)
- Landscape (general and miscellaneous)

**Vine City Park Master Plan -  
Project List    December 7, 2005**

<b>PHASE I</b>		<b>PHASE I</b>		
<b>Priority</b>	<b>Item</b>	<b>Description</b>		<b>Approx. Cost</b>
	<b>Site Preparation</b>			
		Mass Grading	To Promote Better Drainage	\$50,000.00
		Lighting of Park	Ornamental Pedestrian Lights	\$120,000.00
		Drainage Improvements	To Control/Improve Flooding	\$45,000.00
	<b>Hardscape</b>			
		Memorial Walk	Surrounding Park (Along Streets)	\$200,000.00
		Internal Sidewalk System	Concrete walk with granite accents	\$80,000.00
		Pavilion	18'x24', Includes Two Retaining Walls	\$45,000.00
		Plaza	Granite Pavers	\$7,000.00
		Amphitheater	Granite, Concrete, Brick	\$60,000.00
	<b>Landscape and Irrigation</b>			
		General Landscape		\$15,000.00
		Events Lawn		\$5,000.00
		Irrigation		\$8,000.00
		Miscellaneous landscape		\$10,000.00
		Garden Rooms	3 Landscaped Rooms, Low-growing Plantings	\$30,000.00
	<b>Special Items</b>			
		Ornamental Fencing	Cast Iron with Granite Posts and Interpretive Plaques	\$150,000.00
		Playground	Includes Retaining Walls and Fence, Rubberized Surface	\$100,000.00
		Site Furnishings	Drinking Fountains, Benches, Trash Receptacles and Bollards	\$18,000.00
	<b>Utilities</b>			
		Electrical and lighting	Relocate Existing as Necessary	\$10,000.00
		Drainage	Reset Manhole Covers as Necessary	\$10,000.00
	<b>Soft Costs</b>			
		Detailed Survey		\$10,000.00
		Hydrology study		\$20,000.00
		Engineering		\$45,000.00
		<b>TOTAL COST</b>		<b>\$1,038,000.00</b>
		<b>PHASE I:</b>		

**VINE CITY PARK: FINAL DESIGN, PHASE TWO: Project Descriptions**



**Phase Two: General / Overall Projects**

- Land Acquisition
- Mass Grading
- Lighting of Park
- Drainage Improvements
- Demolition
- Irrigation
- Miscellaneous landscape
- Site Furnishings
- Electrical and lighting
- Detailed Survey
- Hydrology study
- Engineering

**Magnolia Street**

**Phase Two: Specific Projects**

- Internal Sidewalk System
- Exercise Trail
- Pavilion
- Sport Lawn
- Gazebo



<b>Vine City Park Master Plan - Project List    December 7, 2005</b>				
<b>PHASE II</b>				
<b>Priority</b>	<b>Item</b>	<b>Description</b>		<b>Approx. Cost</b>
	<b>Site Preparation</b>			
		Land Acquisition	Purchase from Private Individuals	\$500,000.00
		Mass Grading	To Promote Better Drainage	\$50,000.00
		Lighting of Park	Ornamental Pedestrian Lights	\$120,000.00
		Drainage Improvements	To Control/Improve Flooding	\$45,000.00
		Demolition	Church, House, Apartment Bldg.	\$90,000.00
	<b>Hardscape</b>			
		Internal Sidewalk System	Concrete walk with granite accents	\$90,000.00
		Exercise Trail	Soft Surface Rubber over Concrete	\$75,000.00
		Pavilion	18'x24', Two Structures	\$30,000.00
		Exercise Trail	Soft Surface Rubber over Concrete	\$75,000.00
	<b>Landscape and Irrigation</b>			
		General Landscape		\$15,000.00
		Woodland Plantings		\$30,000.00
		Sport Lawn		\$6,000.00
		Irrigation		\$8,000.00
		Miscellaneous landscape		\$10,000.00
	<b>Special Items</b>			
		Exercise Trail	Soft Surface Rubber over Concrete	\$75,000.00
		Gazebo	Between Lawns, Architecturally Distinctive	\$30,000.00
		Site Furnishings	Benches, Trash Receptacles, Drinking Fountains	\$24,000.00
	<b>Utilities</b>			
		Electrical and lighting	Relocate Existing as Necessary	\$10,000.00
		Drainage	Reset Manhole Covers as Necessary	\$10,000.00
		<b>TOTAL COST PHASE II:</b>		<b>\$793,000.00</b>