

The Black River Water Trail...

South Carolina's newest State Park

Creating an Inclusive Conservation Project that will be used by the Public

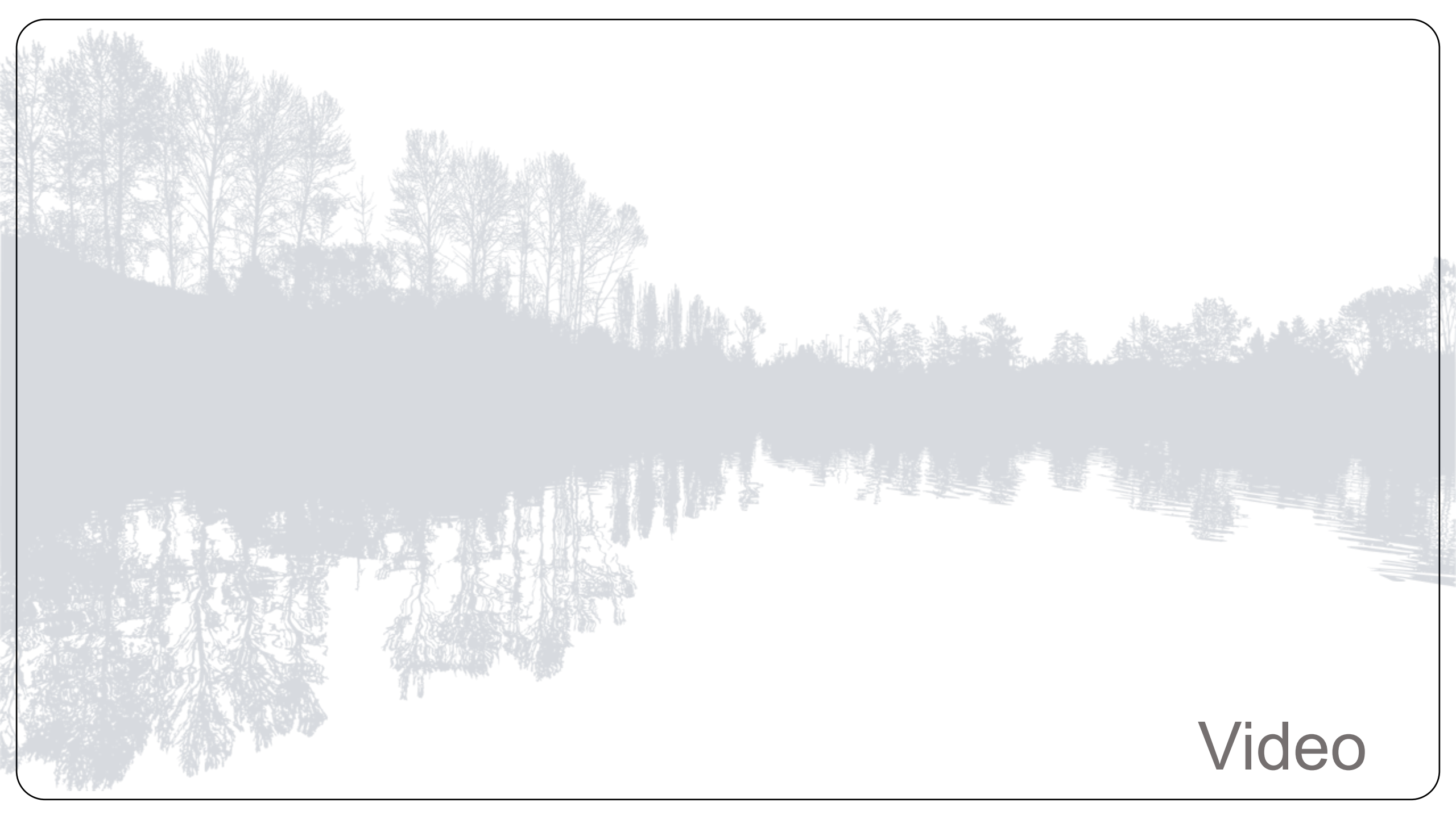
Holley Bloss Owings, Earth Design

Maria Whitehead, Open Space Institute

James Revis, SCPRT

Mayor Frank McClary, Town of Andrews





Video

SOUTH CAROLINA'S

BLACK RIVER WATER TRAIL & PARK NETWORK

MASTER PLAN

An exciting collaboration of conservation partners, state agencies and local governments have launched a visionary effort to link a series of public and private riverside parks along a 70-mile stretch of South Carolina's scenic Black River.

EQUITY AND INCLUSION THROUGH ACCESS AND INCREASED RECREATION OPPORTUNITIES

PROTECTION AND INTERPRETATION OF CULTURAL HISTORY

CONSERVATION OF NATURAL RESOURCES AND WILDERNESS ALONG THE CORRIDOR

PRESERVATION OF ECOSYSTEMS FOR RESILIENCY AND FLOODWATER ABSORPTION

RURAL ECONOMIC DEVELOPMENT ENHANCED BY ECO-TOURISM

FIRST NEW STATE PARK IN 15 YEARS

8000ACRES PROTECTED
FROM DEVELOPMENT**70**

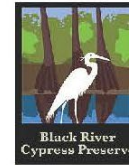
MILES OF RIVER

23PUBLIC ACCESS
POINTS**4**COUNTY &
TOWN PARKS**1**

STATE PARK

Atlantic Ocean

PARTNERS



BLACK RIVER WATER TRAIL & STATE PARK MASTER PLAN STEERING COMMITTEE

David Bishop	The Nature Conservancy
Emma Boyer	Winyah Rivers Alliance
Angela Christian	Georgetown County
Tina Christensen	Winyah Rivers Alliance
Carol Coleman	Waccamaw COG
Janae Davis	American Rivers
Mauretta Doresy	Town of Andrews
Louis Drucker	Black Scenic River Advisory Council
William Freeman	Town of Kingstree
Beth Goodale	Georgetown County
Sel Hemingway	Landowner/community leader
Terry Hurley	South Carolina Parks, Recreation and Tourism
Diana Iriarte	Ducks Unlimited
Bill Lane	National Park Service
Bill Marshall	South Carolina Department of Natural Resources
Frank McClary	Town of Andrews
Paul McCormack	South Carolina Parks, Recreation and Tourism
Erin Pate	Black River Cypress Preserve
Joy Raintree	South Carolina Parks, Recreation and Tourism
Robert Roll	Black River Cypress Preserve
Turquoise Rouse	Williamsburg County
Michaela Sweeney	Open Space Institute
Maria Whitehead	Open Space Institute
Tiffany Wright	Williamsburg County

FUNDERS



GAYLORD & DOROTHY
DONNELLEY FOUNDATION



CONSULTANTS



PROJECT PARTNERS

Black Scenic River Advisory Council
 South Carolina Chapter of the American Society of Landscape Architects
 Waccamaw Indian People
 SouthWings
 John Engels, Green Eyes Arrow
 Thomas Rumens, Maps.video
 Kae Yamane, Open Space Institute
 Neil Jordan, Open Space Institute
 Kelly Proctor, Open Space Institute
 Two Pine State Video Production
 Blueforest Studios
 Lee Brockington, local author and historian
 Tommy Howard, local historian and treasurer of the Chicora Indian Tribe
 Clemson University Landscape Architecture Third Year Studio with Professor Lara Browning

Leadership Team



Rick Huffman, ASLA
Environmental Designer



S. Scott Simmons, AIA
LEED® AP BD+C
Project Manager



Tripp Muldrow, FAICP
Planner/Community
Engagement



Larry Barthelemy, IV, PE
Principal Civil Engineer



P. Michael Ethridge, PLA, ASLA
Lead Landscape Architect



Charles A. Gunning, Assoc. AIA,
LEED® AP BD+C | Project Designer



Ben Muldrow
Graphic Designer



Bruce Todd, PE LEED AP
Civil Engineer Project Manager



Holley Owings, PLA, ASLA
Landscape Architect



Edward T. Zeigler, FAIA
Design Liaison



Chris Cook, PE
Civil Engineer Project Manager



Paddle Launch



Boardwalk



Training Area



Trail



Kayak Storage



Wildlife Viewing



Kayak Slide at Paddle Launch

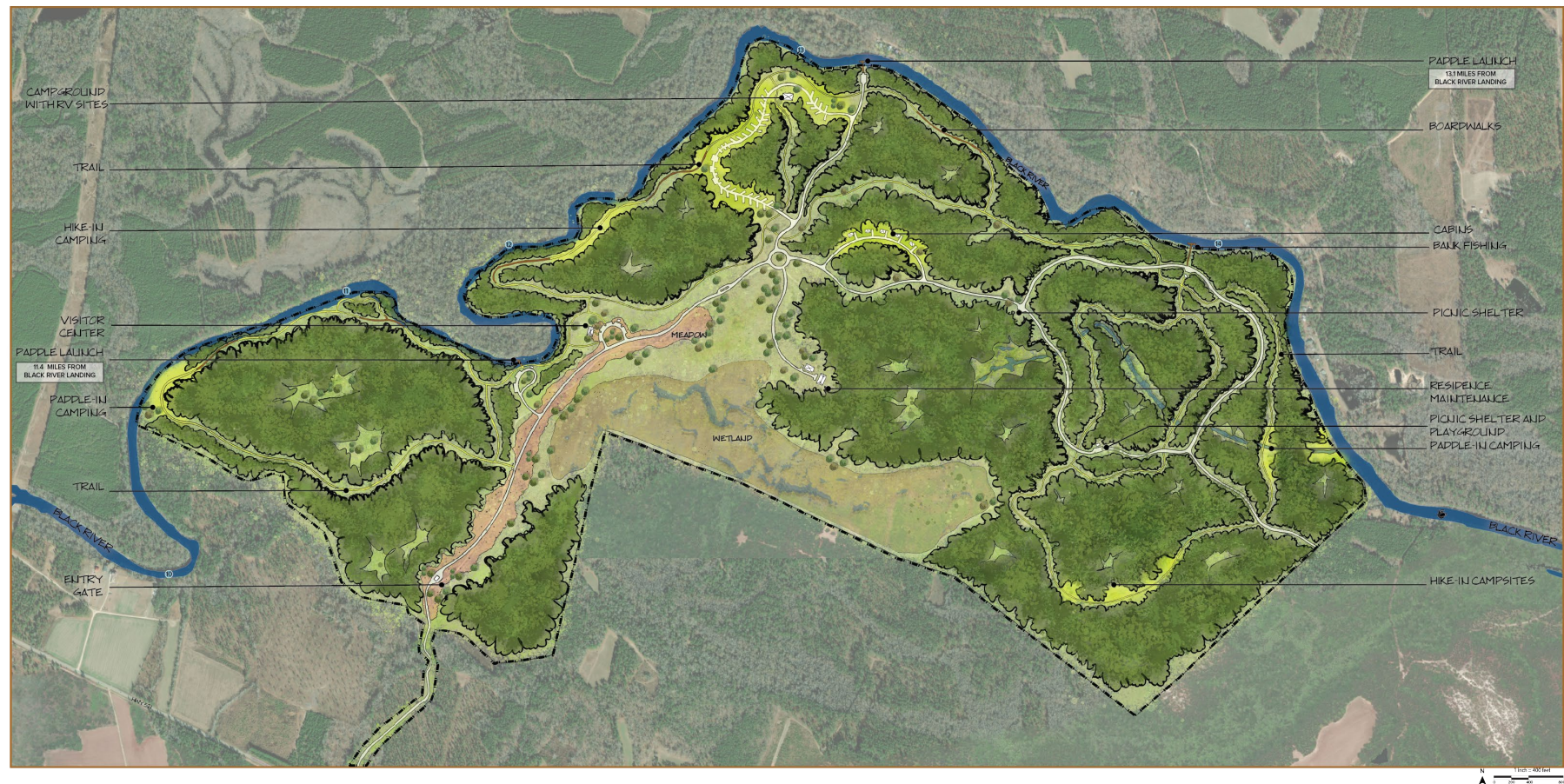


Cultural and Interpretive Signage

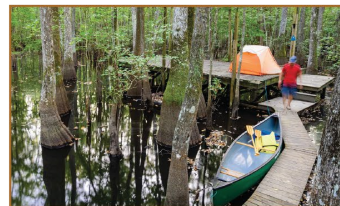
UNIT
ONE

Black River Water Trail & Park Network





Paddle-In Camping



Paddle-In Camping With Platform



Cabin



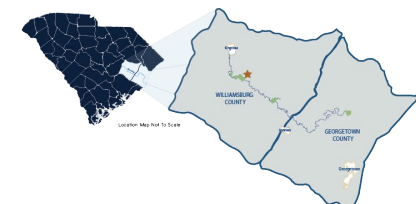
Campground Bathhouse



Visitor Center

UNIT
TWO

Black River Water Trail & Park Network





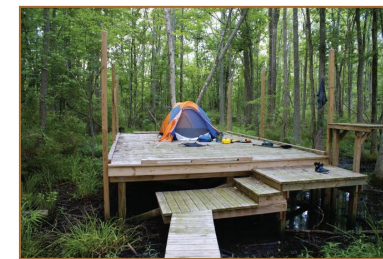
Boardwalk



Treehouse



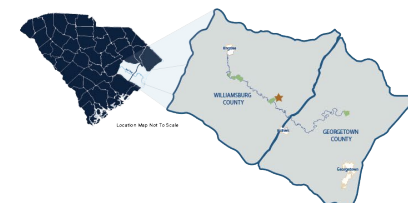
Bank Fishing



Paddle-in Camping

UNIT THREE

Black River Water Trail & Park Network





Camping



Welcome Center



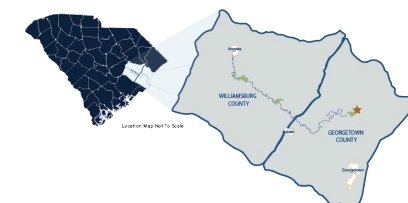
Paddle Launch



Nature Playscape

ROCKY POINT
COMMUNITY
FOREST

Black River Water Trail & Park Network



Wetlands need to stem flooding now conserved along SC coast's Black Mingo Creek

BY BO PETERSEN BOPETE@POSTANDCOURIER.COM
MAR 1, 2019



Black Mingo Creek is not well known but its wetlands are valuable for protecting developed properties along the flood-prone Black River in Williamsburg and Georgetown counties. This property is downstream of a tract recently conserved by the Lord Berkeley Trust. Maria Whitehead/Provided

SUBSCRIBE TODAY FOR \$3.69 / WEEK

During the historic flooding rain in 2015, the Black River rose nearly twice as high as its banks could hold and stayed flooded for two weeks.

Georgetown County avoids the worst from Florence; major flooding in parts of Horry County

BY DAVID PURTELL, CLAYTON STAIRS AT SOUTH DPURTELL@SOUTHSTRANDNEWS.COM
SEP 18, 2018 UPDATED AUG 22, 2020



The Backstory



Black River Landing Plan

KEY:

- A. First Landing Boat Structure
- B. Boat Launch
- C. Restrooms
- D. Restroom Accessibility Facility
- E. Existing Boat Service Area
- F. Amphitheater in Existing concrete Boat Space
- G. Recreation Feature: New Boat Park
- H. New Ramps for the City's Historic Boat Slips
- I. New Boat Access
- J. Access to existing and new customers
- K. Existing Boat Launch Ramp
- L. New Boat or Platform with existing Boat
- M. New Boat
- N. New Boat
- O. New Boat
- P. New Boat
- Q. Existing Boat/Platform
- R. Existing Boat/Platform
- S. Existing Boat/Platform
- T. Existing Boat/Platform
- U. Existing Boat/Platform
- V. Existing Boat/Platform
- W. Existing Boat/Platform
- X. Existing Boat/Platform
- Y. Existing Boat/Platform
- Z. Existing Boat/Platform

The Backstory

North Coast Resilience Project

Andrews – Stormwater Analysis of Town to develop stormwater
(partnership with Town, OSI, and TNC)



Community Efforts

Early Local Community Engagement

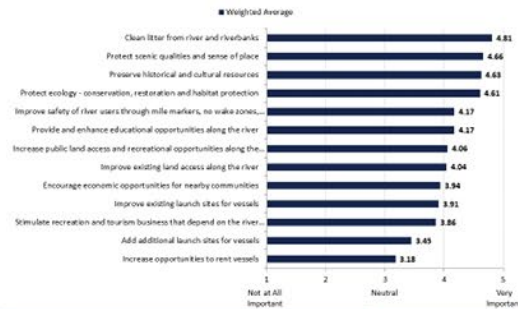
Stormwater management and flood prevention through green infrastructure



Community Efforts

PUBLIC ENGAGEMENT

Within the Black River corridor, what priorities are most important to you?



public
survey
1500
responses

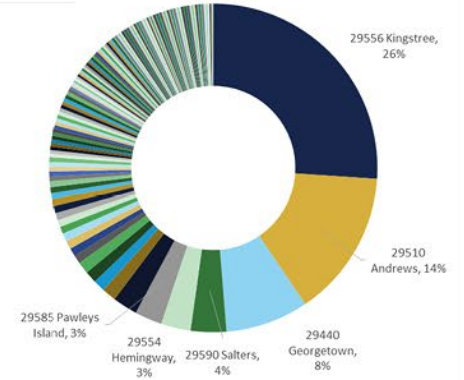
"I was reared here in Kingstree close to the Black River, still own property here and the park will be a great aspect to the residents and visitors of Williamsburg County."



"The Black River is a way of life around here."

165

zip
codes



6 month
engagement
timeline



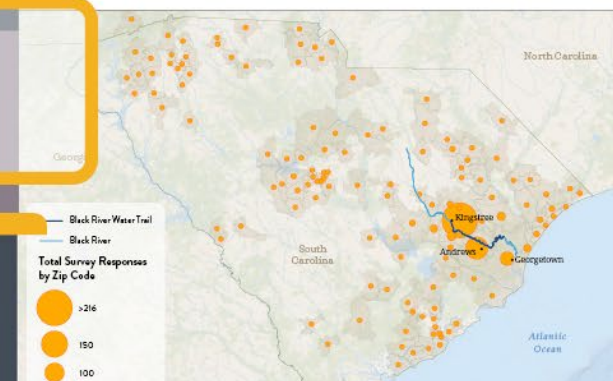
"It is a cultural and historical touchstone especially for descendants of enslaved Africans who worked plantations in the area."

Councilwoman Sue-Ham

June 22, 2021 -
How many of you have actually been on a boat in the black river? Today was my first time. It's an amazing place!!!!
Do you know the history? Do you know that birds migrate from Brazil to the Black River? Do you know about the new state park that's coming to #WilliamsburgCounty?
Have you given your input as to what you'd like to see in the park? Here's the website for the survey:
<https://www.surveymonkey.com/r/SCBlackRiver>
Have you visited the Black River Cypress Preserve? Watch this video and let me know your thoughts, please.
(#Note)- The state park is a state park - it's NOT funded by the county, but it will certainly be here for all to enjoy and to have access to the RIVER.



BLACK RIVER SURVEY RESPONSES BY ZIP CODE



ArcGIS
Storymap

15
steering
committee
meetings



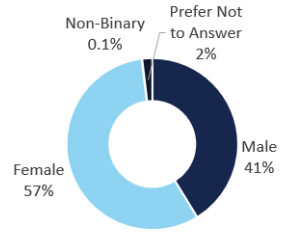
3 public
meetings & webcasts

2

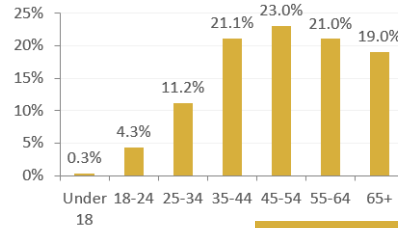


Demographics of Survey Respondents

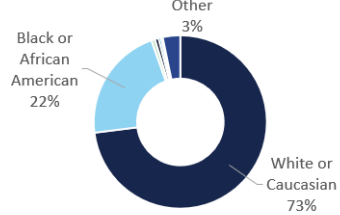
Gender



Age



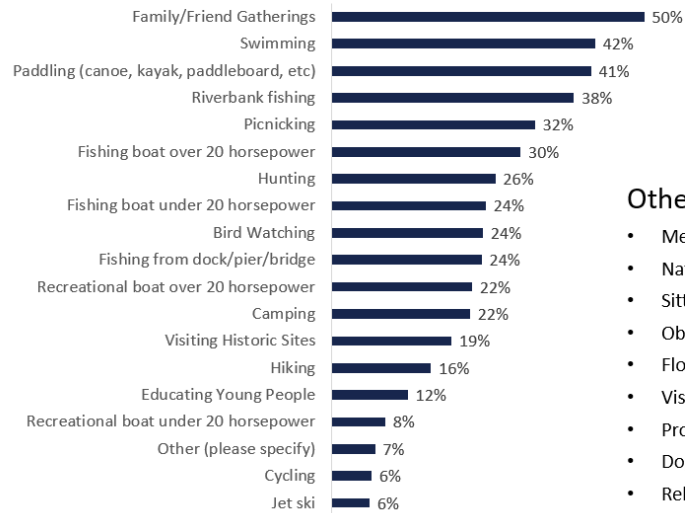
Race/Ethnicity



Less than 1%:

- Asian or Pacific Islander
- Hispanic or Latino
- Native American or Alaska
- Multiracial or Biracial

In what ways do you currently recreate on the Black River Corridor?



Other commen

- Meditation
- Nature photograph
- Sitting in nature
- Observing wildlife
- Floating/tubing
- Visiting park
- Property owner
- Dog walking
- Relaxing

Sample Comments:

"Peaceful beauty, tranquility, hunting and gathering; a primary food source."

"A way of life."

"My family got Baptized in Black River."

"Access to wildlife and nice scenery. A chance to make memories with friends and family."

"This area means home to us, our children and grandchildren! We have found many pottery shards and would like to learn more about them."

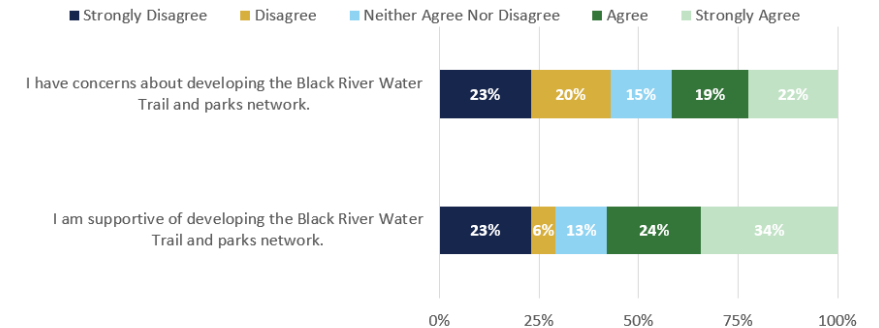
As a local resident or property owner, what does the Black River mean to you?

"It is a cultural and historical touchstone."

"Black River is a way of life around here."

As a property owner along the Black River corridor (207 respondents)...

- 58% are supportive of developing the Black River Water Trail and Parks Network
- 41% have concerns



Community outreach



COVID

DESIGN CHARRETTE

In September of 2021, a design charrette was convened to create site designs for three of the four project sites. Site tours, river excursions and analysis materials were provided to the charrette teams.

2 Days

3 Sites

6 Teams

40+ Participants

- » Williamsburg County
- » Georgetown County
- » Lowcountry Council Of Governments
- » Town Of Andrews
- » Town Of Kingstree
- » South Carolina Chapter Of The American Society Of Landscape Architects
 - **12** Professional Landscape Architects
- » University Students
- » National Park Service



The Post and Courier

April 4, 2021

SC's ambitious Black River park project will provide public access to waterway



Dale Threatt-Taylor of The Nature Conservancy on a boat Tour of the Black River on March 16, 2021, near Andrews.

By Adam Parker

Some rivers are unique. They start and end within a single region. They meander through cypress swamps. Their waters turn a deep copper-brown because of the tannins drawn from old-growth wetland forests.

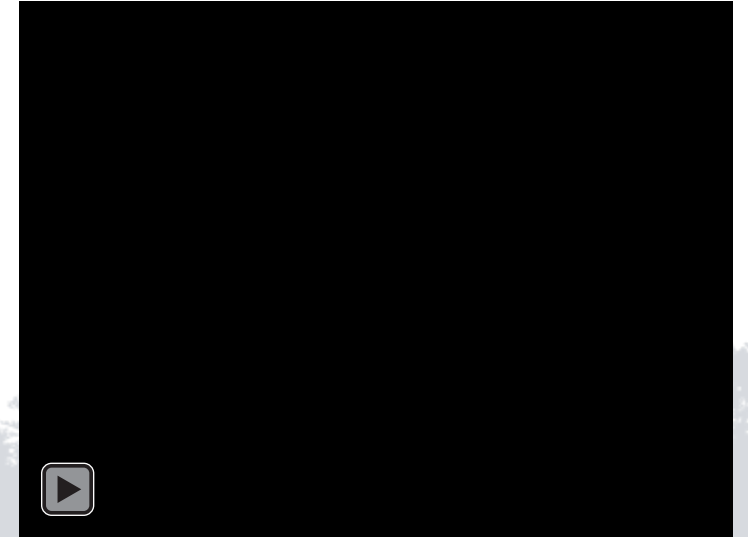
The Black River of South Carolina is one such river. It roves through rural tracts of loblolly pines used by the timber industry. It crowns at Kingstree then widens as it approaches Andrews.

It is a place full of life, color and beauty, of sights and sounds most of us know little about. We have turned our backs to it. It runs behind the objects of our civilization —

the farms and towns and warehouses and highways. It runs within the forbidding woods. It runs quietly, mostly out of reach.

But that could change soon.
Black River State Park

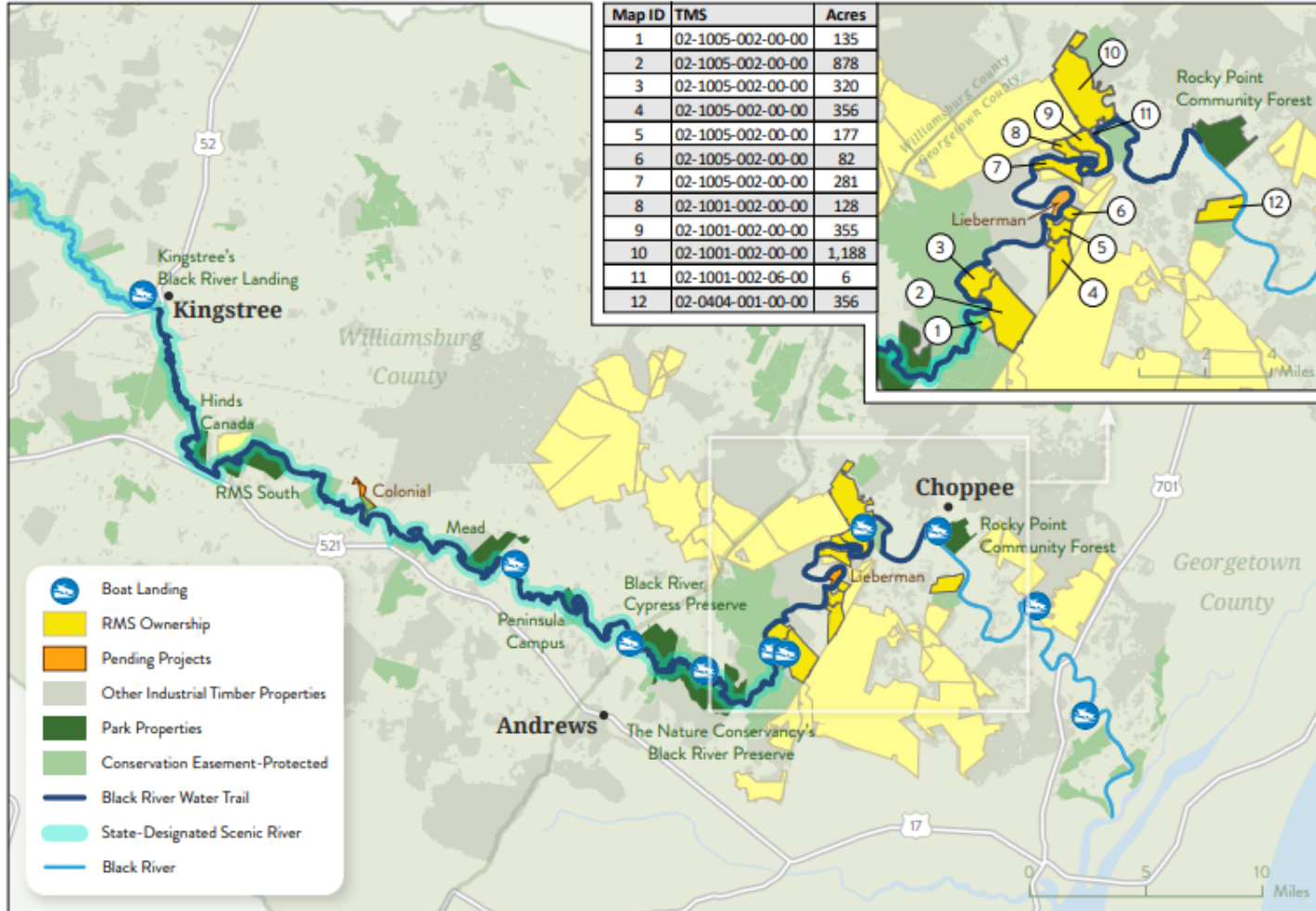
An ambitious collaboration between conservation groups, municipal governments, private landowners, local residents and the state eventually will result in South Carolina's first state park in more than 20 years. The project is one of the most sweeping and inclusive efforts yet undertaken in South Carolina to conserve land for public use.



Continued Outreach

Black River Water Trail and Park Network

Williamsburg and Georgetown Counties, SC | November 2021



The Post and Courier

postandcourier.com

June 16, 2022

Black River State Park project flowing along

Creation of first state park in nearly 20 years now closer to reality with addition of properties on waterway, master plan



A winding segment of the Black River, which starts in Bishopville, runs by Kingstree and Andrews, and empties at Georgetown into Winyah Bay. The Nature Conservancy/Provided

By Adam Parker

The Black River State Park project has taken a significant leap forward with the procurement of three additional properties, the development of a master plan and redoubled efforts to foster economic development in Williamsburg and Georgetown counties.

of Parks, Recreation and Tourism. The organization transferred its first parcel to the state Parks Department in April 2021.

The Nature Conservancy, another of the park project's major collaborators, will transfer the Sims Reach property, 143 acres, to the Parks

The project continues to grow



The Post and Courier urges Congressional, state, and local lawmakers to fund the OSI-led Black River Initiative, the exciting 70-mile water trail and paddling network through South Carolina's Georgetown and Williamsburg counties: https://www.postandcourier.com/.../article_a7b8f244-bcee...

OSI thanks our partners in the initiative, Arnett Muldrow & Associates, South Carolina Chapter American Society of Landscape Architects, Black River Cypress Preserve, Blueforest Studios, South Carolina Ducks Unlimited, Earth Design Inc, Georgetown County, S.C., Rivers, Trails and Conservation Assistance, Rocky Point Community Forest, SC Conservation Bank, South Carolina State Parks, The Nature Conservancy South Carolina, Town of Andrews, Andrews South Carolina, Town of Kingstree, Winyah Rivers Alliance, and more!



POSTANDCOURIER.COM

Editorial: Help make dream of Black River water trail and park network a reality

Governments don't always work well together or follow through on their more ambitious plan...

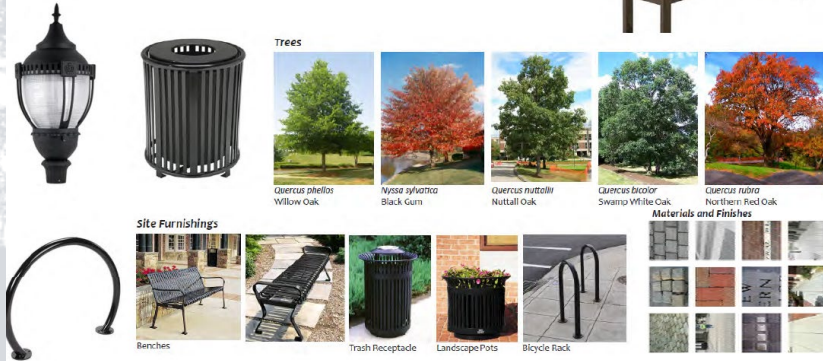
Editorial: Help make dream of Black River water trail and park network a reality

BY THE EDITORIAL STAFF
MAR 12, 2023



Funding

DESIGN PALETTE



Work in Progress.....



Town of Andrews Visioning Plan



”

That land as a community is
the basic concept of ecology,
but that land is to be loved
and respected is an extension
of ethics.

- Leopold

Thank you