



# Welcome to Expanding Access to Nature for the Mobility Impaired

Melanie Dunn

Assistant Director

Aimee Copeland Foundation

[melanie@aimeecopeland.com](mailto:melanie@aimeecopeland.com)

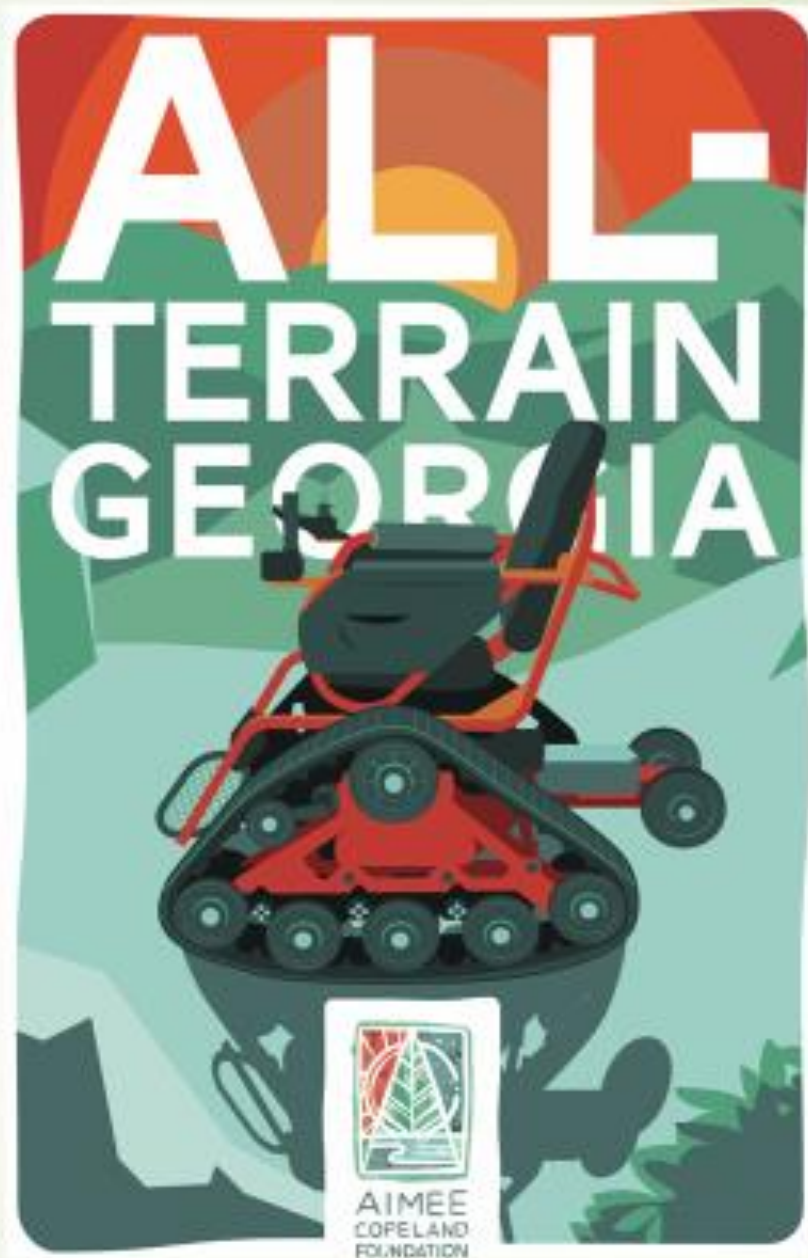
770-866-2815

---





Creating Inclusion in Georgia's Parks



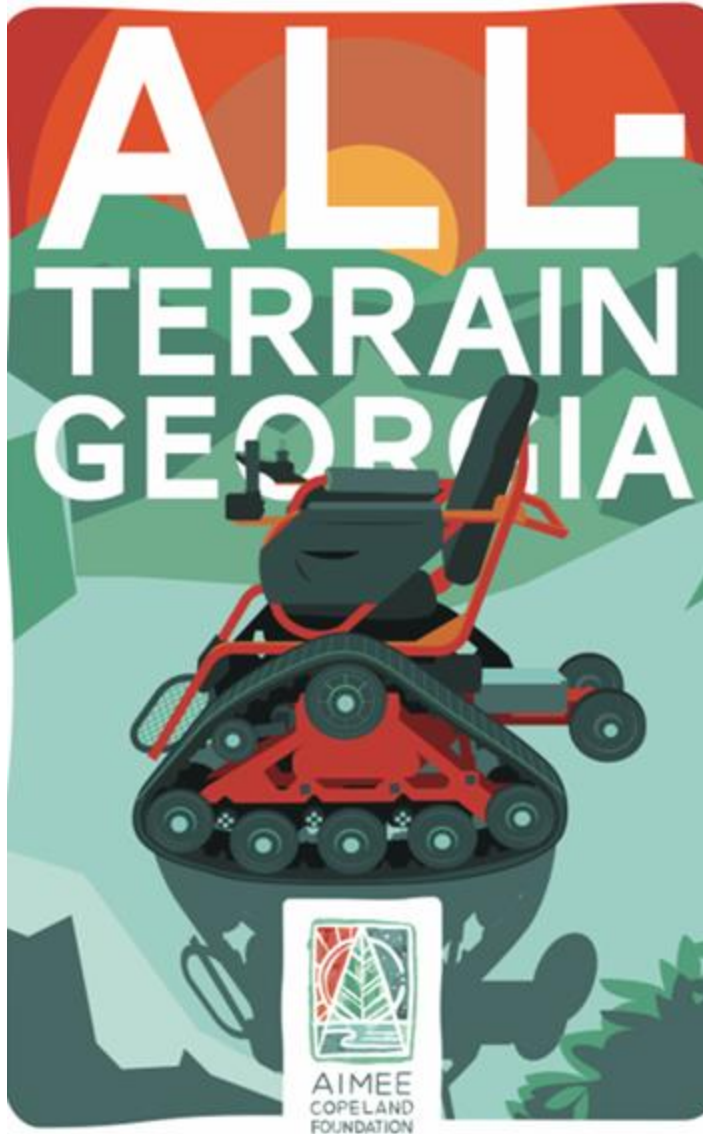
**The Aimee Copeland Foundation believes that mind, body, and soul are one, that the magic of the outdoors can transform physical, mental and spiritual health, that we are all imperfectly perfect, and that everyone deserves the chance to play, contribute and thrive.**

**ACF puts those inclusive beliefs into intentional, multifaceted action, helping people of all abilities shape meaningful, purposeful lives and find peace, strength and fulfillment beyond what they might have imagined.**

**Led by Aimee Copeland, a licensed clinical social worker with a background in eco-psychology, a quadruple amputee and a necrotizing fasciitis survivor, ACF inspires hope through action, builds community through inclusivity, provides healing through relationships, fights stigma through education, and breaks down barriers through compassion and humor.**







# What makes All Terrain Georgia Special

**We specialize in safety first and foremost!**

- 1. Safety of our participants**

**Everyone must take a safety course and pass a safety quiz.**

- 2. Safety for the environment**

**Our All Terrain Chairs leave ZERO emissions and do not disturb the natural habitats that they move through.**

# Specifications of the Actiontrack All Terrain Chair

- 37 inches or less in width
- Having a dry weight of approximately 400 pounds
- 43 inches in height and 52.5 inches in Length
- Has Zero Emissions and is Electric.
- Designed to propel one individual
- Weight limit up to 300 pounds
- Dual Port USB Charger
- Cushioned Arm rests
- Easy for transfers, the arms easily lift up
- Four-point harness for safety
- There are additions that can be made to the chairs to fit your particular needs, such as hunting props, fishing rod holders, rear rack for carrying gear, and many more.

## Buddy Requirements

**Each qualified individual using an ATC must be accompanied by an individual in good physical condition who will be referred to as their “Buddy.”**

**The Buddy will also be required to take the safety class and quiz.**



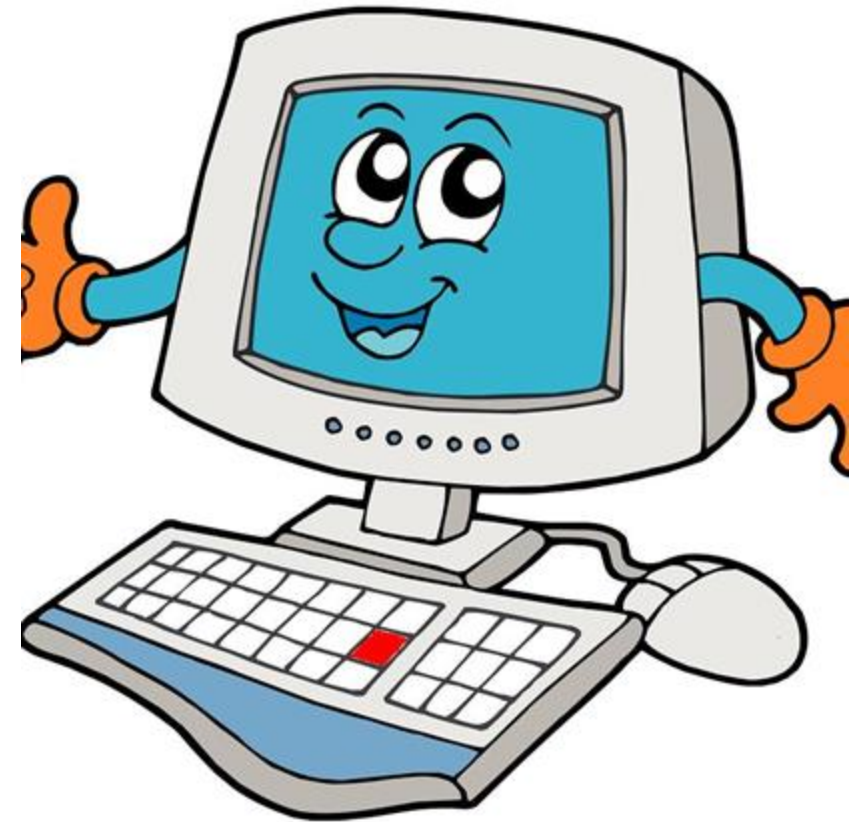




# Pre-Certification Process

**Individuals are vetted through the pre-approval process by ACF before they can make a reservation to use an ATC**

**The user must submit a proof of disability and a current state-issued photo ID or driver's license. No one under the age of 16 is currently allowed to reserve an ATC.**





# Get certified.



## Eligible Disabilities

We are now accepting requests for certification from anyone with a disabled parking tag or placard. If you do not have one but believe you are eligible, please contact the ACF office for consideration.

Disabilities eligible for certification through the All Terrain Georgia program include these permanent disabilities: Cerebral Palsy, Muscular Dystrophy, Spinal Cord Injuries and Lower Limb Amputations. Contact the ACF office if you have a disability that falls outside of these outlined areas for consideration.

## Buddy Requirement

- If you do not have a Buddy or Companion with you who is over the age of 18, you are not eligible to use the ATC on the particular day that you have reserved it for use.



## Courtesy, Ethics and Environment

- Share the trail – give non-motorized trail users the right of way.
- Stay on designated trails – riding off the trail damages wildlife habitat and contributes to erosion.



## All Terrain Georgia Exam

Multiple Choice

Email \*

Valid email

This form is collecting emails. [Change settings](#)

1. ATC stands for?



Multiple choice

- ☐ Action Track Chair
- ☐ Action Terrain Chair
- ☐ All Terrain Car
- ☐ None of the Above
- ☐ Add option or [add "Other"](#)



☒ Answer key (4 points)



Required



2. The Action Track Chair is battery controlled and moved by

☐ a joystick



- **An email will be sent** from ACF to the predetermined personnel 48 hours in advance of a reservation. The email will include the name of the individual who is approved to check out the ATC as well as their Buddy's information. The individual's contact information and arrival time will be sent along for reference.
- **Weather is checked 24 hours in advance** of reservations and if there is a 50% or greater chance of precipitation or inclement weather the reservation will be canceled, as ATC's controls cannot get wet.





[About](#) [Certification](#) [Locations](#) [Reservations](#) [Volunteer](#) [Contact](#)

[Reserve Your Chair Today](#)

## Locations

[Reservations](#)



### CLOUDLAND CANYON

**Check out:** Interpretive Center

**Check in/Check out Hours:** 9 am to 5 pm

[MAP](#)



### FORT YARGO

**Check out:** Welcome Center

**Check in/Check out Hours:** 8 am to 5 pm

[MAP](#)



# What I have Learned So Far...

1. Life is a Balancing Act.
2. It takes a lot of patience.
3. Helping people is wonderful.
4. Being in nature is super fulfilling.





All Terrain Georgia is doing wonderful things for people with mobility impairments in Georgia, but we at Aimee Copeland Foundation have a vision that is wide open and realize that this model can be taken Nation wide and will do whatever we can to help whomever we can to implement the program in their own parks! Everyone deserves a chance to play!







**Our All Terrain Georgia Users  
Love being outside and enjoying  
our beautiful state parks and  
wildlife areas!**





# Ms. Lindsay Wilbanks and her All Terrain Georgia Story





**BETA TESTERS-**

Checking out the functionality of the chairs and exploring the great outdoors.

**Red Top Mountain was our first time testing out the chairs. The feeling of being able to be in outside together away from all the pavement and worries of the day to day was amazing!**





Cumberland Gap-

This was our 2nd adventure in the All  
Terrain Trackchair



# NEWMAN WETLANDS CENTER

Creating accessible environmental education opportunities in Clayton County



# Accessibility Evaluation

- **Birdability & Access Birding**
  - Physical site evaluations
  - Program evaluations
- **Visitor Surveys**
- **Visitor Interviews**







# Communications & Program Changes

**01**

# Provide accessibility information on website & in Learning Center

**02**

\* Add accessibility options to website

**03**

# Update contrast, font size, & readability of educational materials

**04**

! Invest in general disability etiquette training for staff & volunteers

**05**

# Offer adaptive equipment as a regular option (ex: monoculars with binoculars)

\* Completed  
# Ongoing  
! Coming soon





## Communications & Program Changes

06

# Update programming & signage based on language justice principles

07

# Offer self-guided audio experiences (Story App)

08

# Enroll staff in ASL courses

09

# Offer visitors various ways of learning (tactile signage, hands-on, listening, etc.)

10

# Update how we address students, especially those who are neurodivergent

\* Completed  
# Ongoing  
! Coming soon



# Learning Center Changes

11

# Update site map with high contrast & symbols instead of colors to differentiate between trails

12

# Create a sensory safe space for guests who become overstimulated

13

\* Move restroom bins & dispensers closer to toilets

14

! Add a lower mirror in restrooms

\* Completed  
# Ongoing  
! Coming soon





# Trail Changes

15

# Add trail signs at each trail intersection with substrate type, incline %, length, and shade/sun

16

! Lower & improve angle of interpretive signage

17

! Update current benches to be ADA required heights & add benches on side trails

18

! Change railing height/size to be suitable for wheelchair users, children, etc.

19

! Update trails to ensure adequate drainage to minimize ruts

20

! Widen boardwalk to ensure ASL users can communicate comfortably

\* Completed  
# Ongoing  
! Coming soon





# Discussion

# Contact Info

Danielle Bunch

770-210-1332

[danielle.bunch@ccwa.us](mailto:danielle.bunch@ccwa.us)

[www.newmanwetlandscenter.com](http://www.newmanwetlandscenter.com)

