

# Trees Atlanta Programs

- NeighborWoods
- Urban Trees
- Forest Restoration
- BeltLine
- Education



# About Trees Atlanta's Forest Restoration Program

- Program funded through fundraising efforts, contracts, grants, and donations
- Currently, Trees Atlanta has a contract with COA parks department granting permission to conduct restoration work, but funding is not included
- Long term presence in particular nature preserves/parks
  - Atlanta Memorial Park
  - Brownwood Park
  - Cascade Springs Nature Preserve
  - Chosewood Park
  - Connally Nature Park (East Point)
  - Frazer Forest
  - Freedom Park
  - Gilliam Park
  - Kirkwood Urban Forest
  - Lionel Hampton - Beecher Preserve
  - Morningside Nature Preserve
  - Oakhurst Greenspace (Decatur)
  - Underwood Hills Park



# Available Services

- Professional invasive removal
- Volunteer invasive removal projects
- Native replanting post invasive removal
- Site information and invasive mapping
- Vegetative management plans
- Invasive workshops
- Forest Stewardship class
- Educational Resources



# Site Information

- Work zones based on trails, hydrology, and ecotype
- Dividing up the space makes it easier to establish goals



# Invasive Mapping

- Mapping invasives by plant type and density makes it easy to prioritize and track progress

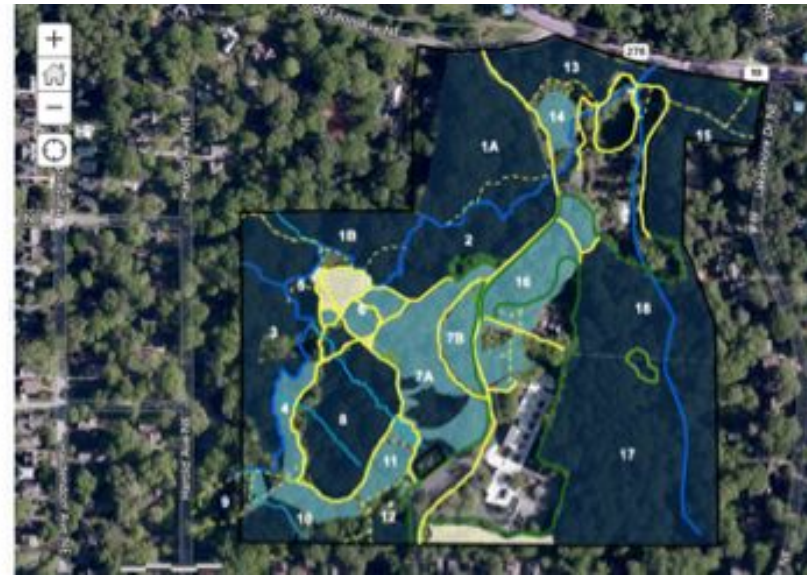


Table 1: Infestation acreage of invasive tree/shrub species for each density type

Species	Total Extent (acres)	High Density Area (acres)	Medium Density Area (acres)	Low Density Area (acres)
<i>Prunus caroliniana</i> (Carolina Cherry Laurel)	29.2	19.9	5.0	4.3
<i>Mahonia bealei</i> (Leatherleaf Mahonia)	29.0	8.7	7.2	13.1
<i>Ligustrum sinense</i> (Chinese Privet)	27.2	9.1	3.5	14.7
<i>Magnolia grandiflora</i> (Southern Magnolia)	24.1	5.5	8.6	10.0
<i>Elaeagnus</i> spp. (Silverthorn/Autumn Olive)	21.1	9.4	5.6	6.1
<i>Ilex coccinea</i> (Chinese Holly)	20.0	4.9	1.0	14.0
<i>Lonicera maackii</i> (Amur Bush Honeysuckle)	18.0	2.8	0.4	14.7
<i>Ligustrum lucidum</i> (Glossy Privet)	14.7	3.9	3.5	7.4
<i>Erionotus alatus</i> (Winged Burning Bush)	11.6	3.3	4.8	3.6
<i>Nandina domestica</i> (Sacred Bamboo)	10.9	2.8	3.9	4.1
<i>Ilex crenata</i> (Japanese Holly)	10.2	0.1	0.2	9.9
<i>Rosa multiflora</i> (Multiflora Rose)	5.2	0.0	0.0	5.2
<i>Hibiscus syriacus</i> (Rose of Sharon)	3.7	0.0	1.6	2.1
<i>Albizia julibrissis</i> (Mimosa Tree)	2.7	0.0	0.0	2.7
<i>Ailanthus altissima</i> (Tree of Heaven)	2.4	0.0	2.4	0.0
<i>Pyrus calleryana</i> (Callery Pear)	2.0	0.0	0.0	2.0
<i>Broussonetia papyrifera</i> (Paper Mulberry)	0.2	0.0	0.0	0.2



# Vegetative Management Plans

- Site information & zone descriptions
- Invasive plant maps
- Best management practices for invasive mitigation
- Replanting strategies
- Recommendations by year, usually a 5 year plan
- Estimated volunteer hours required & costs for professional control if recommended



# Invasive Workshop (3-hour field class)

- Objective is to empower the community group to take on invasive plant removal projects in their local greenspace and educate individuals about invasive plants present in their own yards and landscapes
- Targeted identification of invasive plants for a specific site and appropriate time of year to approach treatment
- Efficient removal techniques (physical, mechanical, and chemical) of these invasive plants, with the primary focus on the plants that cause the biggest nuisance in forested spaces



# Forest Stewardship Class (4 3-hour classes)

- Class 1 - Identifying Native & Invasive Plant Species: Anatomy, Phytogeography, and Phenology
- Class 2 - Invasive Species Removal Techniques and Methods: The Why and How
- Class 3 - Replanting with Natives: Understanding Ecological Interactions while Developing a Reforestation Plan
- Class 4 - Becoming a Forest Steward: Volunteer Opportunities at Trees Atlanta and Resources to Help Serve Your Community

