



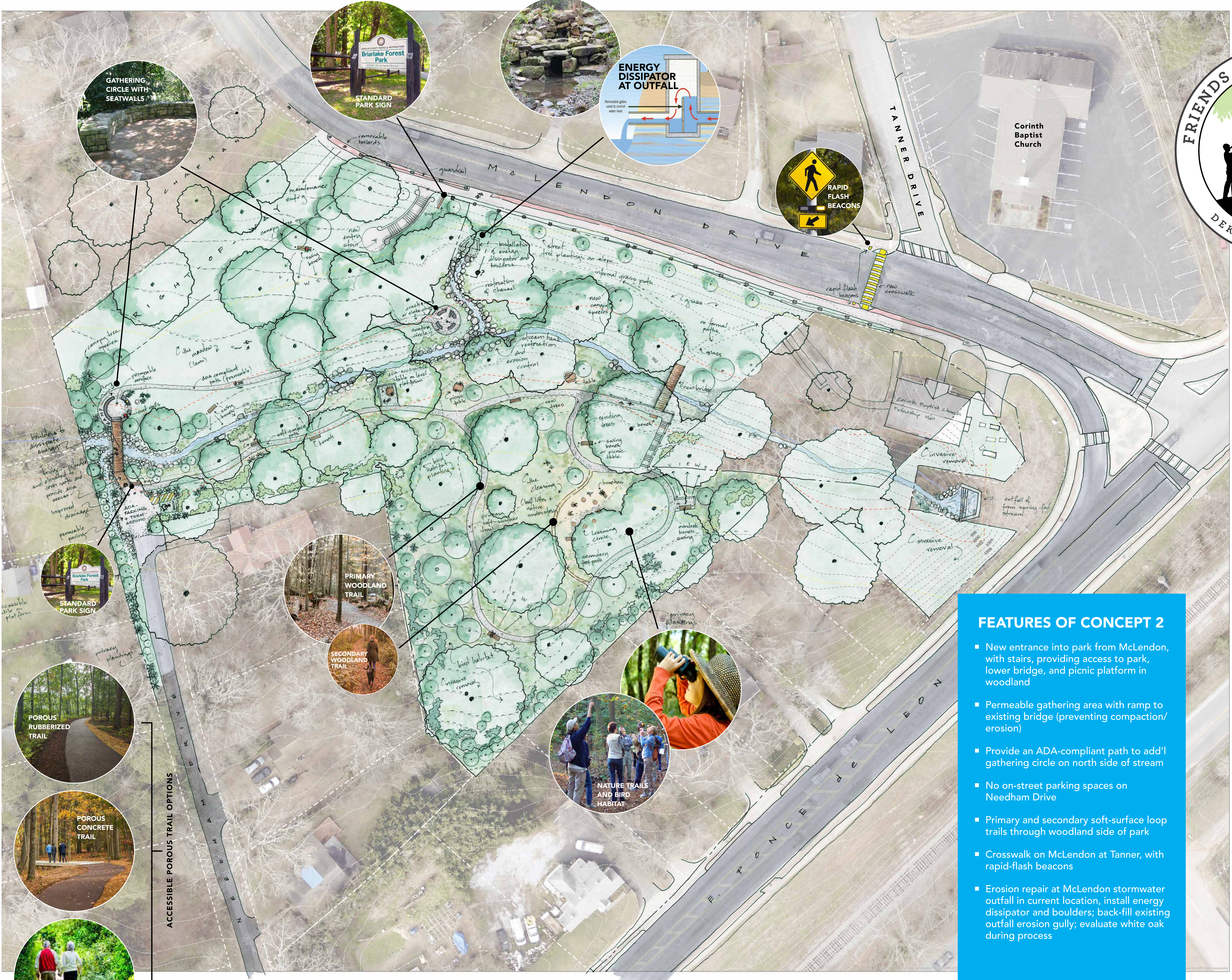
# PRELIMINARY VISION PLAN Concept 2



Prepared and facilitated by  
Park Pride, April 18, 2019

## FEATURES OF CONCEPT 2

- New entrance into park from McLendon, with stairs, providing access to park, lower bridge, and picnic platform in woodland
- Permeable gathering area with ramp to existing bridge (preventing compaction/erosion)
- Provide an ADA-compliant path to add'l gathering circle on north side of stream
- No on-street parking spaces on Needham Drive
- Primary and secondary soft-surface loop trails through woodland side of park
- Crosswalk on McLendon at Tanner, with rapid-flash beacons
- Erosion repair at McLendon stormwater outfall in current location, install energy dissipator and boulders; back-fill existing outfall erosion gully; evaluate white oak during process



0 10 20 40 60 80 Feet

