



# Preliminary Plans

Visioning Meeting 3

*for the greener good*



.....  
Needham Park

Special  
Projects

Friends  
of Park  
Program

Fiscal  
Partners

Volunteer  
Program

Grant  
Programs

Park  
Visioning

Community  
Gardens

Parks &  
Greenspace  
Conference

Adopt-a-Park

Adopt-the-  
Atlanta-  
BeltLine

Advocacy &  
Education

**park pride**

*To engage communities to  
activate the power of parks*



# What is Visioning?

- Record of community priorities for a public park
- Conceptual plan, not fully engineered
- Advocacy and fundraising tool for the community
- NOT automatically funded
- NO weight of law, but nothing precludes
- NOT a promise NOR a mandate



## Visioning process so far

- Visioning services awarded to two DeKalb County parks per year by application and recommendation
- Steering committee of community members assembled
- Opinion survey distributed (closing tonight)
- Public Meeting 1 – Big Ideas (01/26/2019)
- Public Meeting 2 – Design Workshop (3/2/2019)



# Today

**1** Review the **preliminary plans** and decide which features you like/dislike

Refer to the survey results, maps, and other resources

**2**

**3** Record your thoughts on the feedback worksheet





Needham Park

# Feedback Forms

See Concept 1 on opposite side

## FEEDBACK: CONCEPT 1

See Concept 2 on opposite side

OVERALL PREFERENCE  
If you prefer this concept overall, please check below  
Concept 1

Features

Check the features you prefer, see alternatives on opposite side; write-in comments

Concept 1

- ☐ New entrance into park from McLendon, with lower bridge, and picnic area in woodland
- ☐ ADA-compliant ramp, providing access to park, end of existing bridge, providing a gathering spot, seating and ADA-compliant path to McLendon Drive
- ☐ On-street parking spaces on Needham Drive
- ☐ Single soft-surface loop trail through woodland side of park
- ☐ Crosswalk at new entrance on McLendon, with rapid-flash beacons
- ☐ Erosion repair at McLendon stormwater outfall; divert outfall in pipe to downstream location; install energy dissipater and boulders; evaluate white oak during process
- ☐ Backfill current outfall erosion gully to allow for walking path to cross this area

Included in both

- ☐ Benches, swing benches, and picnic tables throughout park providing a variety of places to sit
- ☐ Learning Circle in woodland for community gatherings and field trips from McLendon ES
- ☐ Streambank stabilization + erosion control
- ☐ Restoration and enhancement of native habitat through invasive plant removal
- ☐ Planting new future canopy trees throughout to maintain forest canopy
- ☐ Upgrade/extend existing bridge to provide safer access and protect streambank/tree roots
- ☐ Improved access via ADA-compliant parking space and turn-around (with permeable paving) at base of Needham Drive
- ☐ New bridge and soft-surface walking trails through woodland for improved circulation in park
- ☐ ADA-compliant + permeable surfaces on trails in meadow and woodlands to improve access
- ☐ Shift guardrail to street side of sidewalk on McLendon curve for safer pedestrian access
- ☐ New park signs at McLendon and Needham Drive entrances to improve awareness of the park

See Concept 2 on opposite side

## FEEDBACK: CONCEPT 2

See Concept 1 on opposite side

OVERALL PREFERENCE  
If you prefer this concept overall, please check below  
Concept 2

Included in both

- ☐ Benches, swing benches, and picnic tables throughout park providing a variety of places to sit
- ☐ Learning Circle in woodland for community gatherings and field trips from McLendon ES
- ☐ Streambank stabilization + erosion control
- ☐ Restoration and enhancement of native habitat through invasive plant removal
- ☐ Planting new future canopy trees throughout to maintain forest canopy
- ☐ Upgrade/extend existing bridge to provide safer access and protect streambank/tree roots
- ☐ Improved access via ADA-compliant parking space and turn-around (with permeable paving) at base of Needham Drive
- ☐ Improved drainage and clearing of overgrowth on Needham Drive, to provide safe access & visibility
- ☐ New bridge and soft-surface walking trails through woodland for improved circulation in park
- ☐ ADA-compliant + permeable surfaces on trails in meadow and woodlands to improve access
- ☐ Shift guardrail to street side of sidewalk on McLendon curve for safer pedestrian access
- ☐ New park signs at McLendon and Needham Drive entrances to improve awareness of the park

Name \_\_\_\_\_

Comments \_\_\_\_\_

Email \_\_\_\_\_

Facilitated by Park Pride

DEKALB COUNTY, GA

2019 ■ parkpride.org

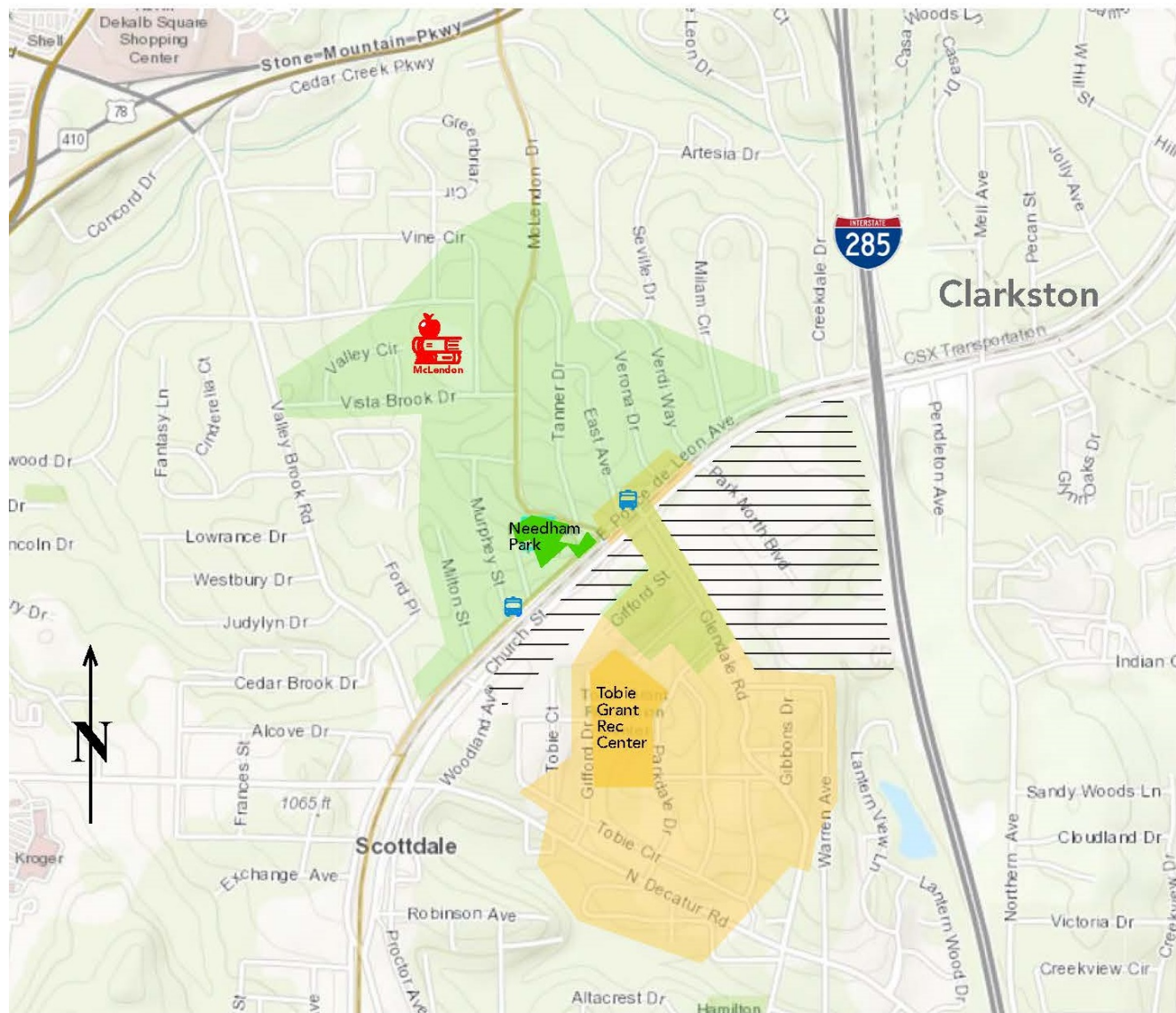




Needham Park

# The 10-minute walk

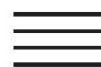
2019 ■ [parkpride.org](http://parkpride.org)



Needham Park



10-min walk from  
Needham Park



Industrial Zone



10-min walk from  
Tobie Grant Rec Ctr



School



MARTA Stop



# Guiding Principles

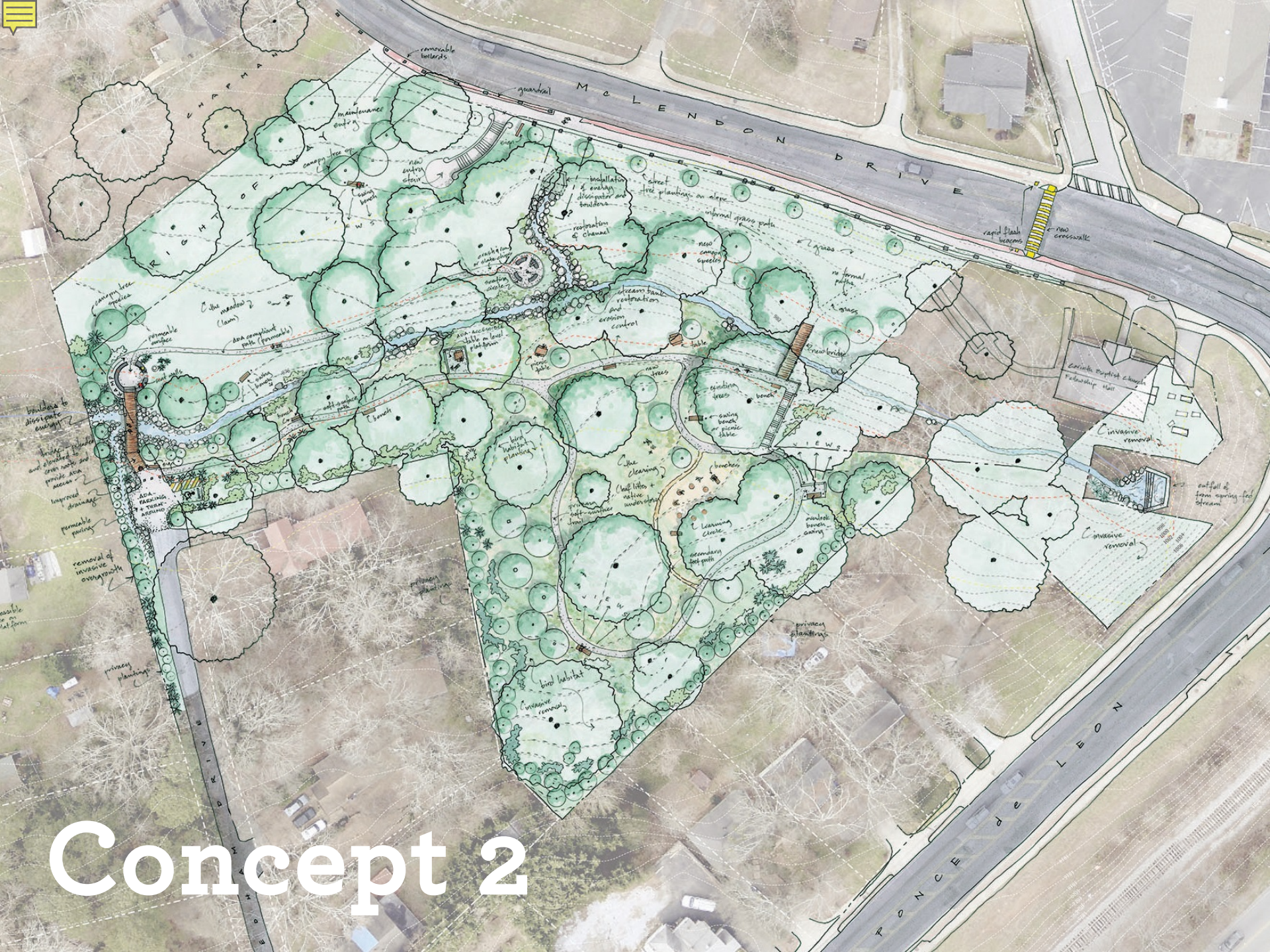
- Protect, preserve, and enhance Needham Park's tree canopy, stream system and natural habitat
- **Create opportunities in Needham Park to build community**
- Provide for safe access to, circulation through, and community awareness of Needham Park
- **Create a peaceful, safe, and educational place to enjoy nature**





# Concept 1





# Concept 2





## Upcoming Meetings

**Saturday, April 20, 2019, 10:30am**  
Easter Egg Hunt!

**Saturday, June 15, 2019**  
**11am – 12 pm**  
Vision Concept Presentation,  
Needham Park  
Corinth Fellowship Hall

**Ongoing –**  
Get involved with Friends of Needham Park



# Questions? Concerns?

Teri Nye, project manager  
[teri@parkpride.org](mailto:teri@parkpride.org)  
404-546-7987

Kayla Altland, community building  
[kayla@parkpride.org](mailto:kayla@parkpride.org)  
404-371-2188